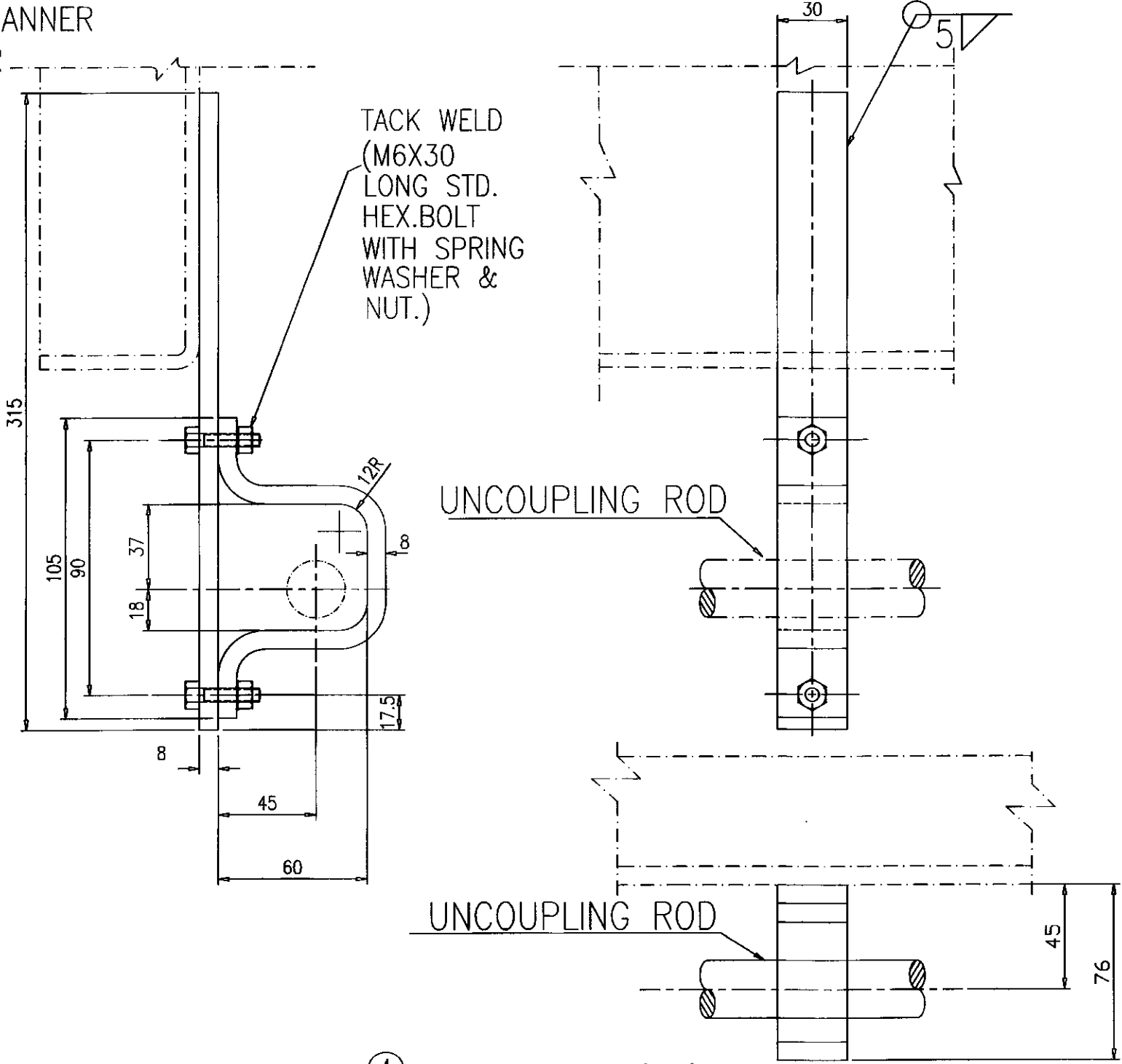


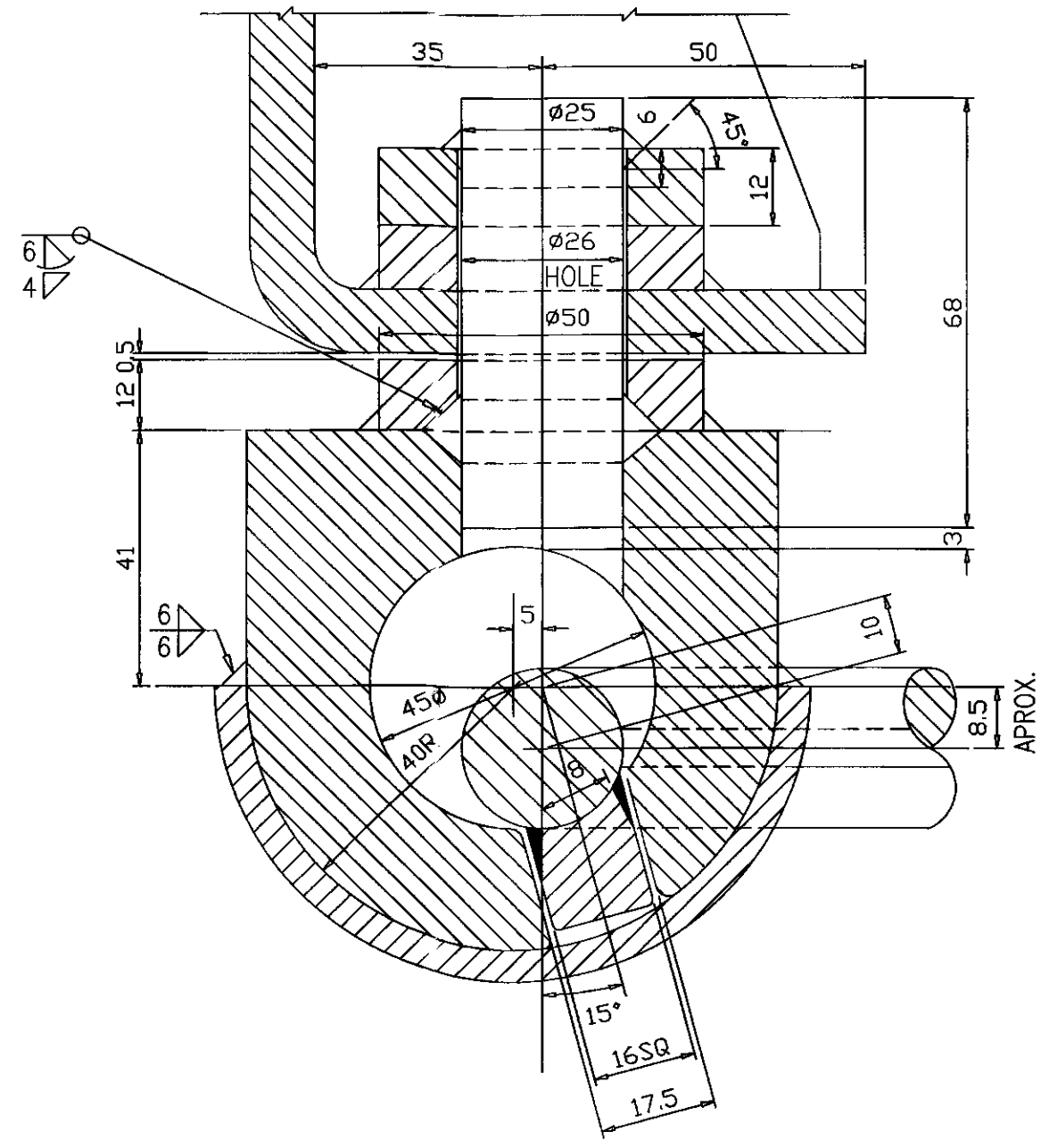
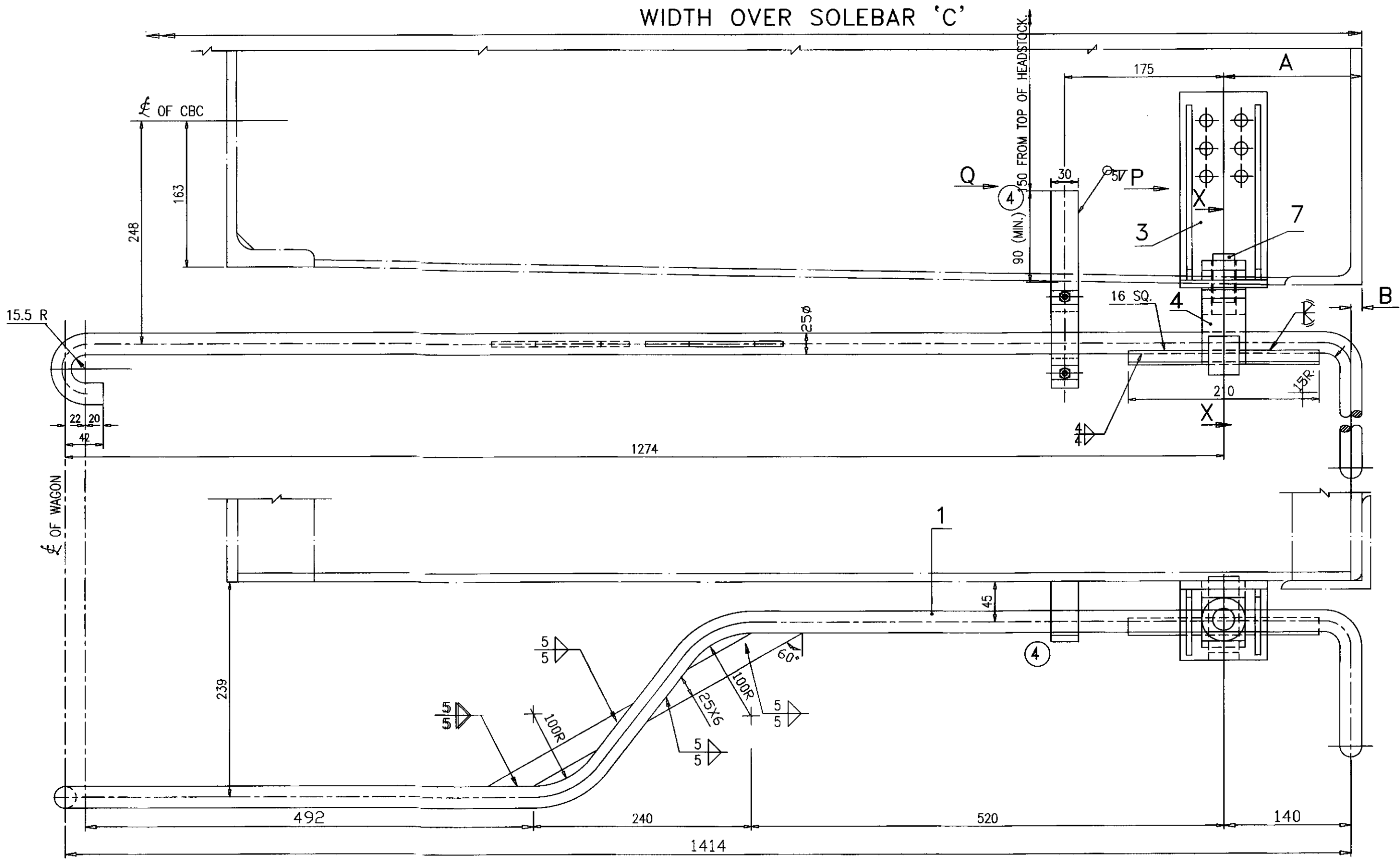
⑧ FITMENT OF ITEM 8

NOTE: SAFETY LOCK SHALL BE WELDED ON BEARING PIECE IN SUCH A MANNER THAT SEMI CIRCLE SLOT IN SAFETY LOCK PLATE REST FULLY OVER UNCOUPLING ROD HANDLE.

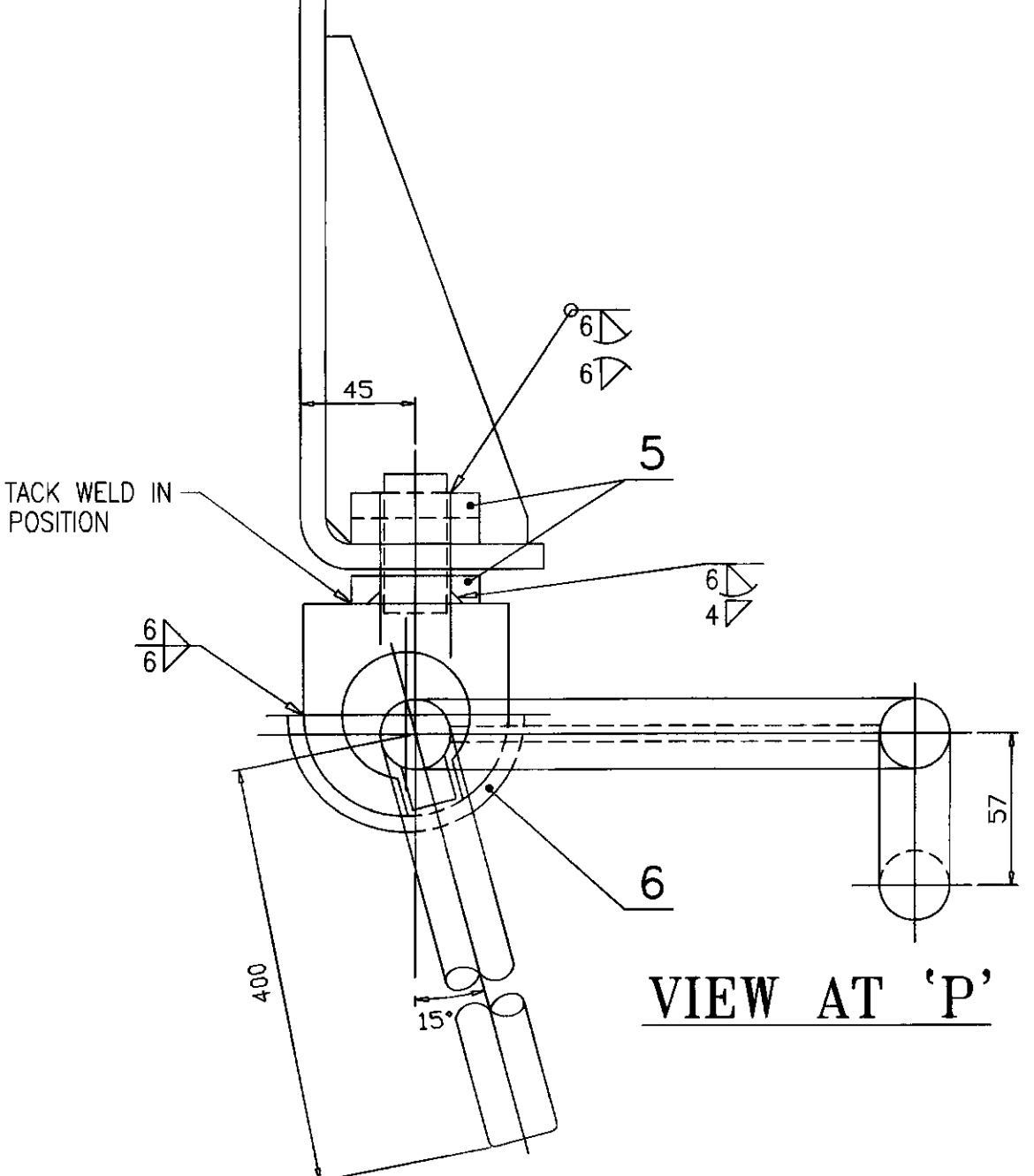
TYPES OF WAGON	WIDTH OVER SOLEBAR 'C' (mm)	DIMENSIONS (mm)	
		A	B
④ BOXC BTPN, BTPGL BTPGLN, BTOH ②	2860	156	16
⑤ ⑥ BOXN/BOXNHAM BOXNM1/BOXNM2 BOXNHS1/BOXNHS2/BOXNEL	2960	206	66
BOY	2934	193	53
④ BCXC BCN, BCNA	2950	201	61
④ BOBY BOBYN	2875	163.5	23.5
BRN, BRNA	2845	148.5	8.5
④ CRT (OVER CRIB ANGLE)	2946	199	59



④ VIEW AT 'Q'



ENLARGED SECTION - 'XX'



VIEW AT 'P'

⑧	-	WD-25078	FITMENT DETAIL MARKED FOR ITEM NO 8	10/25
⑦	-	WD-22025	VIEW FOR VACUUM BRAKE STOCK DELETED. ARRANGEMENT OF SAFETY LOCK FOR CBC OPERATING HANDLE ADDED/SHOWN.	03/22
⑥	-	WD-21086	IN TYPES OF WAGON "BOXN" ADDED.	09/2021
⑤	-	WD-20017	IN TYPES OF WAGON BOXNM1/BOXNM2 AND BOXNHS1/BOXNHS2 ADDED	06/2020
④	-	WD-18073	SAFETY LOOP FOR UNCOUPLING ROD ADDED. VIEW FOR VACUUM BRAKE & BOXC, BTPGL, BCXC, BOBY & CRT WAGON REMOVED FROM LIST.	09/18
③	-	WD-13018	IN TYPES OF WAGON "BOXNHAM" ADDED.	04/13
②	-	WD-09120	REF. FOR BTOH ADDED	01/11
①	-	WD-01015	DRAWING REVISED	7.3.2001
ALT.	ITEM	AUTHY.	DESCRIPTION	DATE

8	SAFETY LOCK FOR LOCKING ARRANGEMENT	-	-	IS:2062-E250A		
7	PIN 25 DIA. X 68 LONG	2		0.26	IS:2062 Fe 410 WA	
6	SAFETY STRAP FOR BEARING PIECE	2	W/BD-6318	-	-	
5	WASHER 50 DIA. X 12 THICK	4	W/BD-6285	-	-	
4	BEARING PIECE	2	W/BD-6284	-	-	
3	HANGER BRACKET	2	W/BD-6283	-	-	
2	COUPLER ROD (FOR VACUUM BRAKE)	2	-	-	IS:2062 Fe 410 WA	
1	COUPLER ROD (FOR AIR BRAKE)	2	-	-	IS:2062 Fe 410 WA	
ITEM	DESCRIPTION & DIMENSIONS	NO. OFF	REF. DRG.	WT. OF ONE(Kg)	MTL. & SPEC	REMARKS
SUPERSEDED BY		UNCOUPLING GEAR OF GENERAL TYPE OF WAGON				
SUPERSEDES						
SCALE	PASSED	A. N. MEHTA	09/2000			
	CHECKED	J. AHMAD	09/2000			
	DRAWN	S.S. PARWAN	09/2000			
	TRACED					
	J. SHEET	WD-00046	09/2000			
B.G.	R.D.S.O. (W)	GROUP	WD-00046-S-01			