

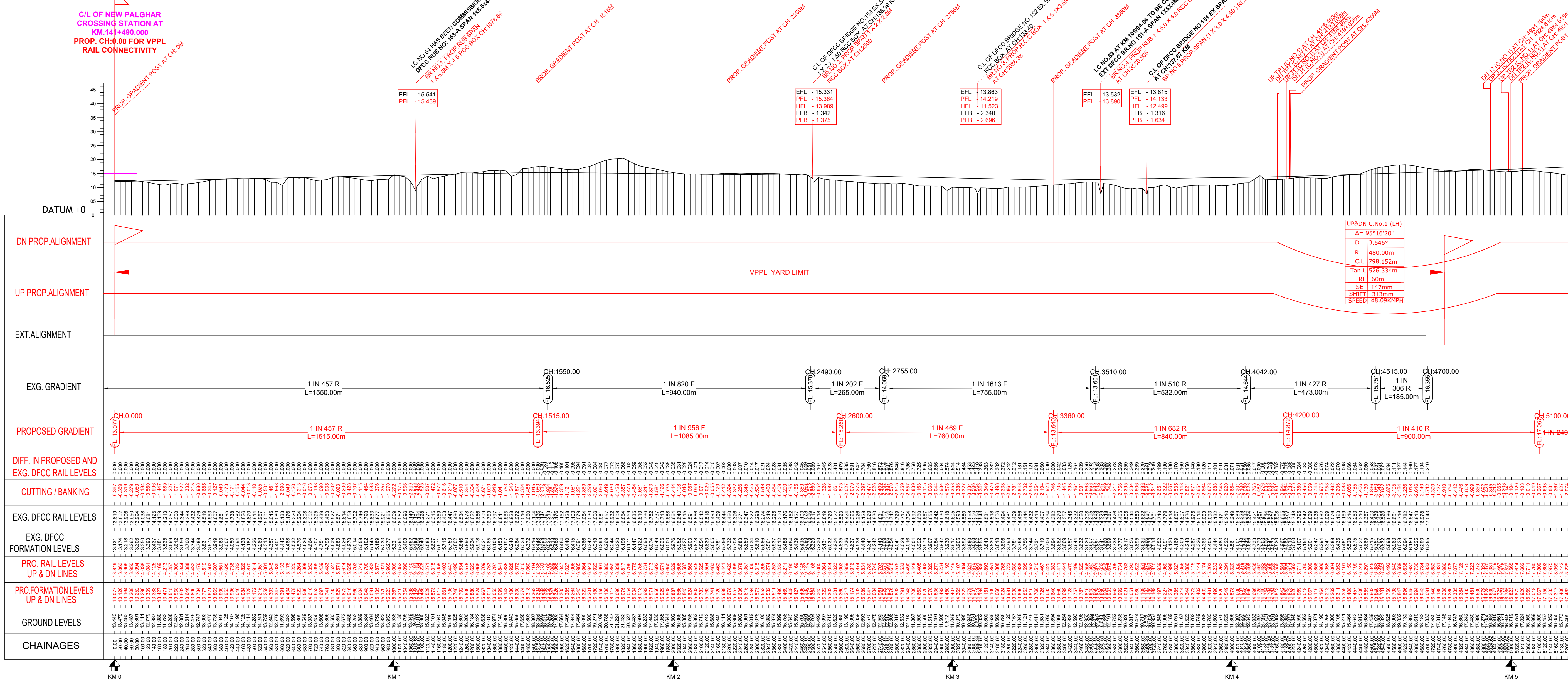
DETAILS OF PROPOSED CURVES															
S.No	Curve No	UP OR DN	LH OR RH	TP-1	J-1	J-2	TP-2	DELTA	RADIUS	DEGREE	TL	TCL	CL	CCL	TRL
1	1	UP	LH	4126.463	4186.463	4924.615	4984.615	95°16'20.558"	480.000	3.646	526.334	856.152	798.152	60.000	75.000
2	1	DN	LH	4133.038	4193.038	4931.190	4991.190	95°16'20.558"	480.000	3.646	526.334	856.152	798.152	60.000	75.000
3	4	UP	LH	10973.698	10715.698	10765.639	10865.639	379°23'06"	1750.000	1.000	45.681	131.681	91.681	40.000	41.683
4	4	DN	LH	10980.192	10859.192	10865.318	10965.318	179°38'36.937"	1750.000	1.000	22.584	75.126	45.126	15.126	30.000
5	5	UP	RH	10971.514	10811.514	10861.132	11001.132	379°23'07"	1750.000	1.000	45.681	131.681	91.681	40.000	41.683
6	5	DN	RH	10966.137	10806.137	11015.188	11045.188	179°21'43.87"	1750.000	1.000	24.527	79.051	49.051	19.051	30.000
7	6	UP	RH	11615.918	11655.918	11671.370	11719.370	97°24'42.927"	5830.000	0.300	31.726	103.452	65.452	23.452	40.000
8	6	DN	LH	11617.697	11657.697	11673.245	11721.245	175°16'44.847"	1750.000	1.000	29.807	99.648	59.648	40.000	41.683
9	7	UP	LH	11760.141	11800.141	11823.448	11863.448	97°37'19.724"	5830.000	0.300	31.653	103.365	63.365	23.365	40.000
10	7	DN	RH	11762.345	11802.345	11825.652	11865.652	175°16'54.247"	1750.000	1.000	29.840	99.692	59.692	40.000	41.683

DETAILS OF FUTURE PROPOSED CURVES															
S.No	Curve No	UP OR DN	LH OR RH	TP-1	J-1	J-2	TP-2	DELTA	RADIUS	DEGREE	TL	TCL	CL	CCL	TRL
1	1	DN	LH	-	-	-	-	84°52'56.364"	350.000	5.000	320.058	679.520	518.520	458.520	60.000

Vadhavan Port					
List Of Temporary Bench Marks (UTM Zone-43)					
Point ID	Chainage	Easting	Northing	Elevation	Remarks
TBM-1	450	265731.677	2196875.493	14.151	A Point Located on Junction Box Foundation Near OHE No:108-8
TBM-2	265755.559	219761.2756	12.453	A Point Located on Junction Box Foundation Near OHE No:108-8	
TBM-3	1387.5	265730.445	2196938.187	16.069	A Point Located on Anchor Foundation Near OHE No:139-25
TBM-4	1831.4	265679.321	2195494.572	16.354	A Point Located on OHE Mast Foundation Near OHE No:104-25
TBM-5	2383.3	265651.169	2194943.088	15.616	A Point Located on Anchor Foundation Near OHE No:106-10
TBM-6	2840.5	265635.816	2194486.196	14.110	A Point Located on Junction Box Foundation Near OHE No:105-26
TBM-7	4191.7	265608.117	2193185.707	14.100	A Point Located on Anchor Foundation Near OHE No:104-15
TBM-8	265575.585	2192667.800	16.118	A Point Located on Drain Near OHE No:103-30	
TBM-9	4855.5	264077.783	2192713.363	17.888	A Point Located on Stone Boulder

WESTERN RAILWAY													
Name of Work : FLS for New Line of Palghar - Vadhavan Port Section (22.23 Km)													
Bridge Scheme													
Sr. No.	Proposed Chainage (M)	Proposed Br. No.	Proposed								Type of Bridge	Remarks	
			Prop Span	Type	PFL	Bed Level	HFL	Soffit Level	Free Board (m)	Clearance (m)			Head Room (m)
1	1078.660	1	1x6.0x4.5m	RCC BOX	15.439	9.486	-	13.836	-	-	4.350	UnderPass	RUB
2	2500.000	2	1x2.0x2.0m	RCC BOX	15.364	12.704	13.989	14.554	1.375	0.565	1.850	Water way	MINOR
3	3088.380	3	1x6.1x3.5m	PSC Slab	14.219	8.655	11.523	13.584	2.696	2.061	4.929	Water way	MINOR
4	3530.505	4	1x5.0x4.0m	RCC BOX	13.890	8.643	-	12.493	-	-	3.850	UnderPass	RUB
5	3696.285	5	1x3.0x4.5m	RCC BOX	14.133	8.576	12.499	12.926	1.634	0.427	4.350	Water way	MINOR

BRIDGE DETAILS										
Sl.No	Proposed Chainage	Existing Br.No	Existing DFCC C/E	Existing Bridge Details						
				Existing Span	Type	PFL	Bed Level	HFL	Soffit Level	Free Board
1	1078.660	153-A (LC-54)	140327.992	1x5.5x4.5m	RCC BOX	15.541	9.486	-	13.836	-
2	2500.000	153	138993.594	1x2.0x1.50m	RCC BOX	15.331	12.704	13.989	14.054	1.342
3	3088.380	152	138406.44	1x6.1x3.5m	RCC BOX	13.863	8.655	11.523	12.005	2.340
4	3530.505	151-A (LC-53)	137958.183	1x5.0x4.0m	RCC BOX	13.532	8.643	-	12.493	-
5	3696.285	151	137870.57	1x3.0x4.50m	RCC BOX	13.815	8.576	12.499	12.926	1.316



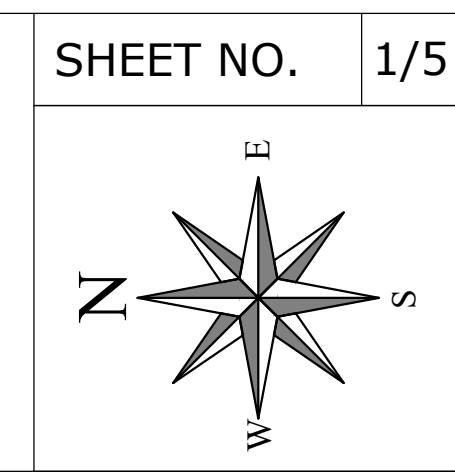
LC TABLE				
S.NO.	LC.No	CHAINAGE (KM)	PROPOSED SPAN	REMARKS
MAJOR BRIDGES:-	0	NOS.		
MINOR BRIDGES:-	3	NOS.		
RUB :-	2	NOS.		
CURVES :-	1	NOS.		

PSR TABLE				
S.NO.	LINE NOMENCLATURE	FROM CHAINAGE (KM)	TO CHAINAGE (KM)	REASONS REMARK FOR PSR
1	PROP UP & DN LINES	4126.463	4984.615	798.152m Degree of curve 3.646 and design speed 70 km/ph

PROPOSED INFIRMING TABLE				
SR. NO.	TYPE OF INFIRMING	CHAPTER & ITEM	FROM CHAINAGE	TO CHAINAGE

PROP. TRACK STRUCTURE (VPPL SIDING)		
SR. NO.	DESCRIPTION	VALUE
01	RAIL (BG)	60 KG
02	SLEEPER	PSC (1660 Nos Per Km)
03	BALLAST	350 mm

MAXIMUM DESIGN SPEED	110 KM/H
SECTIONAL SPEED FOR SECTION	85 KM/H
RULING GRADIENT OF THE SECTION	1:200
STANDARD OF LOADING FOR BRIDGES	25T LOADING - 2008
STANDARD OF LOADING FOR FORMATION	25 AXLE LOAD



NOTES:
1. ALL CHAINAGES ARE GIVEN IN METERS.
2. EXISTING GROUND LEVELS ARE GIVEN IN METER.
3. EXISTING RAILWAY TRACKS ARE SHOWN IN RED.
4. EXISTING ROAD LINES ARE SHOWN IN RED.
5. EXISTING POWER LINES ARE SHOWN IN RED.
6. EXISTING TELEPHONE LINES ARE SHOWN IN RED.
7. EXISTING WATER LINES ARE SHOWN IN RED.
8. EXISTING GAS LINES ARE SHOWN IN RED.
9. EXISTING CABLE LINES ARE SHOWN IN RED.
10. EXISTING FIBER OPTIC LINES ARE SHOWN IN RED.
11. EXISTING SATELLITE LINES ARE SHOWN IN RED.
12. EXISTING RADIO LINES ARE SHOWN IN RED.
13. EXISTING TELEVISION LINES ARE SHOWN IN RED.
14. EXISTING SOUND LINES ARE SHOWN IN RED.
15. EXISTING LIGHT LINES ARE SHOWN IN RED.
16. EXISTING HEAT LINES ARE SHOWN IN RED.
17. EXISTING COOL LINES ARE SHOWN IN RED.
18. EXISTING POWER LINES ARE SHOWN IN RED.
19. EXISTING TELEPHONE LINES ARE SHOWN IN RED.
20. EXISTING WATER LINES ARE SHOWN IN RED.

LEGENDS	
EXISTING WORK	
PROP. VPPL LINE	
EXG. MPVC LINE	
EXG. DFCC LINE	
PROP. DFCC FUTURE LINE	
PROP. DFCC LOOP LINE	
EXG. DFCC BOUNDARY LINE	
PROPOSED EX. LAND BOUNDARY	
APPROACH ROAD FOR DFCC STN.	
EXISTING TRANSMISSION LINES	
Y-CONNECTION TOWARDS MUMBAI	

Signature block	
DRG-CLG-CGS	
DY-CLG-CLG-CGS	
AN-CLG-CLG-CGS	
SE-CLG-CLG-CGS	
DE-CLG-CGS	
DY-CLG-CLG-CGS	
AN-CLG-CLG-CGS	
SSC-CLG-CLG-CGS	
DRM-AMCT	
AN-AMCT	
BRD-AMCT	
BRD-AMCT	
DY-CLG-CGS	
AN-CLG-CGS	
SSC-CLG-CGS	
DRM-AMCT	
AN-AMCT	
BRD-AMCT	
BRD-AMCT	
DY-CLG-CGS	
AN-CLG-CGS	
SSC-CLG-CGS	
DRM-AMCT	
AN-AMCT	
BRD-AMCT	
BRD-AMCT	
DY-CLG-CGS	
AN-CLG-CGS	
SSC-CLG-CGS	
DRM-AMCT	
AN-AMCT	
BRD-AMCT	
BRD-AMCT	
DY-CLG-CGS	
AN-CLG-CGS	
SSC-CLG-CGS	
DRM-AMCT	
AN-AMCT	
BRD-AMCT	
BRD-AMCT	
DY-CLG-CGS	
AN-CLG-CGS	
SSC-CLG-CGS	
DRM-AMCT	
AN-AMCT	
BRD-AMCT	
BRD-AMCT	
DY-CLG-CGS	
AN-CLG-CGS	
SSC-CLG-CGS	
DRM-AMCT	
AN-AMCT	
BRD-AMCT	
BRD-AMCT	
DY-CLG-CGS	
AN-CLG-CGS	
SSC-CLG-CGS	
DRM-AMCT	
AN-AMCT	
BRD-AMCT	
BRD-AMCT	
DY-CLG-CGS	
AN-CLG-CGS	
SSC-CLG-CGS	
DRM-AMCT	
AN-AMCT	
BRD-AMCT	
BRD-AMCT	
DY-CLG-CGS	
AN-CLG-CGS	
SSC-CLG-CGS	
DRM-AMCT	
AN-AMCT	
BRD-AMCT	
BRD-AMCT	
DY-CLG-CGS	
AN-CLG-CGS	
SSC-CLG-CGS	
DRM-AMCT	
AN-AMCT	
BRD-AMCT	
BRD-AMCT	
DY-CLG-CGS	
AN-CLG-CGS	
SSC-CLG-CGS	
DRM-AMCT	
AN-AMCT	
BRD-AMCT	
BRD-AMCT	
DY-CLG-CGS	
AN-CLG-CGS	
SSC-CLG-CGS	
DRM-AMCT	
AN-AMCT	
BRD-AMCT	
BRD-AMCT	
DY-CLG-CGS	
AN-CLG-CGS	
SSC-CLG-CGS	
DRM-AMCT	
AN-AMCT	
BRD-AMCT	
BRD-AMCT	
DY-CLG-CGS	
AN-CLG-CGS	
SSC-CLG-CGS	
DRM-AMCT	
AN-AMCT	
BRD-AMCT	
BRD-AMCT	
DY-CLG-CGS	
AN-CLG-CGS	
SSC-CLG-CGS	
DRM-AMCT	
AN-AMCT	
BRD-AMCT	
BRD-AMCT	
DY-CLG-CGS	
AN-CLG-CGS	
SSC-CLG-CGS	
DRM-AMCT	
AN-AMCT	
BRD-AMCT	
BRD-AMCT	
DY-CLG-CGS	
AN-CLG-CGS	
SSC-CLG-CGS	
DRM-AMCT	
AN-AMCT	
BRD-AMCT	
BRD-AMCT	
DY-CLG-CGS	
AN-CLG-CGS	
SSC-CLG-CGS	
DRM-AMCT	
AN-AMCT	
BRD-AMCT	
BRD-AMCT	
DY-CLG-CGS	
AN-CLG-CGS	
SSC-CLG-CGS	
DRM-AMCT	
AN-AMCT	
BRD-AMCT	
BRD-AMCT	
DY-CLG-CGS	
AN-CLG-CGS	
SSC-CLG-CGS	
DRM-AMCT	
AN-AMCT	
BRD-AMCT	
BRD-AMCT	
DY-CLG-CGS	
AN-CLG-CGS	
SSC-CLG-CGS	
DRM-AMCT	
AN-AMCT	
BRD-AMCT	
BRD-AMCT	
DY-CLG-CGS	
AN-CLG-CGS	
SSC-CLG-CGS	
DRM-AMCT	
AN-AMCT	
BRD-AMCT	
BRD-AMCT	
DY-CLG-CGS	
AN-CLG-CGS	
SSC-CLG-CGS	
DRM-AMCT	
AN-AMCT	
BRD-AMCT	
BRD-AMCT	
DY-CLG-CGS	
AN-CLG-CGS	
SSC-CLG-CGS	
DRM-AMCT	
AN-AMCT	
BRD-AMCT	
BRD-AMCT	
DY-CLG-CGS	
AN-CLG-CGS	
SSC-CLG-CGS	
DRM-AMCT	
AN-AMCT	
BRD-AMCT	
BRD-AMCT	
DY-CLG-CGS	
AN-CLG-CGS	
SSC-CLG-CGS	
DRM-AMCT	
AN-AMCT	
BRD-AMCT	
BRD-AMCT	
DY-CLG-CGS	
AN-CLG-CGS	
SSC-CLG-CGS	
DRM-AMCT	
AN-AMCT	
BRD-AMCT	
BRD-AMCT	
DY-CLG-CGS	
AN-CLG-CGS	
SSC-CLG-CGS	
DRM-AMCT	
AN-AMCT	
BRD-AMCT	
BRD-AMCT	
DY-CLG-CGS	
AN-CLG-CGS	
SSC-CLG-CGS	
DRM-AMCT	
AN-AMCT	
BRD-AMCT	
BRD-AMCT	
DY-CLG-CGS	
AN-CLG-CGS	
SSC-CLG-CGS	
DRM-AMCT	
AN-AMCT	
BRD-AMCT	
BRD-AMCT	
DY-CLG-CGS	
AN-CLG-CGS	
SSC-CLG-CGS	
DRM-AMCT	
AN-AMCT	
BRD-AMCT	
BRD-AMCT	
DY-CLG-CGS	
AN-CLG-CGS	
SSC-CLG-CGS	
DRM-AMCT	
AN-AMCT	
BRD-AMCT	
BRD-AMCT	
DY-CLG-CGS	
AN-CLG-CGS	
SSC-CLG-CGS	
DRM-AMCT	
AN-AMCT	
BRD-AMCT	
BRD-AMCT	
DY-CLG-CGS	
AN-CLG-CGS	
SSC-CLG-CGS	
DRM-AMCT	
AN-AMCT	
BRD-AMCT	
BRD-AMCT	
DY-CLG-CGS	
AN-CLG-CGS	
SSC-CLG-CGS	
DRM-AMCT	
AN-AMCT	
BRD-AMCT	
BRD-AMCT	
DY-CLG-CGS	
AN-CLG-CGS	
SSC-CLG-CGS	
DRM-AMCT	
AN-AMCT	
BRD-AMCT	
BRD-AMCT	
DY-CLG-CGS	
AN-CLG-CGS	
SSC-CLG-CGS	
DRM-AMCT	
AN-AMCT	
BRD-AMCT	
BRD-AMCT	
DY-CLG-CGS	
AN-CLG-CGS	
SSC-CLG-CGS	
DRM-AMCT	
AN-AMCT	
BRD-AMCT	
BRD-AMCT	
DY-CLG-CGS	
AN-CLG-CGS	
SSC-CLG-CGS	
DRM-AMCT	
AN-AMCT	
BRD-AMCT	
BRD-AMCT	
DY-CLG-CGS	
AN-CLG-CGS	
SSC-CLG-CGS	
DRM-AMCT	
AN-AMCT	
BRD-AMCT	
BRD-AMCT	
DY-CLG-CGS	
AN-CLG-CGS	
SSC-CLG-CGS	
DRM-AMCT	
AN-AMCT	
BRD-AMCT	
BRD-AMCT	
DY-CLG-CGS	
AN-CLG-CGS	
SSC-CLG-CGS	
DRM-AMCT	
AN-AMCT	
BRD-AMCT	
BRD-AMCT	
DY-CLG-CGS	
AN-CLG-CGS	
SSC-CLG-CGS	
DRM-AMCT	
AN-AMCT	
BRD-AMCT	
BRD-AMCT	
DY-CLG-CGS	
AN-CLG-CGS	
SSC-CLG-CGS	
DRM-AMCT	
AN-AMCT	
BRD-AMCT	
BRD-AMCT	
DY-CLG-CGS	
AN-CLG-CGS	
SSC-CLG-CGS	
DRM-AMCT	
AN-AMCT	
BRD-AMCT	
BRD-AMCT	
DY-CLG-CGS	
AN-CLG-CGS	
SSC-CLG-CGS	
DRM-AMCT	
AN-AMCT	
BRD-AMCT	
BRD-AMCT	
DY-CLG-CGS	
AN-CLG-CGS	
SSC-CLG-CGS	
DRM-AMCT	
AN-AMCT	
BRD-AMCT	
BRD-AMCT	
DY-CLG-CGS	
AN-CLG-CGS	
SSC-CLG-CGS	
DRM-AMCT	
AN-AMCT	
BRD-AMCT	
BRD-AMCT	
DY-CLG-CGS	
AN-CLG-CGS	
SSC-CLG-CGS	
DRM-AMCT	
AN-AMCT	
BRD-AMCT	
BRD-AMCT	
DY-CLG-CGS	
AN-CLG-CGS	
SSC-CLG-CGS	
DRM-AMCT	
AN-AMCT	
BRD-AMCT	
BRD-AMCT	
DY-CLG-CGS	
AN-CLG-CGS	
SSC-CLG-CGS	
DRM-AMCT	
AN-AMCT	
BRD-AMCT	
BRD-AMCT	
DY-CLG-CGS	
AN-CLG-CGS	
SSC-CLG-CGS	
DRM-AMCT	
AN-AMCT	
BRD-AMCT	
BRD-AMCT	
DY-CLG-CGS	
AN-CLG-CGS	
SSC-CLG-CGS	
DRM-AMCT	
AN-AMCT	
BRD-AMCT	
BRD-AMCT	
DY-CLG-CGS	
AN-CLG-CGS	
SSC-CLG-CGS	
DRM-AMCT	
AN-AMCT	
BRD-AMCT	
BRD-AMCT	
DY-CLG-CGS	
AN-CLG-CGS	
SSC-CLG-CGS	
DRM-AMCT	
AN-AMCT	
BRD-AMCT	
BRD-AMCT	
DY-CLG-CGS	
AN-CLG-CGS	
SSC-CLG-CGS	
DRM-AMCT	
AN-AMCT	
BRD-AMCT	
BRD-AMCT	
DY-CLG-CGS	
AN-CLG-CGS	
SSC-CLG-CGS	
DRM-AMCT	
AN-AMCT	
BRD-AMCT	
BRD-AMCT	
DY-CLG-CGS	
AN-CLG-CGS	
SSC-CLG-CGS	
DRM-AMCT	
AN-AMCT	
BRD-AMCT	
BRD-AMCT	
DY-CLG-CGS	
AN-CLG-CGS	
SSC-CLG-CGS	
DRM-AMCT	
AN-AMCT	
BRD-AMCT	
BRD-AMCT	
DY-CLG-CGS	
AN-CLG-CGS	
SSC-CLG-CGS	
DRM-AMCT	
AN-AMCT	
BRD-AMCT	
BRD-AMCT	
DY-CLG-CGS	
AN-CLG-CGS	
SSC-CLG-CGS	
DRM-AMCT	
AN-AMCT	
BRD-AMCT	
BRD-AMCT	
DY-CLG-CGS	
AN-CLG-CGS	
SSC-CLG-CGS	
DRM-AMCT	
AN-AMCT	
BRD-AMCT	
BRD-AMCT	
DY-CLG-CGS	
AN-CLG-CGS	
SSC-CLG-CGS	
DRM-AMCT	
AN-AMCT	
BRD-AMCT	
BRD-AMCT	
DY-CLG-CGS	
AN-CLG-CGS	
SSC-CLG-CGS	
DRM-AMCT	
AN-AMCT	
BRD-AMCT	
BRD-AMCT	
DY-CLG-CGS	
AN-CLG-CGS	
SSC-CLG-CGS	
DRM-AMCT	
AN-AMCT	
BRD-AMCT	
BRD-AMCT	
DY-CLG-CGS	
AN-CLG-CGS	
SSC-CLG-CGS	
DRM-AMCT	
AN-AMCT	
BRD-AMCT	
BRD-AMCT	
DY-CLG-CGS	
AN-CLG-CGS	
SSC-CLG-CGS	
DRM-AMCT	
AN-AMCT	
BRD-AMCT	
BRD-AMCT	
DY-CLG-CGS	
AN-CLG-CGS	
SSC-CLG-CGS	
DRM-AMCT	
AN-AMCT	
BRD-AMCT	
BRD-AMCT	
DY-CLG-CGS	
AN-CLG-CGS	
SSC-CLG-CGS	
DRM-AMCT	
AN-AMCT	
BRD-AMCT	
BRD-AMCT	
DY-CLG-CGS	
AN-CLG-CGS	
SSC-CLG-CGS	
DRM-AMCT	
AN-AMCT	
BRD-AMCT	
BRD-AMCT	
DY-CLG-CGS	
AN-CLG-CGS	
SSC-CLG-CGS	
DRM-AMCT	
AN-AMCT	
BRD-AMCT	
BRD-AMCT	
DY-CLG-CGS	
AN-CLG-CGS	
SSC-CLG-CGS	
DRM-AMCT	
AN-AMCT	
BRD-AMCT	
BRD-AMCT	
DY-CLG-CGS	
AN-CLG-CGS	
SSC-CLG-CGS	
DRM-AMCT	
AN-AMCT	
BRD-AMCT	
BRD-AMCT	
DY-CLG-CGS	
AN-CLG-CGS	
SSC-CLG-CGS	
DRM-AMCT	
AN-AMCT	
BRD-AMCT	
BRD-AMCT	
DY-CLG-CGS	
AN-CLG-CGS	
SSC-CLG-CGS	
DRM-AMCT	
AN-AMCT	
BRD-AMCT	
BRD-AMCT	
DY-CLG-CGS	
AN-CLG-CGS	
SSC-CLG-CGS	
DRM-AMCT	
AN-AMCT	
BRD-AMCT	
BRD-AMCT	
DY-CLG-CGS	
AN-CLG-CGS	
SSC-CLG-CGS	
DRM-AMCT	
AN-AMCT	
BRD-AMCT	
BRD-AMCT	
DY-CLG-CGS	
AN-CLG-CGS	
SSC-CLG-CGS	
DRM-AMCT	
AN-AMCT	
BRD-AMCT	
BRD-AMCT	
DY-CLG-CGS	
AN-CLG-CGS	
SSC-CLG-CGS	
DRM-AMCT	
AN-AMCT	
BRD-AMCT	
BRD-AMCT	
DY-CLG-CGS	
AN-CLG-CGS	
SSC-CLG-CGS	
DRM-AMCT	
AN-AMCT	
BRD-AMCT	
BRD-AMCT	
DY-CLG-CGS	
AN-CLG-CGS	
SSC-CLG-CGS	
DRM-AMCT	
AN-AMCT	
BRD-AMCT	
BRD-AMCT	
DY-CLG-CGS	
AN-CLG-CGS	
SSC-CLG-CGS	
DRM-AMCT	
AN-AMCT	
BRD-AMCT	
BRD-AMCT	
DY-CLG-CGS	
AN-CLG-CGS	
SSC-CLG-CGS	
DRM-AMCT	
AN-AMCT	
BRD-AMCT	
BRD-AMCT	
DY-CLG-CGS	
AN-CLG-CGS	
SSC-CLG-CGS	
DRM-AMCT	
AN-AMCT	
BRD-AMCT	
BRD-AMCT	
DY-CLG-CGS	
AN-CLG-CGS	
SSC-CLG-CGS	
DRM-AMCT	
AN-AMCT	
BRD-AMCT	
BRD-AMCT	
DY-CLG-CGS	
AN-CLG-CGS	
SSC-CLG-CGS	
DRM-AMCT	
AN-AMCT	
BRD-AMCT	
BRD-AMCT	
DY-CLG-CGS	
AN-CLG-CGS	
SSC-CLG-CGS	
DRM-AMCT	
AN-AMCT	
BRD-AMCT	
BRD-AMCT	
DY-CLG-CGS	
AN-CLG-CGS	
SSC-CLG-CGS	
DRM-AMCT	
AN-AMCT	
BRD-AMCT	
BRD-AMCT	
DY-CLG-CGS	
AN-CLG-CGS	
SSC-CLG-CGS	
DRM-AMCT	
AN-AMCT	
BRD-AMCT	
BRD-AMCT	
DY-CLG-CGS	
AN-CLG-CGS	
SSC-CLG-CGS	
DRM-AMCT	
AN-AMCT	
BRD-AMCT	
BRD-AMCT	
DY-CLG-CGS	
AN-CLG-CGS	
SSC-CLG-CGS	
DRM-AMCT	
AN-AMCT	
BRD-AMCT	
BRD-AMCT	
DY-CLG-CGS	
AN-CLG-CGS	
SSC-CLG-CGS	
DRM-AMCT	
AN-AMCT	
BRD-AMCT	
BRD-AMCT	
DY-CLG-CGS	
AN-CLG-CGS	
SSC-CLG-CGS	
DRM-AMCT	
AN-AMCT	
BRD-AMCT	
BRD-AMCT	
DY-CLG-CGS	
AN-CLG-CGS	
SSC-CLG-CGS	
DRM-AMCT	
AN-AMCT	
BRD-AMCT	
BRD-AMCT	