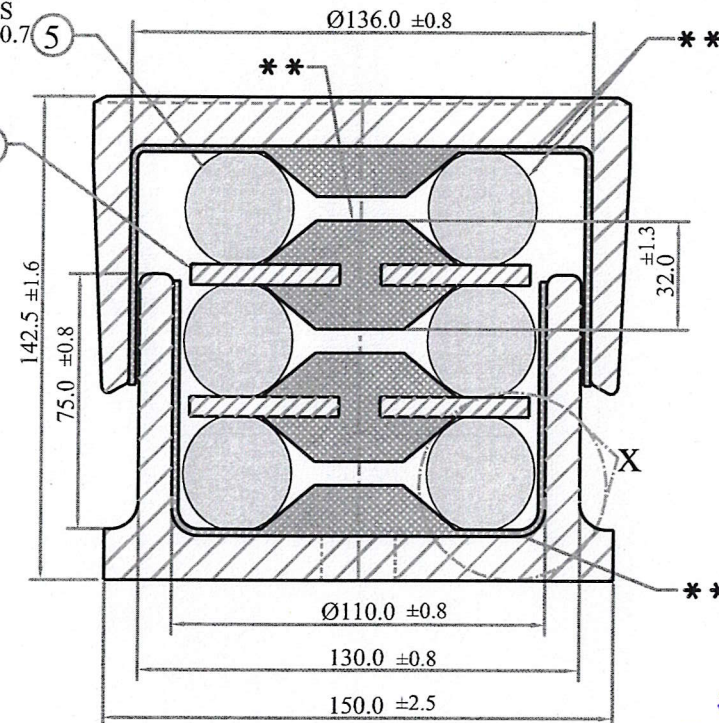
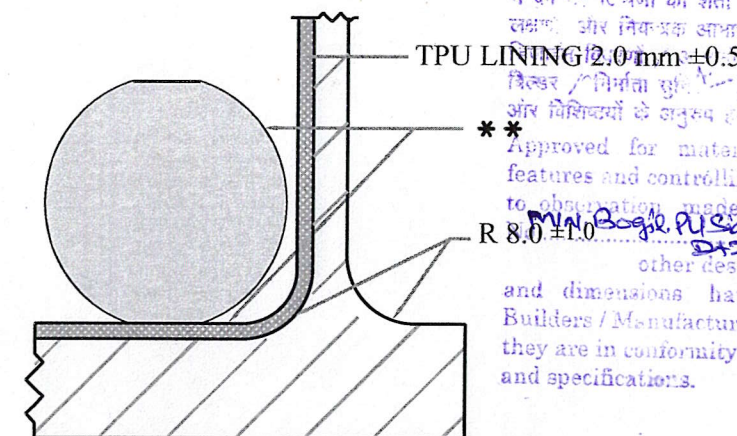
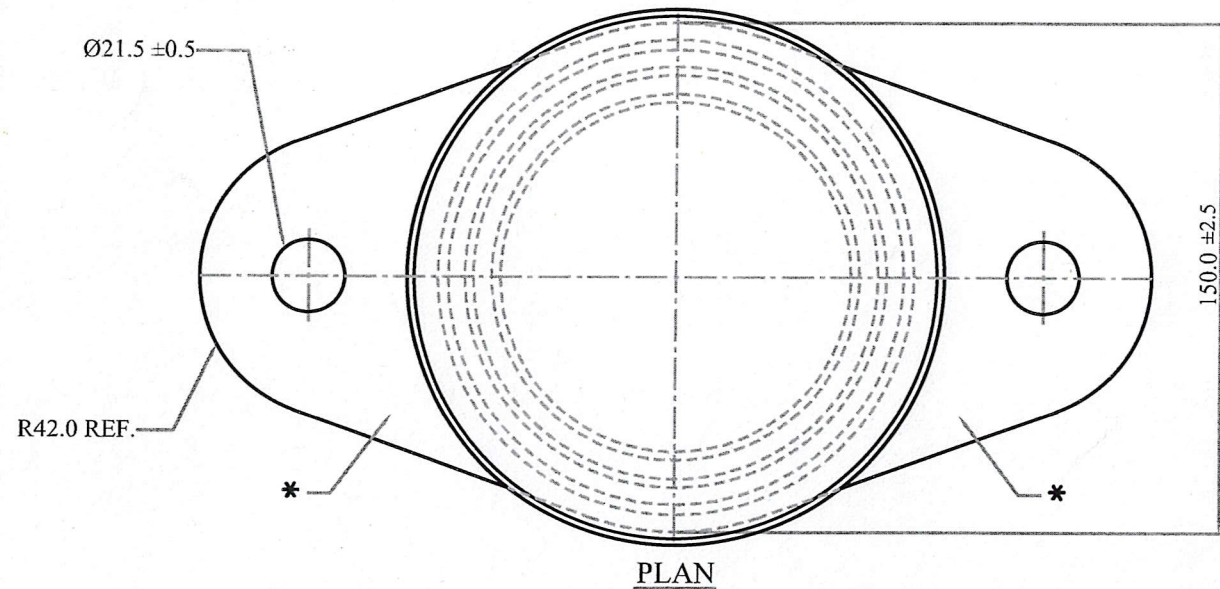


POLY RING WITH
FLATTENED SURFACES
Ø101±2 X Ø40 ±2 X 33 ±0.7

ROUND PLATE 3
Ø104.0 ±0.8X6.0 ±0.5



- ALT. 1 Forged or Cast Steel top & bottom housing is used instead of fabricated one.
- ALT. 2 Only Forged Steel top & bottom housing is used
- ALT. 3 1. Tolerances added
2. Item no. 6 Material Changed to Mild Steel (IS:2062 Fe 410 WA)
- ALT. 4 1. Item no. 6 removed.
2. Top housing outer is as received After Forging.
3. Height of Pad Changed to 142 ±1 From 143 ±1
- ALT. 5 1. Height of Pad Changed From 142.0 ±1.0 To 142.5 ±1.6 mm
2. Ring Thickness Changed From 31.5 ±1.3 To 33.0 ±0.7 mm
3. Plate Thickness Tolerance Changed From ±0.75/0.3 To ±0.5 mm
4. Top Housing Thickness 20.0 mm Changed to 16.5 ±0.5 mm
5. Bottom Housing Thickness Changed From 16.0 ±0.5 to 15.0 ±0.5
6. Static Load Deflection Characteristics : Deflection Value at a load of 2.7 Tonnes Changed From 17-18mm To 18.5 - 20.5 mm
- ALT. 6 1. Nomenclature changed to constant Contact Polymer Side Bearer Assy From Polymer Pad Side Bearer Assy.
2. Top & Bottom Housing cut to accomodate 2 mm lining
3. Spacer Plate OD Changed to Ø100 From Ø108 and PU Stopper Spring Moulded to Spacer Plate.
4. PU Internal Lining of 2 mm Bonded to Bottom & Top Housing Added.



- ALT. 7 1. Polyring with Flatened top Surface O.D. Changed from 103.0 to 101.0 ±2.0 mm
2. Round Plate O.D.Changed From 100.0 ±0.8 mm to 104.0 ±0.8 mm
3. Radius at the Bottom Housing Changed to R 8 from R4
4. Top Housing Depth Changed From 75.0 ±0.8 to 71.0 ±0.8
- ALT. 8 1. Tolerance ±2.0 mm added at dim. Ø 40.0
2. PU Internal Lining of 2.0 mm ±0.5 mm Bonding to Bottom & Top Housing Deleted.
3. Tolerance ±2.0 mm Added at Dim. Ø57.0 mm & Tolerance ±1.3 mm added at dim. 32.0 mm & Tolerance ±0.5 mm added at dim. 13.0 & Tolerance ±1.0 added at R8.0
4. Dim. 7.0 mm Stopper Spring Gap Removed Since not measurable.
5. Bottom Housing Thickness Increased From 4.5 mm to 10.0 mm
6. Bottom Housing O.D. Changed From 119.0 ±0.8 mm to 130.0 ±0.8 mm
7. Top Housing I.D. Changed From 125.0 ±0.8 mm to 136.0 ±0.8 mm
8. Top Housing O.D. Changed From 153.0 ±2.5 mm to 158.0 ±2.5 mm
- ALT. 9 1. L-30 Added
** Marked Mfr. Initial, Month & Year On PU Rings, Stopper Spring And TPU Lining (Top & Bottom) By Laser Engraving
2. Item No. 3 Steel Grade Change Since IS Specification Revised
3. QTY. Added In Items
4. Dimension 14.5 added in Top Housing
5. Chemical Composition & Mechanical Properties added
6. Weight & Height at 45.0 T Added

दिनांक: 22/12/2025
Dated: 22/12/2025

- ALT. 10 1. L-30 Added
** Marked Mfr. Initial, Month & Year On PU Rings, Stopper Spring And TPU Lining (Top & Bottom) By Laser Engraving
2. Item No. 3 Steel Grade Change Since IS Specification Revised
3. QTY. Added In Items
4. Dimension 14.5 added in Top Housing
5. Chemical Composition & Mechanical Properties added
6. Weight & Height at 45.0 T Added

AVADH RAIL INFRA LTD.
ARYAN EXPORTER (P) LTD.
PRAG INDUSTRIES (INDIA) PVT. LTD.

FOR HS BOGIES

CONSTANT CONTACT POLYURETHANE
SIDE BEARER PAD ASSEMBLY

DRG. No. AAL - 021101

Chemical Composition :-
of IS - 1875 Class IV C 0.40-0.50 Si 0.15-0.35 Mn 0.60-0.90 S 0.04 (Max) P 0.04 (Max)

Mechanical Properties :-
of IS - 1875 Class IV T.S. (Min) 620 (Mpa) Y.S. (Min) 320 (Mpa) Elongation (Min) 15% Hardness (Min) 175 BHN

- * MARKED MFR. INITIAL, MONTH-YEAR, DRG. NO. , L - 30
- ** MARKED MFR. INITIAL, MONTH & YEAR ON PU RINGS, STOPPER SPRING AND TPU LINING (TOP & BOTTOM) BY LASER ENGRAVING

UNIT WEIGHT	HEIGHT AT 45 T
11.5 ± 0.8 kg.	110.0 ± 2.0 mm

STIFFNESS:138.5 Kg/mm		TPU LINING TOP & BOTTOM	
2.7	18.5 - 20.5	6 STOPPER SPRING	DESMOPAN ELASTOMER
LOAD (TONNE)	DEFLECTION (MM)	5 POLYRINGS	POLYURETHANE ELASTOMER
STATIC LOAD DEFLECTION		4 TOP HOUSING	DESMOPAN ELASTOMER
		3 ROUND PLATE	STEEL
		2 BOTTOM HOUSING	FORGED STEEL
		1 ITEM	
		DESCRIPTION	SPECIFICATION

ALL DIMENSIONS ARE IN MM

IN NOS ALT. NO. DATE DRAWN BY. CHECKED BY APPRD. BY