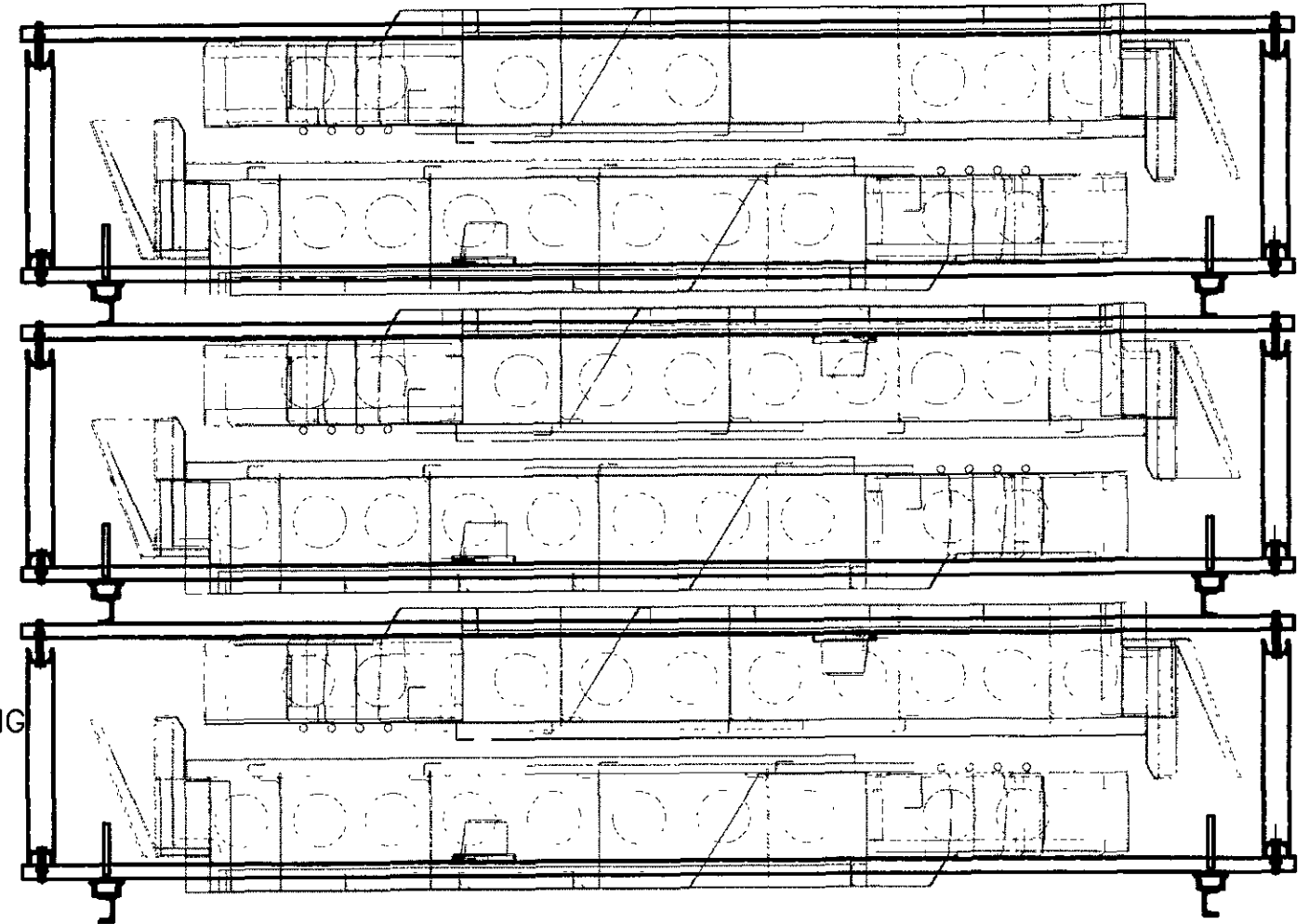


ALTERATIONS

ⓐ DATE:04-03-22
JOB NO.680/21-22
1.NOTE 12 ADDED.
KP *SSE/J&T*

SECTION AA

- NOTE:
1. FRAME TO BE FABRICATED FROM SUITABLE MS CHANNELS.
 2. FRAME SHOULD BE OF ADEQUATE STRENGTH FOR TRANSPORTING & LIFTING.
 3. DIMENSIONS SHOWN ARE INDICATIVE ONLY.
 4. PACKING SHALL BE SUCH THAT END WALL SHALL NOT GET DAMAGED DURING TRANSPORTING AND LIFTING.
 5. END WALL TO BE HELD TIGHT WITH THE FRAME WITH STEEL OR POLYESTER BANDS.
 6. PACKING CONDITION SHOWN IS FOR GUIDANCE ONLY.
 7. SUITABLE NAME PLATE INDICATING SUPPLIER NAME, MONTH & YEAR OF MANUFACTURE TO BE FIXED ON THE FRAME.
 8. PACKING SHOULD BE OPENED AT THE TIME OF ASSEMBLY.
 9. THE COMPONENT SHOULD REMAIN IN PACKED CONDITION DURING THE STORAGE.
 10. SUITABLE RIBS TO BE WELDED TO THE CHANNELS TO WITHSTAND THE LOAD.
 11. END WALL FOR ONE COACH SET TO BE PACKED IN ONE FRAME & NECESSARY WOODEN PACKING TO BE PROVIDED IN BETWEEN TWO END WALLS.
 12. ALL THREADED HOLES OF ENDWALL TO BE PLUGGED WITH PLASTIC DUMMY SCREWS TO AVOID DAMAGE OF THREADS.



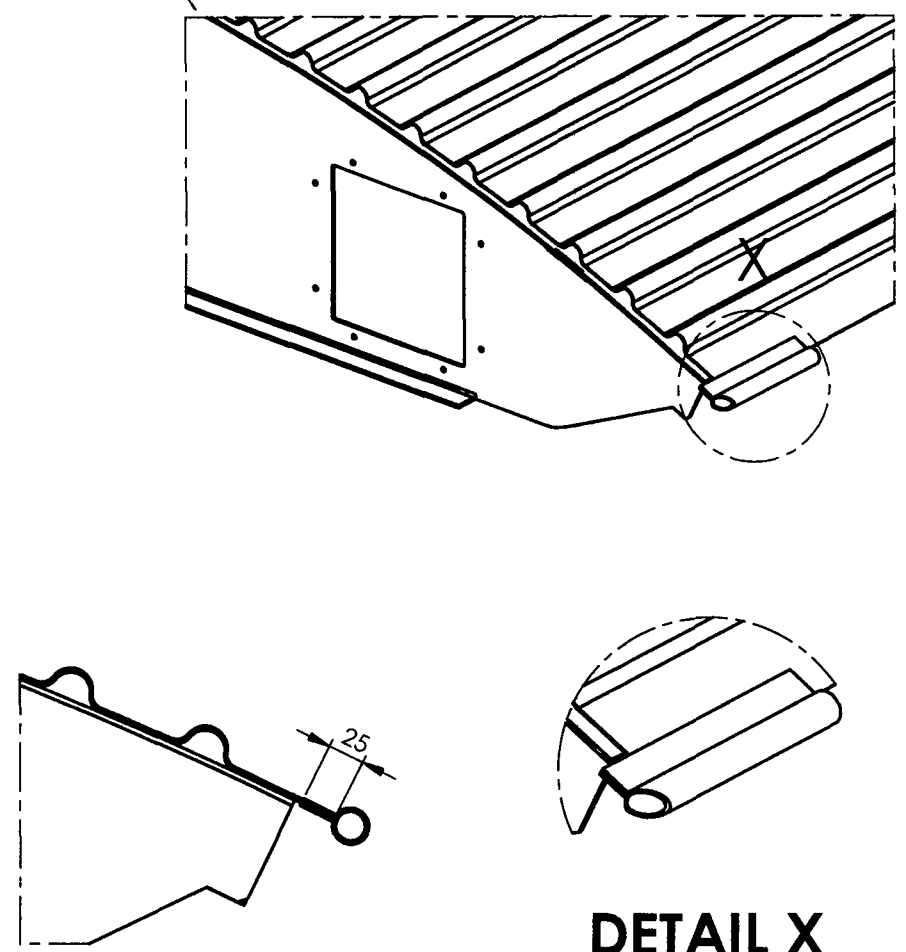
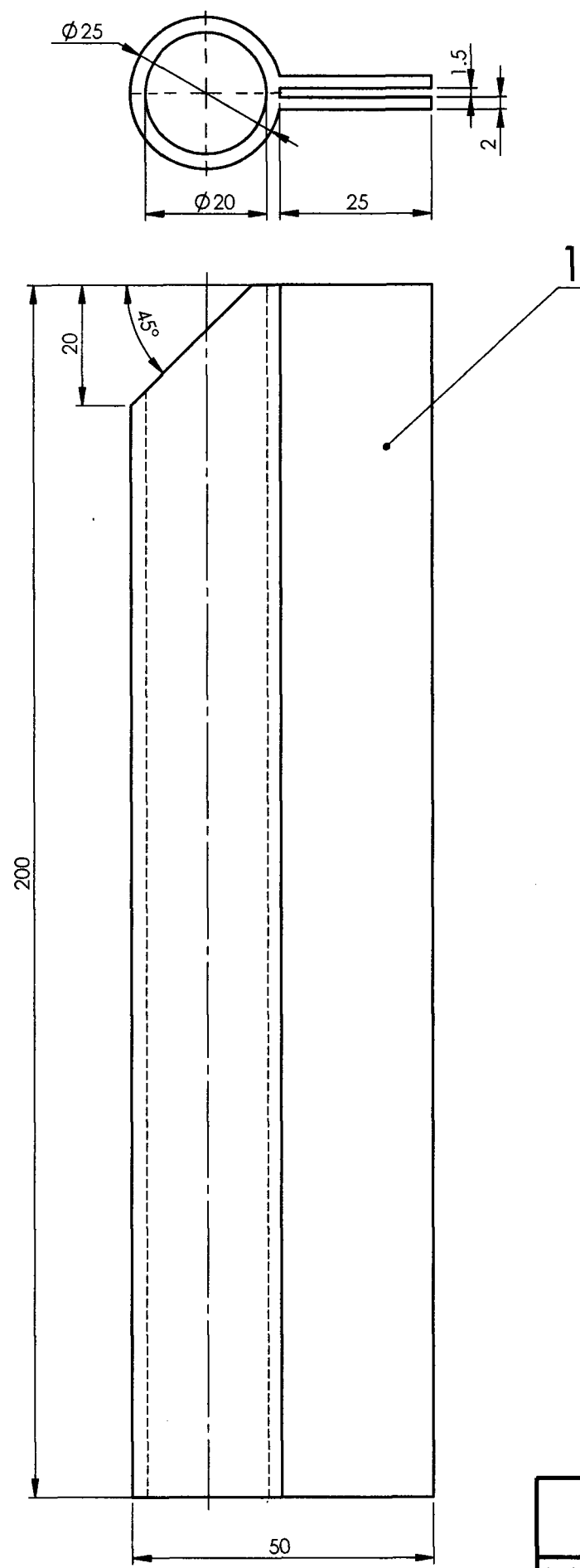
SCHEMATIC VIEW SHOWING END WALL IN STACKED CONDITION

THE PACKING FRAMES/STRUCTURES ARE TO BE TAKEN BACK BY THE SUPPLIER FROM ICF PREMISES AFTER THE COMPONENTS ARE TAKEN FOR PRODUCTION

ASSEMBLY DRAWINGS		
DATE	SME/D	AME/J&T

NO.	OFF	DESCRIPTION & DIMENSIONS	ITEM	REF. DRGS.	MAT.& SPEC	REMARKS
		CADFILE:-\\10.53.12.205\JIG&TOOL\J&T-CAD\SKT\SKT_1809_a.DWG			SUPERSEDED BY:	
PACKING CONDITION FOR LHB END WALL						SUPERSEDES:
SCALE		SSE/D	CHD			
1:20		DRN				
1:10		CAD				
ALT						
						INTEGRAL COACH FACTORY CHENNAI-38
ICF/J&T/SK-1809						

▽	ROUGH MACHINED		ALTERATIONS
▽▽	FINISH MACHINED		
▽▽▽	FINE FINISH MACHINED		



DETAIL X

SCALE 1 : 5

ROOF ASSY WITH PROTECTIVE RUBBER BEADING

NOTE:-

RUBBER BEADING TO BE PASTED ON ALL FOUR ROOF SHEET EDGES AS SHOWN WITH NON FLAMMABLE RUBBER ADHESIVE AS PER ICF/MD/SPEC-093

1	PROTECTIVE RUBBER BEADING	25x50x200	1	REF.DRG.NO	RUBBER	
QTY.	DESCRIPTION	DIMENSIONS	ITEM NO.		MATL. & SPEC.	REMARKS
	PROTECTIVE RUBBER BEADING TO PREVENT EYE INJURY DURING STORAGE OF LHB ROOF ASSY.				Weight (kg)	0.05
					SCALE 1:1	SSE/D CHD S.L.NARAYANAN
					ALT -	ALTD DRN K.MURUGESAN
						INTEGRAL COACH FACTORY, CHENNAI - 600038
						ICF/J&T/SK-1867

ASSEMBLY DRAWINGS		
	10-07-21	AME/SME
DATE OF LATEST ALT.	DATE OF FIRST ISSUE	AME/SME