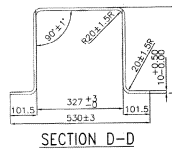


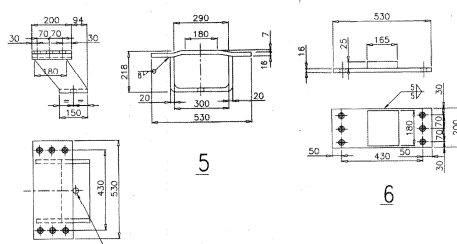
SECTION-AA




SECTION CC



S.No.	Characteristics
1	Flanges 101.5
2	Thickness $10^{+0.6}_{-0.5}$
3	Top width 327^{+8}_{-8}
4	Bottom width 530^{+1}_{-1}
5	Height 327^{+13}_{-13}
6	Radius ± 1.5
7	Angle $\pm 1^\circ$
8	Wallness 2 min
9	Bow 1 in 600. Max. bow in Horizontal Plane should be 5 mm.
10	Twist 1 in 600
11	Twist 1 deg./metre. Max. twist over entire length of section should be within 35 mm.



NOTE^③

17.5 DIA. HOLES FOR 16 DIA. RIVETS SHOWN THUS 

20.6 DIA. " " 20 DIA. " " "

23.5 DIA. " " 22 DIA. " " "

WHEREVER RIVETS ARE USED, ALTERNATIVELY SUITABLE SIZE WITH ACTUAL GRIP LENGTH
LOCK BOLTS MAY BE USED IN LIEU OF RIVETS.

(1)	-	WD-20061	REMARKS ARE ADDED FOR ALTERNATE USE OF COOL PANTS IN LBS. OF PANTS	12/20	<i>Barney</i>
(4)	1&3	WD-18002	IF 3 STD. PANTS POSITION SHOWN, IF 3 D.M. RECTIFIED BY 7 REPAIR ADDED	01/18	
(3)	3	WD-17016	IN IT. 3 HOLES & DIM. ADDED	2/17	
(2)	-	WD-18040	ENTERING PAD LOCATION CHANGED	8/16	
(1)	2	WD-18034	CENTERSILL SECTION CHANGED	8/16	
ALT.	ITEM	ADDS.	DESCRIPTION	DATE	ASST. DESG.

[illegible]