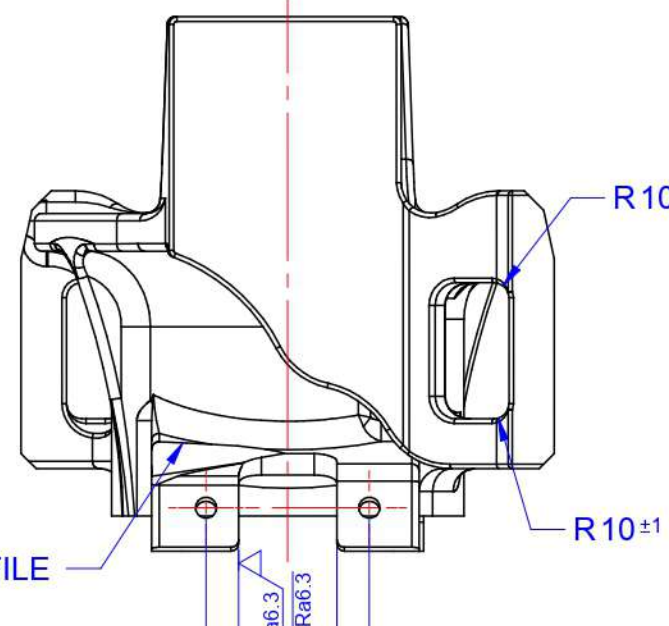
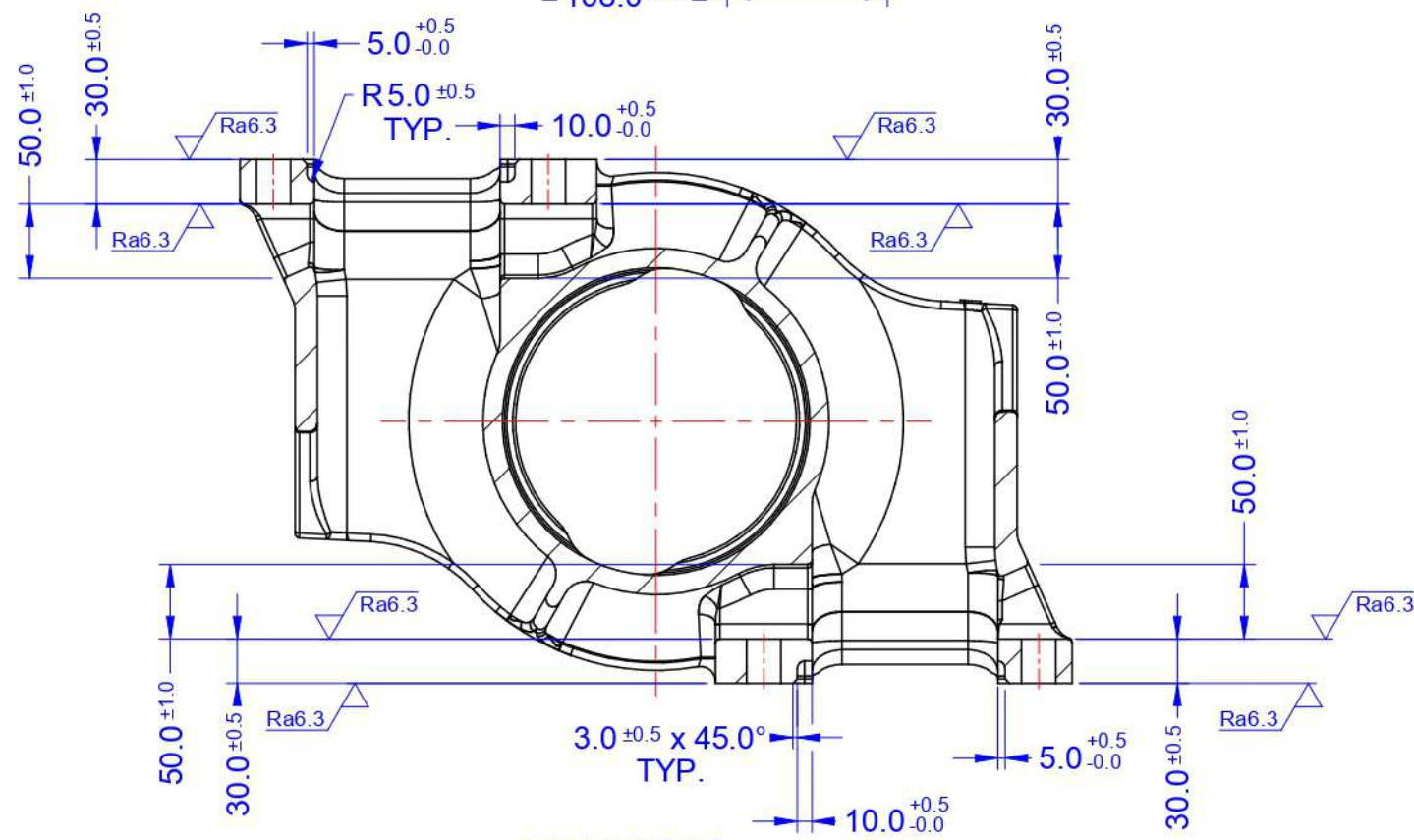


NOTES :
01. MATERIAL : REFER TO THE RESPECTIVE DRAWING IN THE TABLE
02. INTERNAL SURFACE ROUGHNESS OF ALL DRILLED HOLES : Ra12.5
03. FOLLOWING IDENTIFICATION DETAILS SHALL BE SUITABLY ENGRAVED ON OUTER SURFACE AS SHOWN
IN 6mm HEIGHT LETTERS.
MM YY - MONTH AND YEAR OF MANUFACTURE (LAST TWO DIGITS ONLY)
04. REMOVE ALL SHARP EDGES AND BURRS
05. FINISH : 02
A) PROPER MASKING SHOULD BE DONE ACCORDING TO PAINTING INSTRUCTIONS
B) PRETREATMENT: SHOT/GRIT/SAND BLASTING ACCORDING TO ISO:8501, Sa 2.5 AS PER ICF/MD/SPEC-299
C) PRIMER: HIGH PERFORMANCE ANTI CORROSION EPOXY COATING(TWO PACK) HAVING COLOUR GREEN
WITH DFT OF 125⁺²⁰ MICRONS TO BE DONE AS PER RSO SPEC NO.M&C/PCN/123/2018
D) PRIMER, INTERMEDIATE & TOP COATS MUST BE COMPLY TO FIRE SAFETY STANDARD EN 45545 - HL3-R7
E) INTERMEDIATE COAT : FLUOROPOLYMER (FLUOROETHYLENE) WITH DFT OF 30⁺¹⁰ MICRONS
TO BE DONE AS PER JAPANESE INDUSTRIAL STANDARD JIS K 5659:2008
F) TOP COAT : FLUOROPOLYMER (FLUOROETHYLENE) WITH DFT OF 25⁺¹⁰ MICRONS WITH SHADE TO RAL-7012(BASALT GREY) TO BE
DONE AS PER JAPANESE INDUSTRIAL STANDARD JIS K 5659:2008-CLASS-1
G) MACHINED AREAS/MACHINED COMPONENTS, WHICH DON'T REQUIRE PRIMER OR PAINT,
SHOULD BE PROTECTED AGAINST CORROSION WITH SUITABLE CORROSION PREVENTIVE
COATING, WHICH IS REMOVABLE EASILY AND SUITABLE PACKING SHOULD BE DONE SO AS TO AVOID ANY POSSIBILITY OF DAMAGE DURING TRANSIT
06. PRESERVATION MEASURES : COMPONENT SHOULD BE PRESERVED IN THE MOISTURE FREE
AND DUST LESS ZONE
07. ENSURE ALL THREADED / TAPPED PORTION ARE MASKED 02

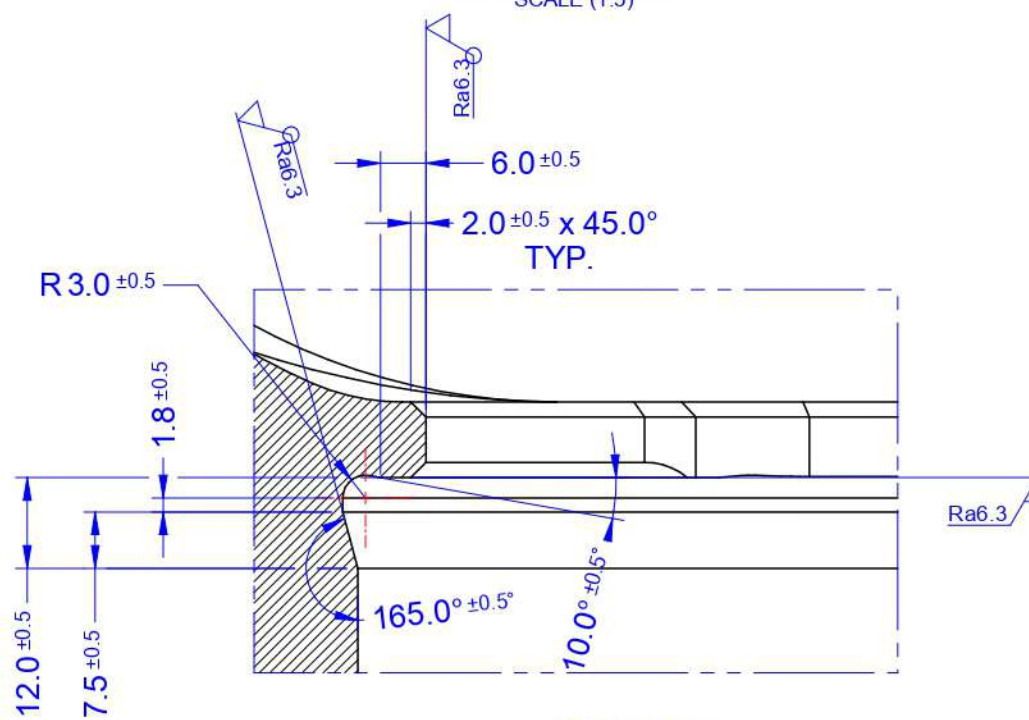
DETAIL-D
SCALE (1:3)



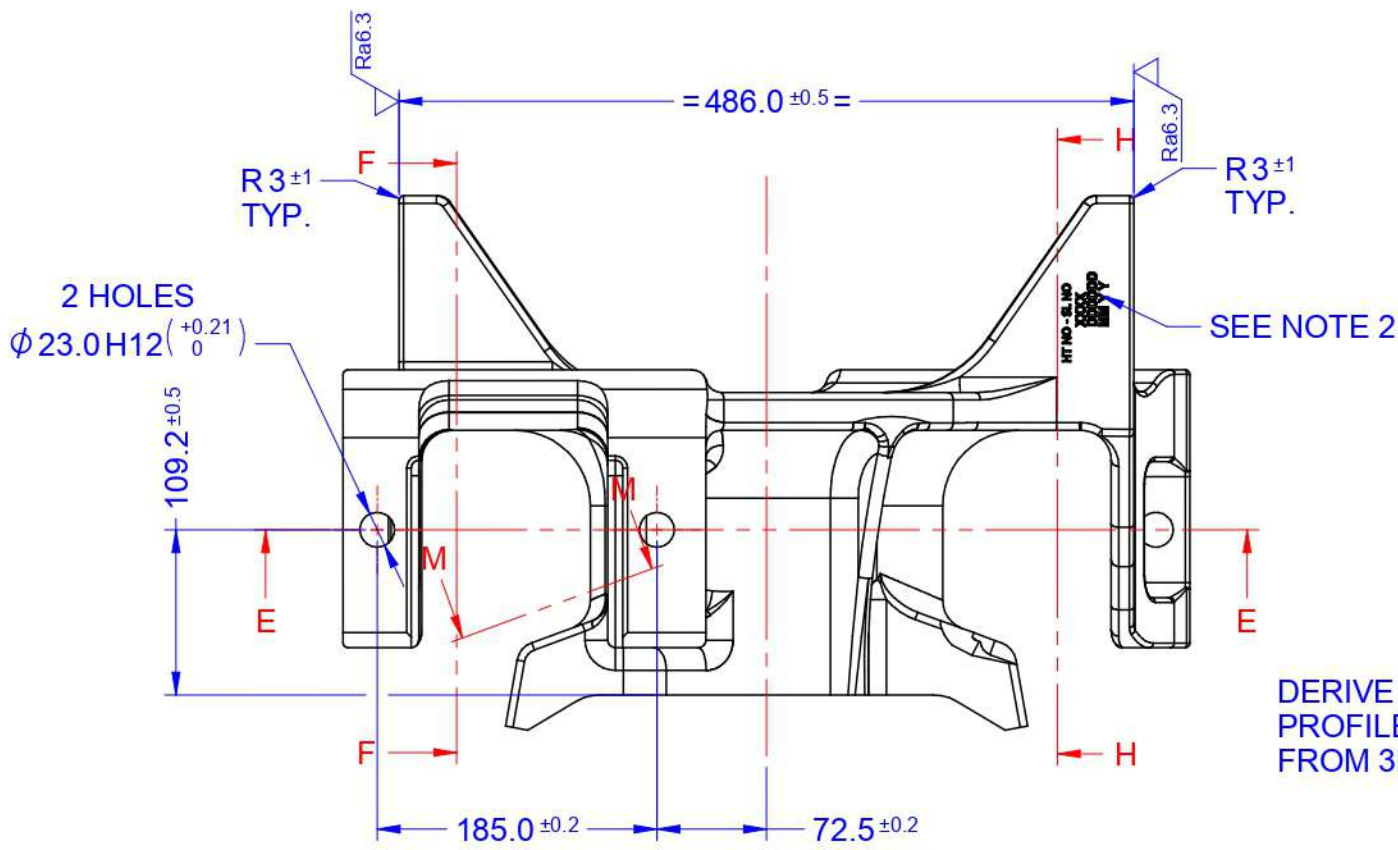
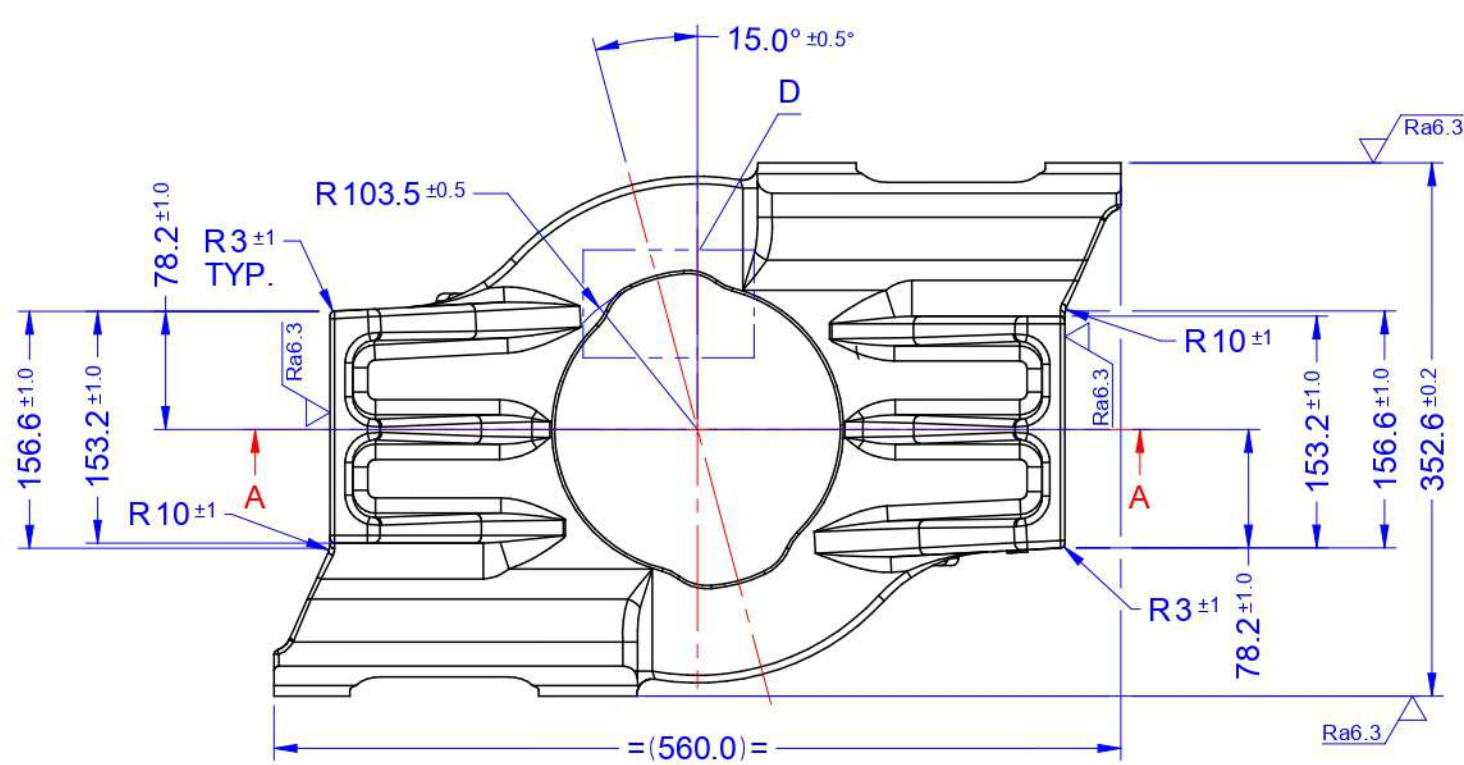
DERIVE THIS PROFILE
FROM 3D MODEL



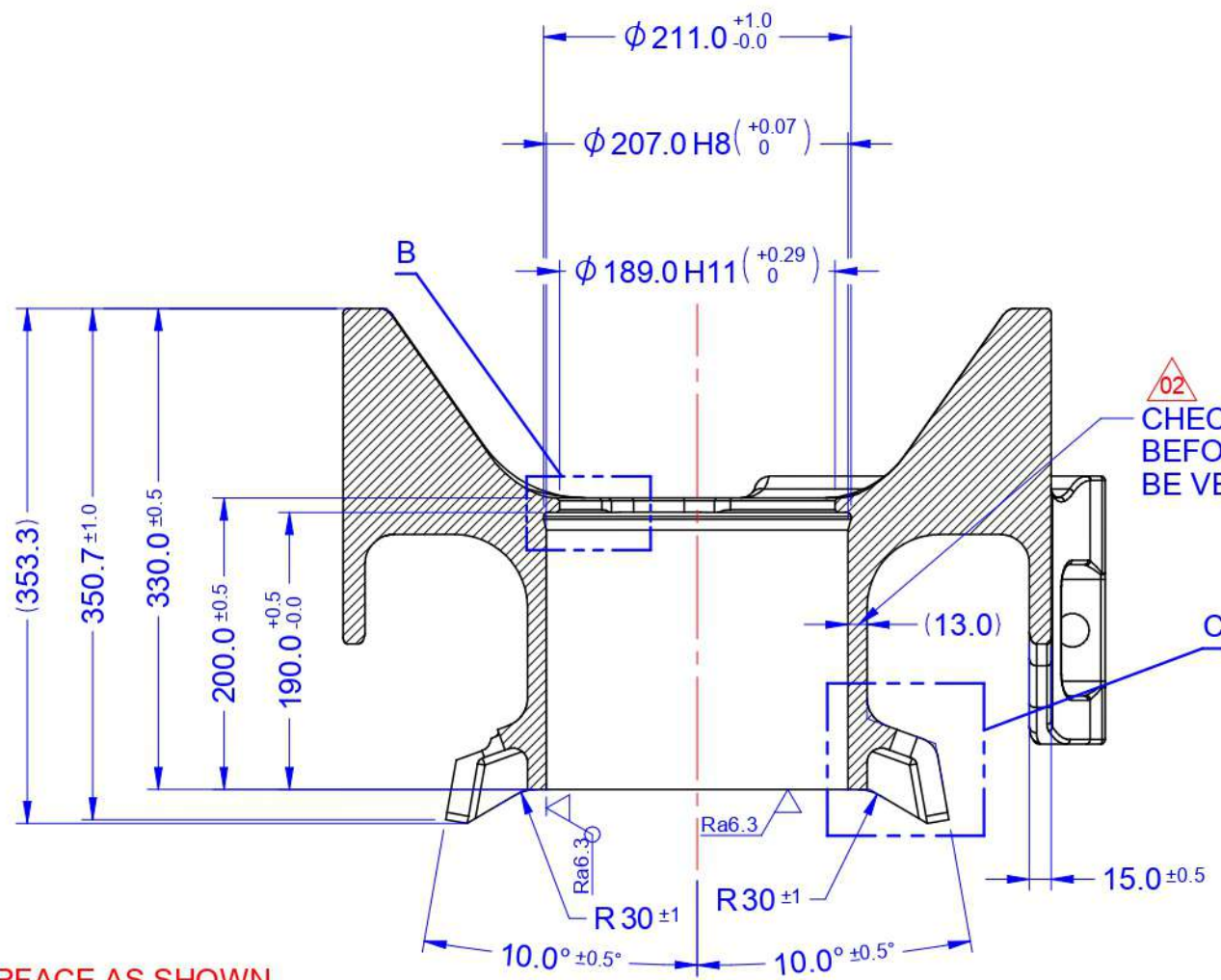
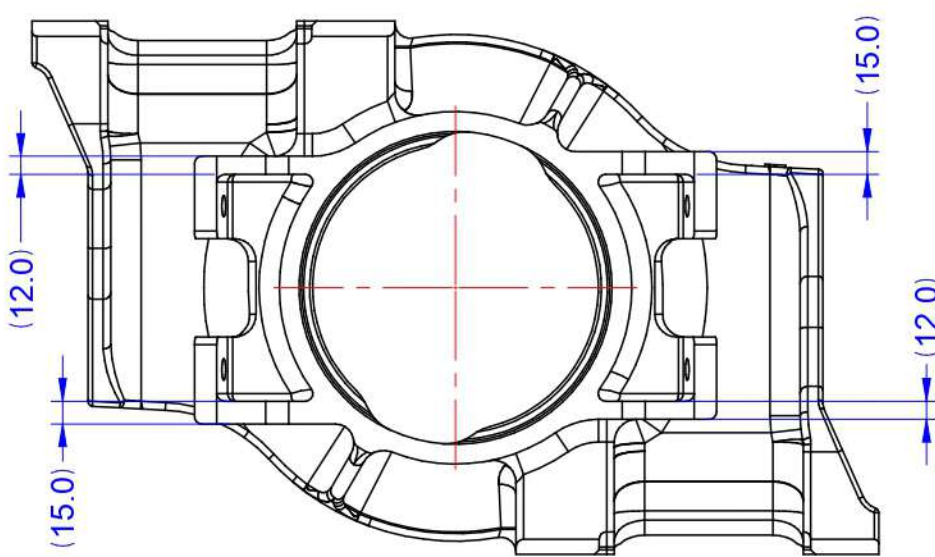
SECTION E-E
SCALE (1:5)



DETAIL-B
SCALE (1:1)

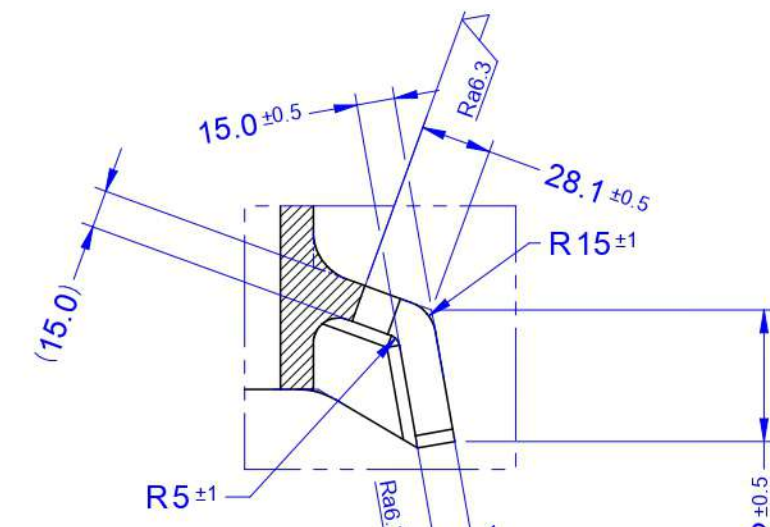


DERIVE THIS PROFILE
FROM 3D MODEL

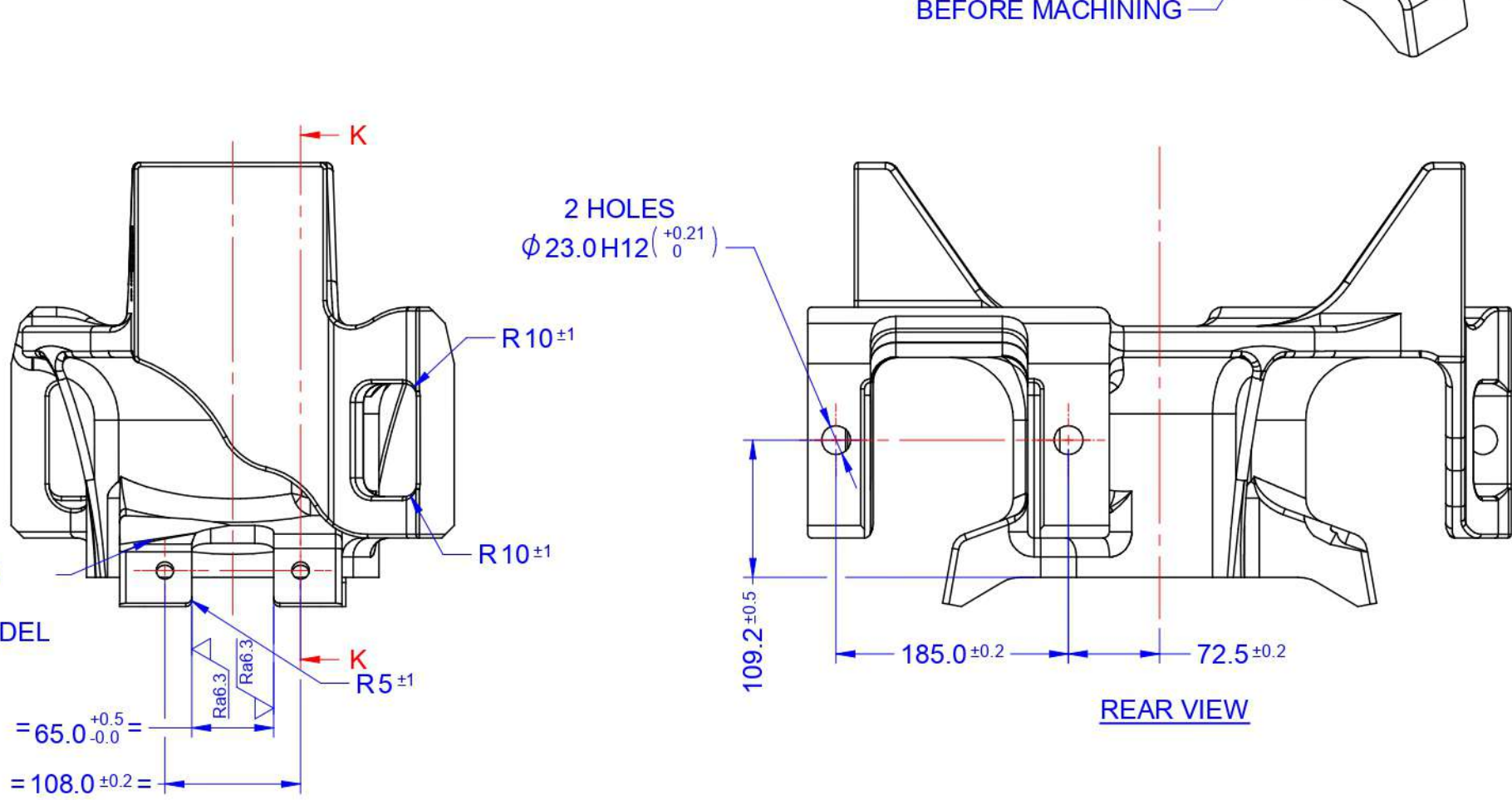


SECTION A-A
SCALE (1:5)

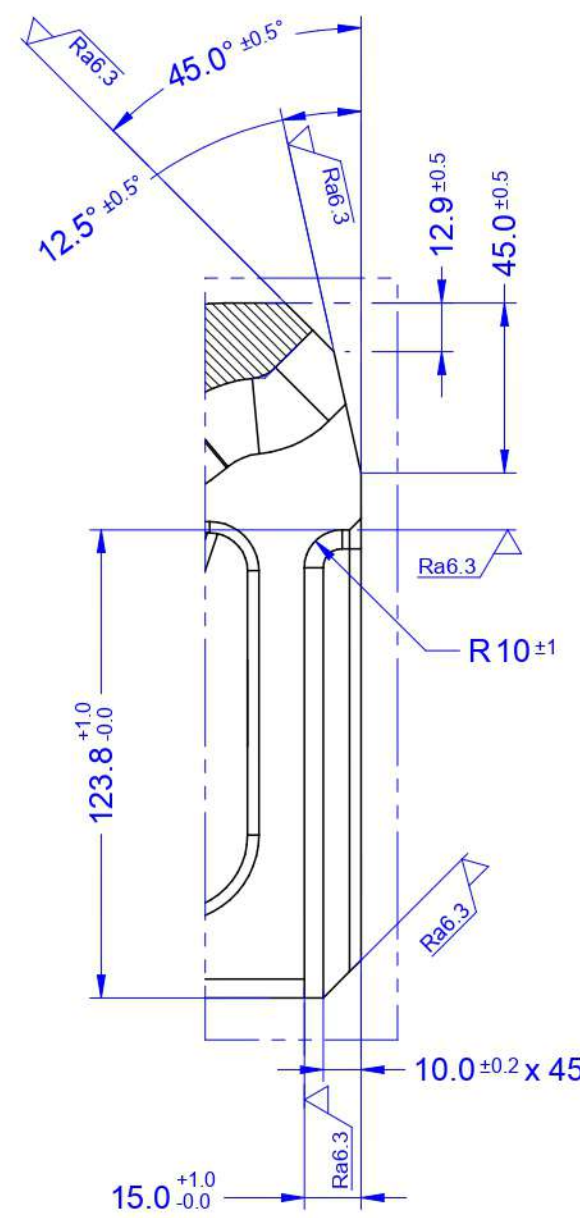
CHECK FOR WALL THICKNESS
BEFORE MACHINING & SHOULD
BE VERIFIED BY QC



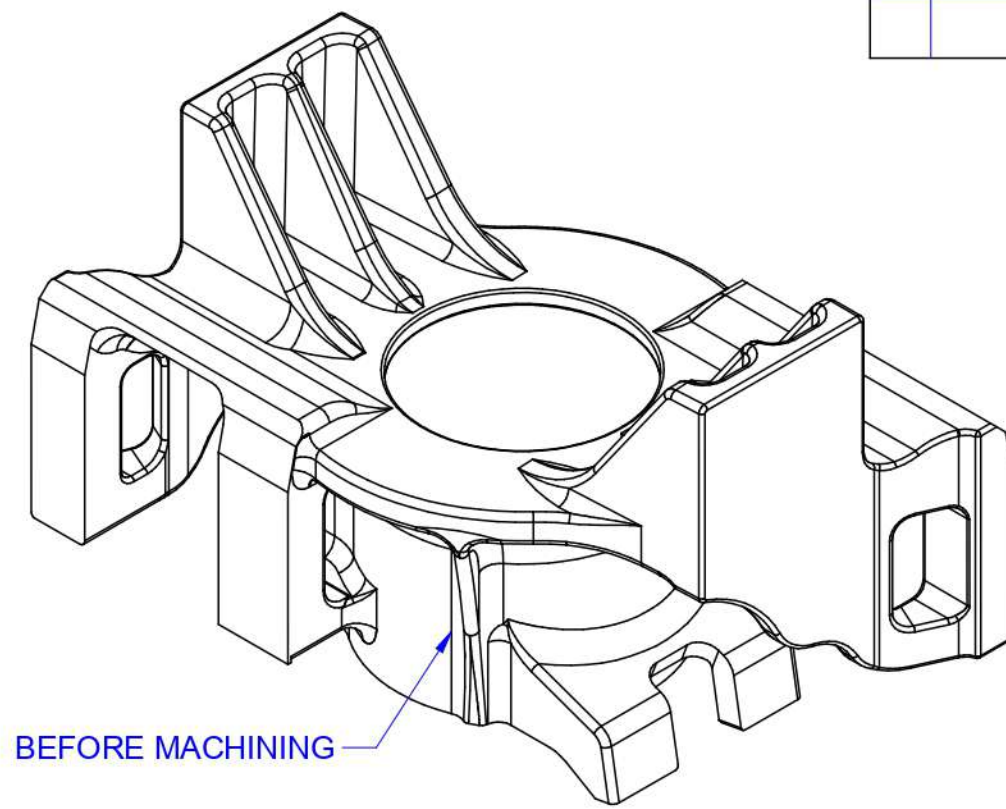
DETAIL-C
SCALE (1:3)



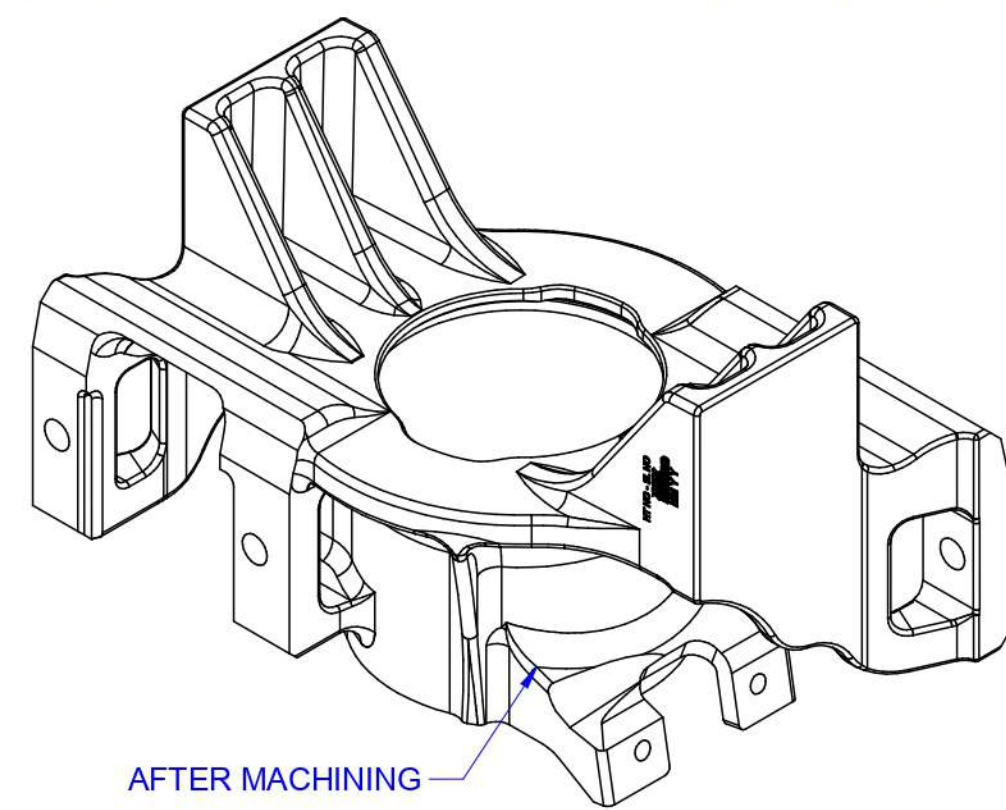
REAR VIEW



DETAIL-G
SCALE (1:2)

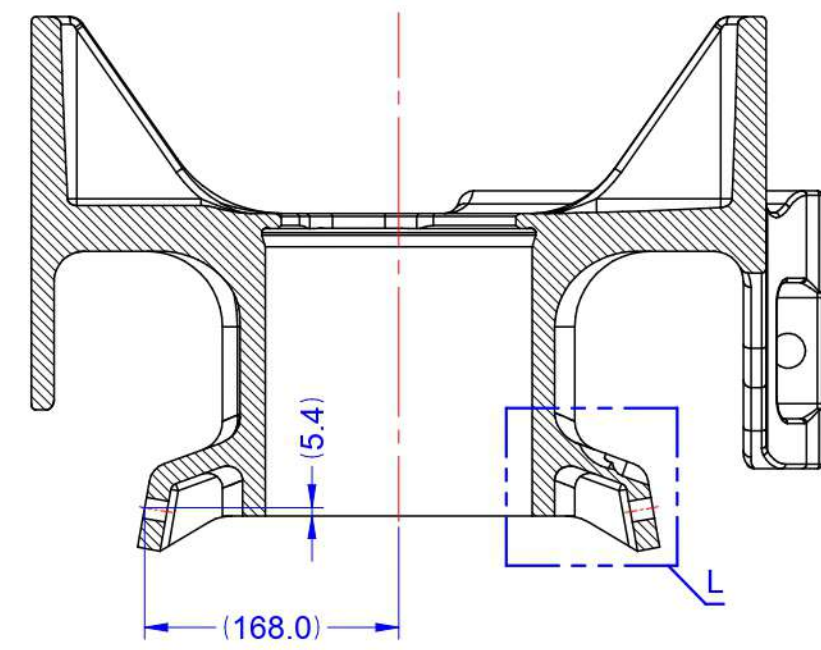


BEFORE MACHINING

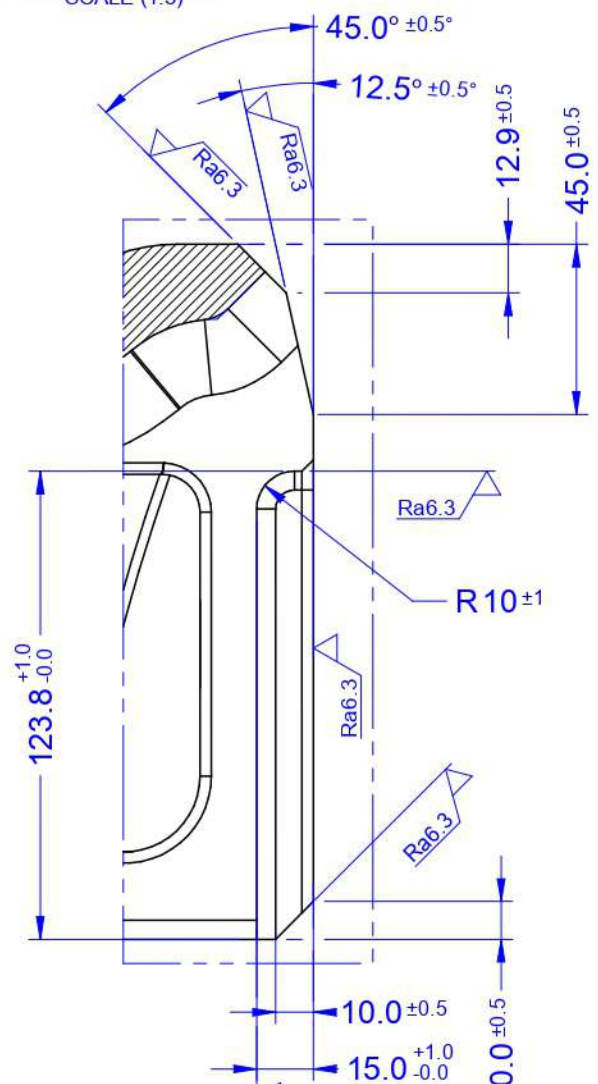


AFTER MACHINING

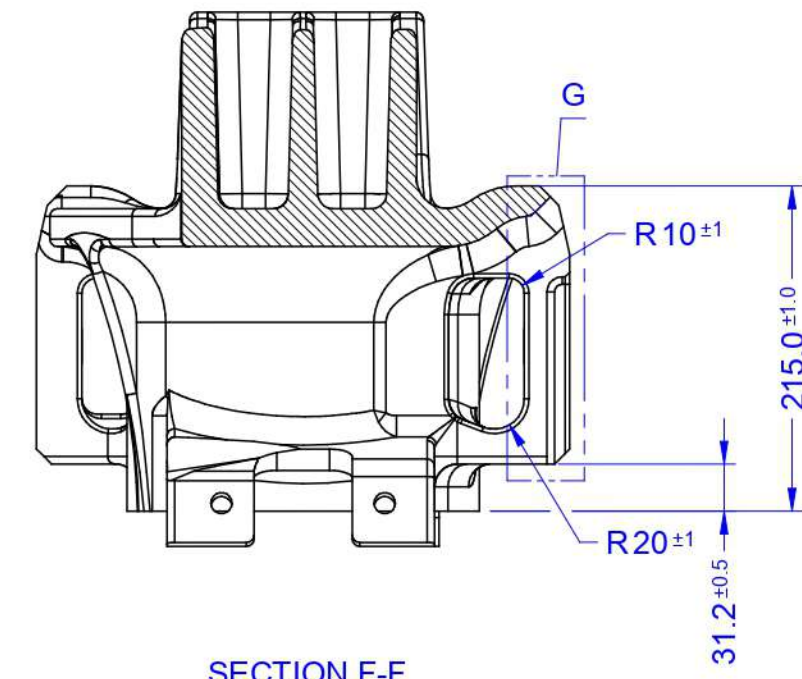
3D VIEW



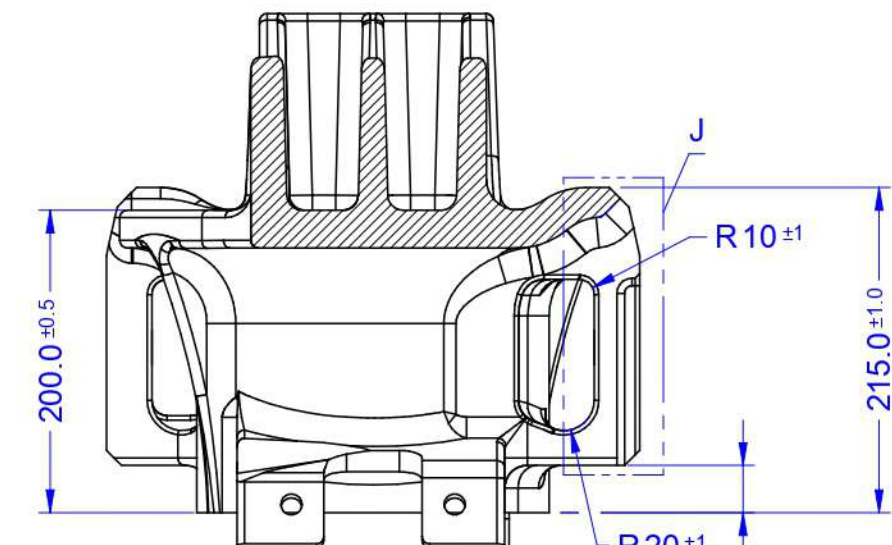
SECTION K-K
SCALE (1:5)



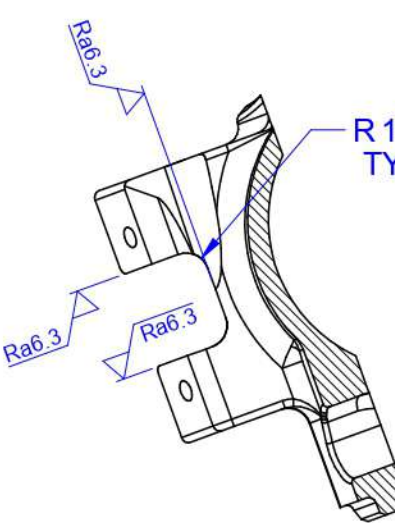
DETAIL-J
SCALE (1:2)



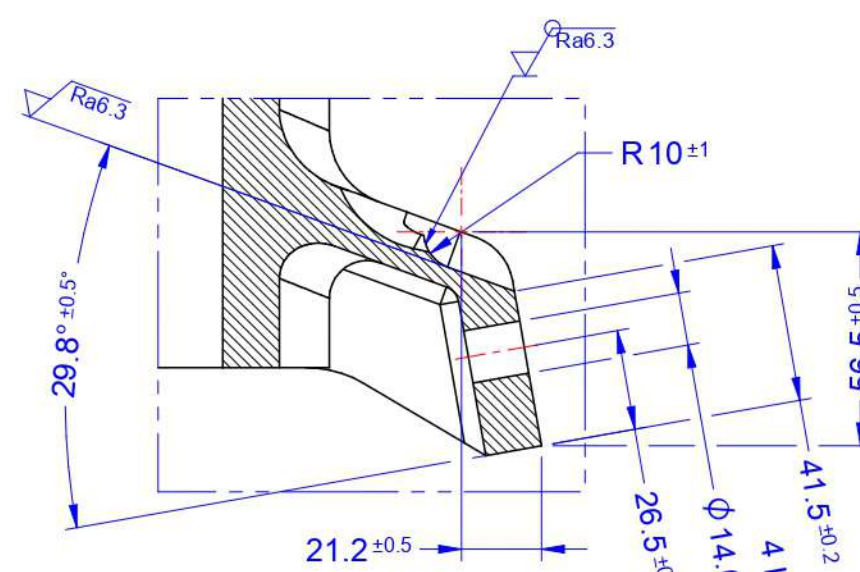
SECTION F-F
SCALE (1:5)



SECTION H-H
SCALE (1:5)



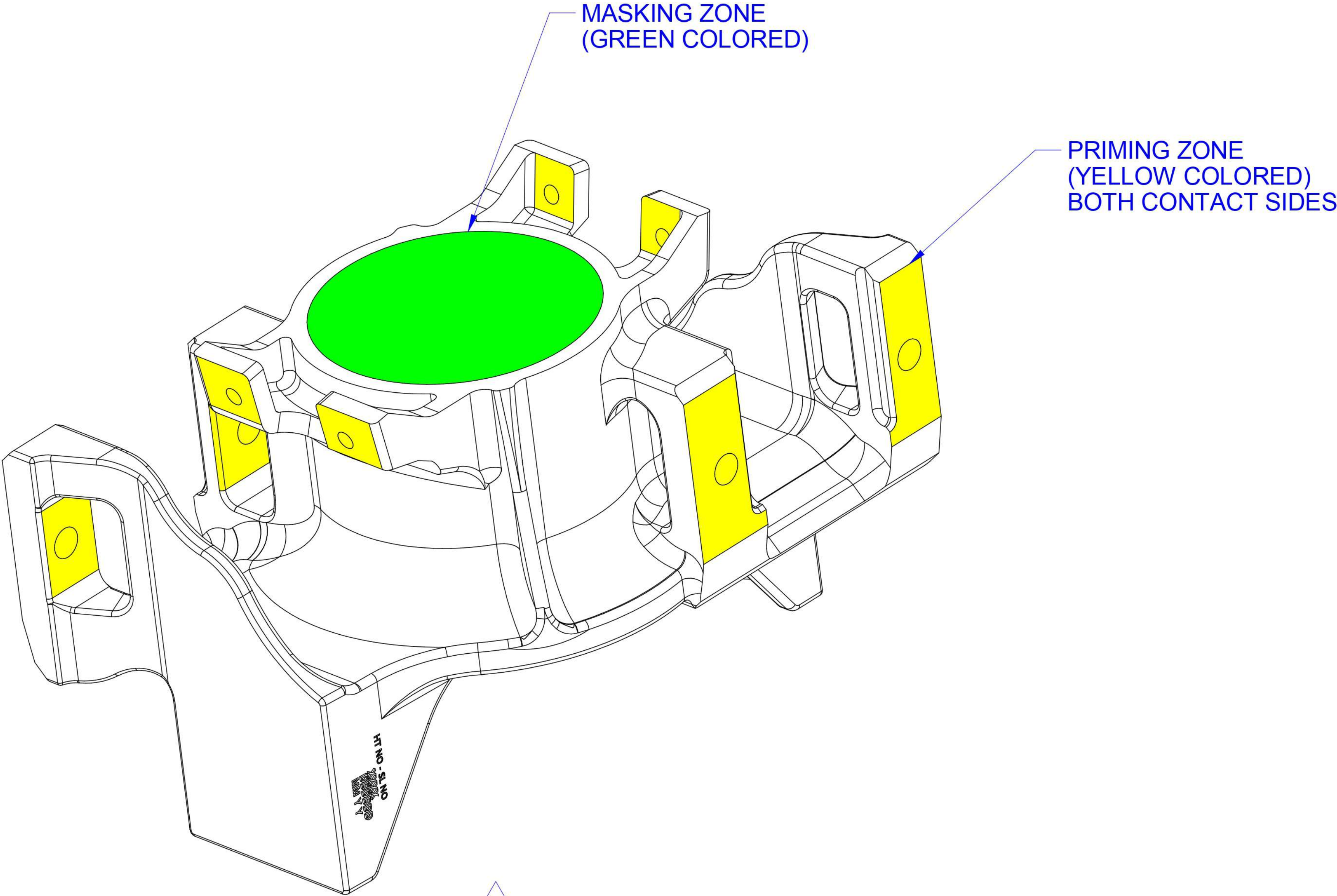
SECTION M-M
SCALE (1:5)



DETAIL-L
SCALE (1:2)

1	D-A675UV2-137351	TRACTION CENTER _CASTING - A675UV2	G24Mn6+QT2	1	80.158 kg
S.NO	DRG.NO / SAP CODE	DESCRIPTION	MATERIAL	QTY	MASS (QTY)
TITLE: TRACTION CENTER _MACHINED - A675UV2					D-A675UV2-137352
DRAWING NO: D-A675UV2-137352					
UNLESS SPECIFIED: - ALL DIMENSIONS ARE IN mm - ALL MASSES ARE IN kg - AREA IN cm ² - DO NOT MEASURE DIMENSIONS FOR MFG - AREA & MASS VALUES ARE FOR REF ONLY - DRAWING MUST BE MODIFIED IN 3D ONLY					
DRAWN	M.S.MADHU	M.S.MADHU	02.09.2021	REV	02
CHECKED	SRIKANTH.P	SRIKANTH.P	02.09.2021	PROJECTION	1
APPROVED	BOCR	BOCR	02.09.2021	SHEET	1/2
AREA:	9265 cm ²	MASS:	71.309 kg	SCALE:	1:5
MEDHA SERVO DRIVES PVT. LTD., P-4/SB, IDA, NACHARAM, HYDERABAD - 500 076, INDIA.					

REV	ECR.NO.	ZONE	REVISION	DATE	REVISED	CHKD.	APPD.
01	0322-043843-M	E2, E8, E9, K10	DIMENSIONS 65.0, 28.1, R5 AND R15 ARE ADDED	24.01.2021	M.S.MADHU	SRIKANTH.P	BOCR
02	0622-046160-M	J7	INSTRUCTIONS ABOUT PAINTING IN SHEET 2, SEE NOTES INSTRUCTIONS ABOUT MINIMUM WALL THICKNESS ADDED	18.08.2021	AJAY.D	SRIKANTH.P	BOCR



02

"PAINTING INSTRUCTIONS"

- 02
- NOTES :
01. MATERIAL : REFER TO THE RESPECTIVE DRAWING IN THE TABLE
02. INTERNAL SURFACE ROUGHNESS OF ALL DRILLED HOLES : Ra12.5
03. FOLLOWING IDENTIFICATION DETAILS SHALL BE SUITABLY ENGRAVED ON OUTER SURFACE AS SHOWN
IN 6mm HEIGHT LETTERS.
MM YY - MONTH AND YEAR OF MANUFACTURE (LAST TWO DIGITS ONLY)
04. REMOVE ALL SHARP EDGES AND BURRS
05. FINISH : 02
- A) PROPER MASKING SHOULD BE DONE ACCORDING TO PAINTING INSTRUCTIONS
- B) PRETREATMENT: SHOT/GRIT/SAND BLASTING ACCORDING TO ISO:8501, Sa 2.5 AS PER ICF/MD/SPEC-299
- C) PRIMER: HIGH PERFORMANCE ANTI CORROSION EPOXY COATING(TWO PACK) HAVING COLOUR GREEN
WITH DFT OF 125⁺²⁰₀ MICRONS TO BE DONE AS PER RSO SPEC NO.M&C/PCN/123/2018
- D) PRIMER, INTERMEDIATE & TOP COATS MUST BE COMPLY TO FIRE SAFETY STANDARD EN 45545 - HL3-R7
- E) INTERMEDIATE COAT : FLUOROPOLYMER (FLUOROETHYLENE) WITH DFT OF 30⁺¹⁰₀ MICRONS
TO BE DONE AS PER JAPANESE INDUSTRIAL STANDARD JIS K 5659:2008
- F) TOP COAT : FLUOROPOLYMER (FLUOROETHYLENE) WITH DFT OF 25⁺¹⁰₀ MICRONS WITH SHADE TO RAL-7012(BASALT GREY) TO BE
DONE AS PER JAPANESE INDUSTRIAL STANDARD JIS K 5659:2008-CLASS-1
- G) MACHINED AREAS/MACHINED COMPONENTS, WHICH DON'T REQUIRE PRIMER OR PAINT,
SHOULD BE PROTECTED AGAINST CORROSION WITH SUITABLE CORROSION PREVENTIVE
COATING, WHICH IS REMOVABLE EASILY AND SUITABLE PACKING SHOULD BE DONE SO AS TO AVOID ANY POSSIBILITY OF DAMAGE DURING TRANSIT
06. PRESERVATION MEASURES : COMPONENT SHOULD BE PRESERVED IN THE MOISTURE FREE
AND DUST LESS ZONE
07. ENSURE ALL THREADED / TAPPED PORTION ARE MASKED. 02

TITLE: TRACTION CENTER _ MACHINED - A675UV2					DRAWING NO: D-A675UV2-137352	
UNLESS SPECIFIED: - ALL DIMENSIONS ARE IN mm - ALL MASSES ARE IN kg - AREA IN cm ² - DO NOT MEASURE DIMENSIONS FOR MFG - AREA & MASS VALUES ARE FOR REF ONLY - DRAWING MUST BE MODIFIED IN 3D ONLY	DRAWN M.S.MADHU	CHECKED SRIKANTH.P	APPROVED BOCR	SCALE 1:1	REV. 02 PROJECTION 	 MEDHA
AREA: 9265 cm²	MASS: 71.309 kg	SHEET: 2/2	MEDHA SERVO DRIVES PVT. LTD., P-4/SB, IDA, NACHARAM, HYDERABAD - 500 076, INDIA.			