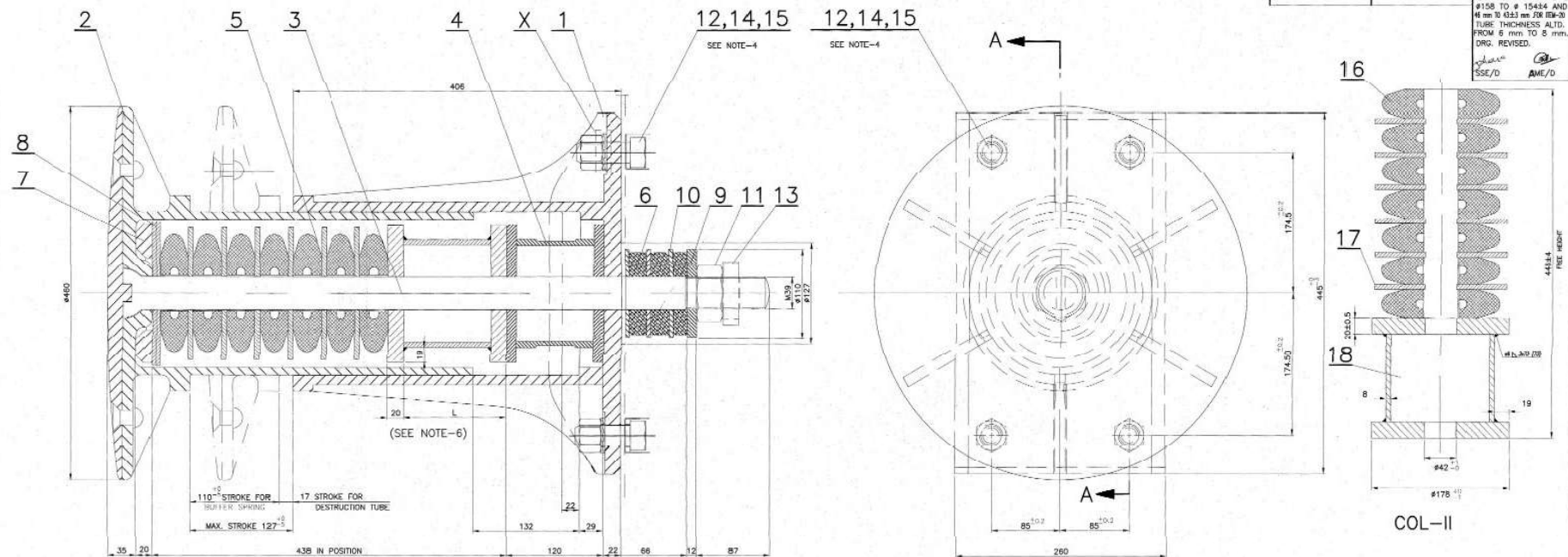


3968724/2024/CH.OS/MECH/MM/HQ/SR



MANUFACTURE'S NAME, MONTH & YEAR  
BY NON ENGRAVE INK USING LASER/PRINTING  
MACHINE ON EACH POLYMER SPRING PAD &  
POLYMER RECOIL SPRING.

SECTION-AA

MANUFACTURE'S NAME, MONTH & YEAR  
BY NON ENGRAVE INK USING LASER/PRINTING  
MACHINE ON EACH POLYMER SPRING PAD &  
POLYMER RECOIL SPRING.

DETAIL AT - X

## NOTE:-

- MANUFACTURER SHOULD COMPLY WITH STR. NO. ICF/MO/SPEC-252
- ITEM-15, INTER LOCK WASHER SHALL BE COATED/PLATED WITH ENVIRONMENTAL FRIENDLY COATING AND TO BE SUPPLIED IN SEMIPERMANENT GLUED CONDITION FOR EASY INSTALLATION.
- POLYMER BUFFER SPRING ASSY. PACK (ITEM-5) SHALL BE PROCURED FROM RDSO APPROVED SOURCES OF BG LOCOMOTIVE: MP-0.41.00.07 ONLY.
- ITEM-12 & 14 TO BE PROCURED FROM BRANDED SOURCES - 'TYS' OR 'UNBRAKO' OR 'DOW' OR 'LPS'.
- ITEM-15 HAS TO BE FASTENED KEEPING CUT FACES TOGETHER AS SHOWN AT DETAIL 'X'.
- LENGTH OF THE SPACER HAS TO BE DECIDED BY THE MANUFACTURER AS PER REQUIREMENT SPECIFICATION.

No. of ASSY. REQUIRED PER COACH			
COACH	COL-I	COL-II	COL-III
ALL BG COACHES	4	-	-

1	TUBE	8x140xL	20	S-2062/11		
2	PLATE	20x42x178	9	S-2062/11		
3	SPACER		8	ICF/STD		COL-3
4	PARTING PLATE	5x42x178	7	2-2-015		
5	POLYMER SPRING ELEMENTS 43x42x154		6	S-2062/11		GALV.
6	INTER-LOCK WASHER SUITABLE FOR		5	ICF/MO/SPEC-353		
7	MMS/TPE-OSC LOCK/NORD LOCK/DURLOCK		4	S-7002-1991		(REFER NOTE-2&5)
8	PREVAILING TORQUE TYPE NUT M24		3	2-2-2-605		PHOSPHATE COATED
9	SPLIT COTTER		2	S-1364-2002		
10	HEX. BOLT M24x90		1	2-2-2-008		GALV.
11	HEX. NUT - M39		10	W/BO-2253		
12	RECOIL SPRING PARTING PLATE		9	W/BO-350		
13	RECOIL SPRING WASHER		8	ICF/STD		
14	BUFFER SPRING PARTING PLATE		7	2-2-011		
15	WASHER		6	T-2-2-602		ITEM-1
16	BUFFER RECOIL SPRING		5	ICF/MO/SPEC-353		
17	POLYMER BUFFER SPRING ASSY. PACK		4	ICF/STD		COL-2
18	DESTRUCTION TUBE		3	T-2-2-602		
19	BUFFER SPINDLE		2	ICF/STD		
20	BUFFER PLUNGER ASSY.		1	T-2-2-005		
21	BUFFER CASING		1	T-2-2-606		

No.	QTY	DESCRIPTION & DIMENSIONS	ITEM	DEF.	ORIG.	MATL.	SPZ.	WEIGHT/UNIT	REMARKS
GROUP 2-2 BUFFER GEAR COMPLETE									
SIDE BUFFER ARRGT. WITH POLYMER SPRING PACK									
SUPERSEDED BY:									
SCALE: 1:2.5									
SHEET 1 OF 1									

REF. SPEC:

ASSEMBLY DRAWINGS

3-1-12-2-018

DATE OF LATEST ALN. DATE OF FIRST ISSUE

SME/AME

DATA

CODE NO

140

INDIAN RAILWAY

STANDARDS

SHEET

1 OF 1

ICF/STD-2-2-015

FORM IR AT 840 x 800