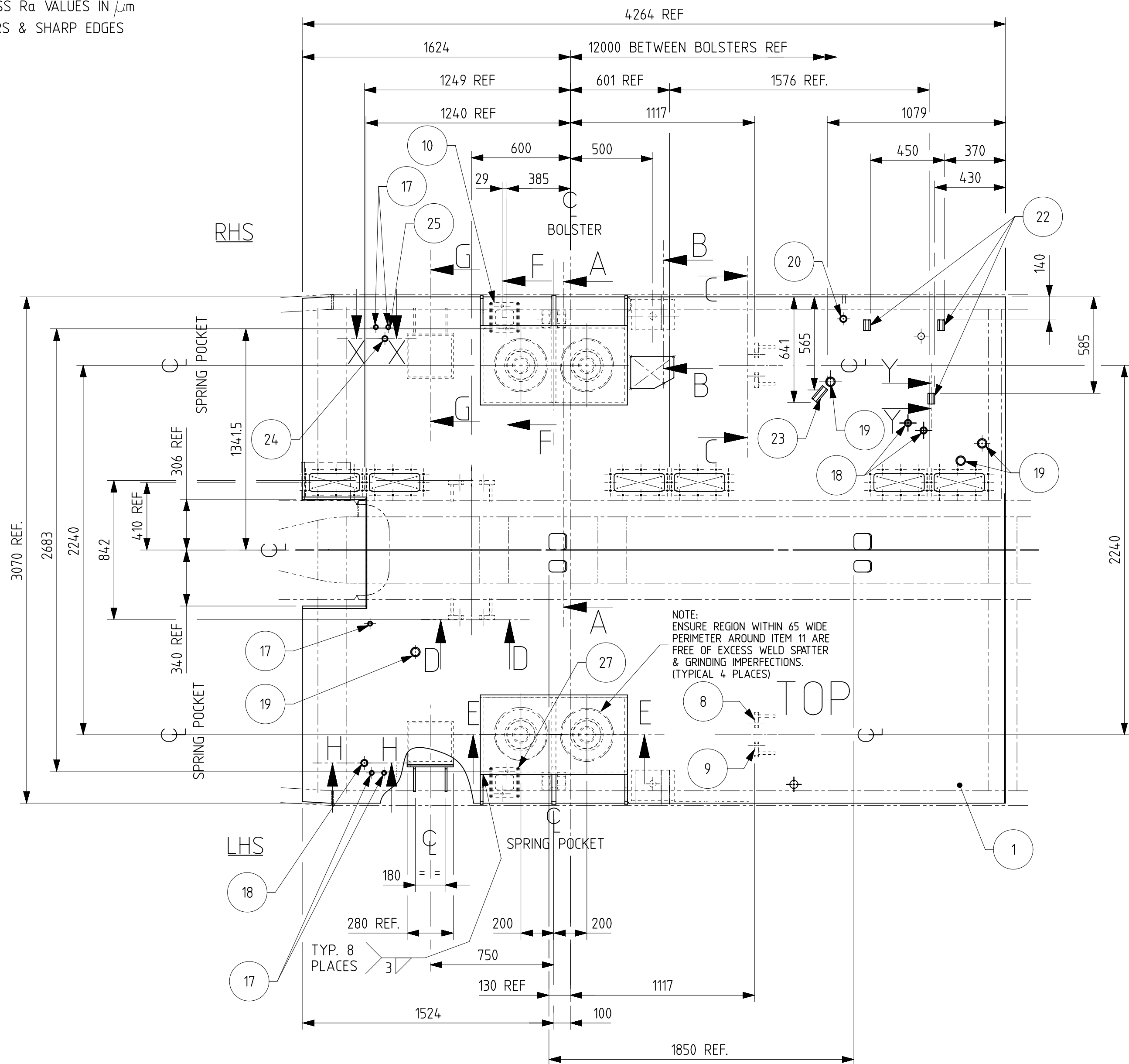
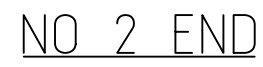
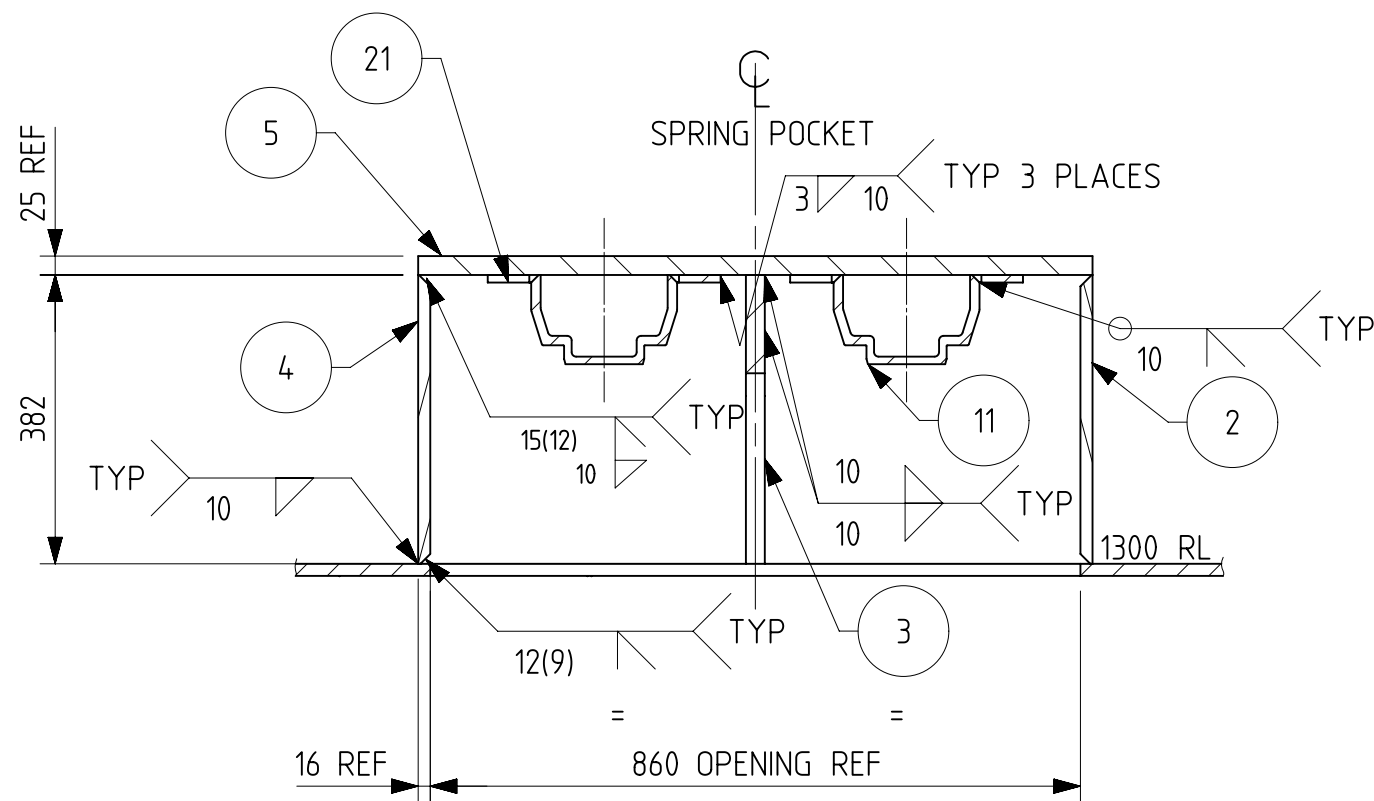


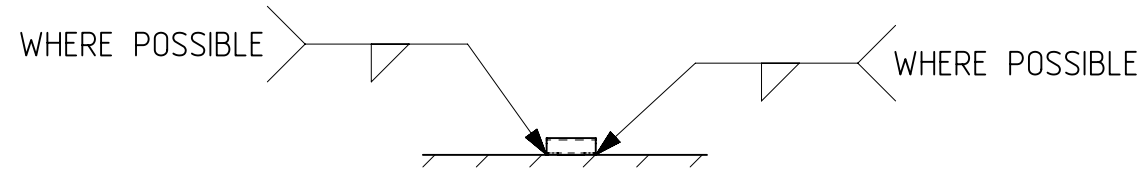
SURFACE ROUGHNESS Ra VALUES IN μm
REMOVE ALL BURRS & SHARP EDGES



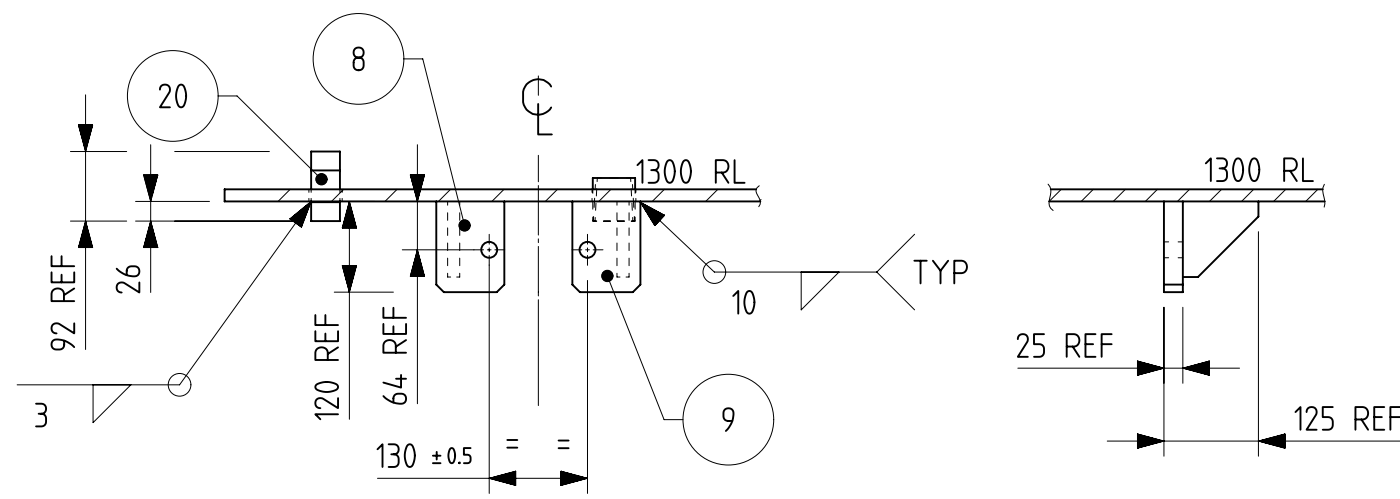
PLAN



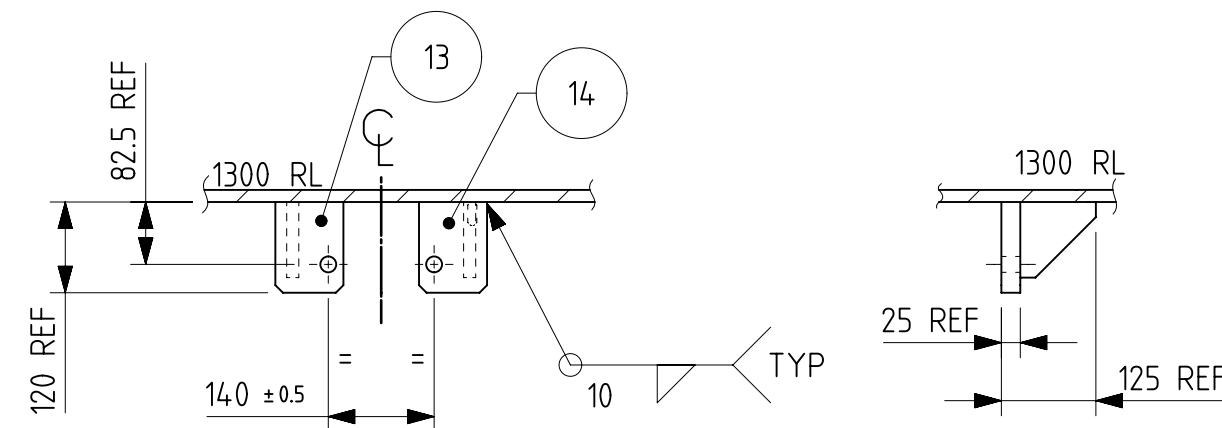
SECTION E-E
SCALE 1:10



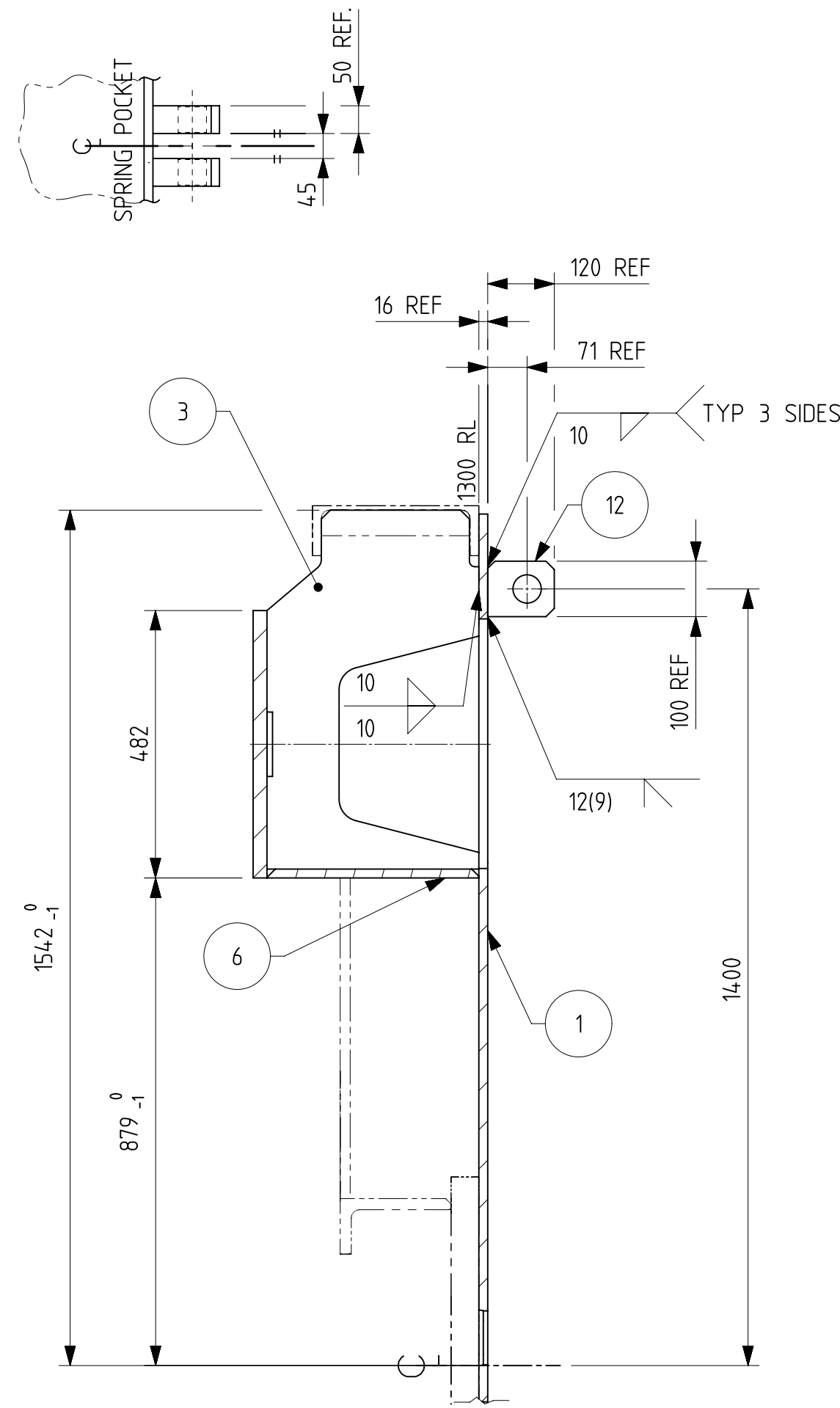
SECTION Y-Y
SCALE 1:10
UNISTRUT INSTALLATION
TYP



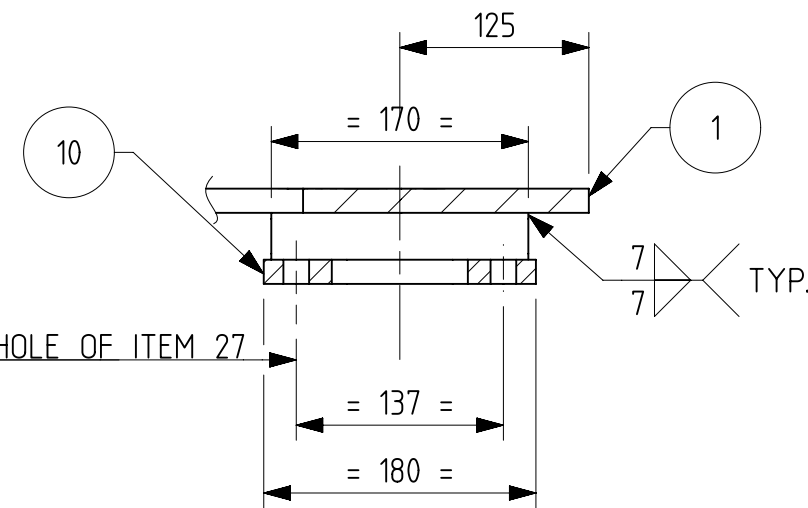
SECTION C-C
ROTATED 90° ACW
SCALE 1:10



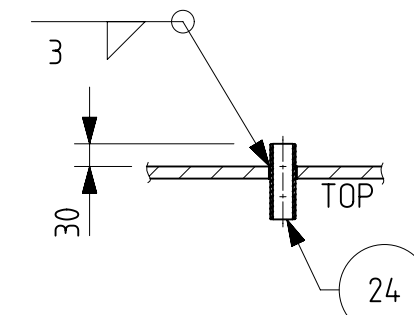
SECTION D-D
TYP 2 PLACES
SCALE 1:10



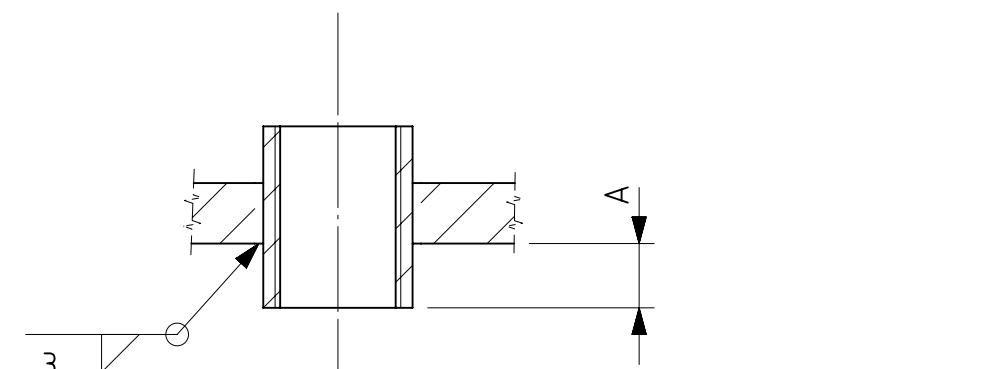
SECTION A-A
SCALE 1:10



SECTION F-F
SCALE 1:5



SECTION X-X
SCALE 1:10

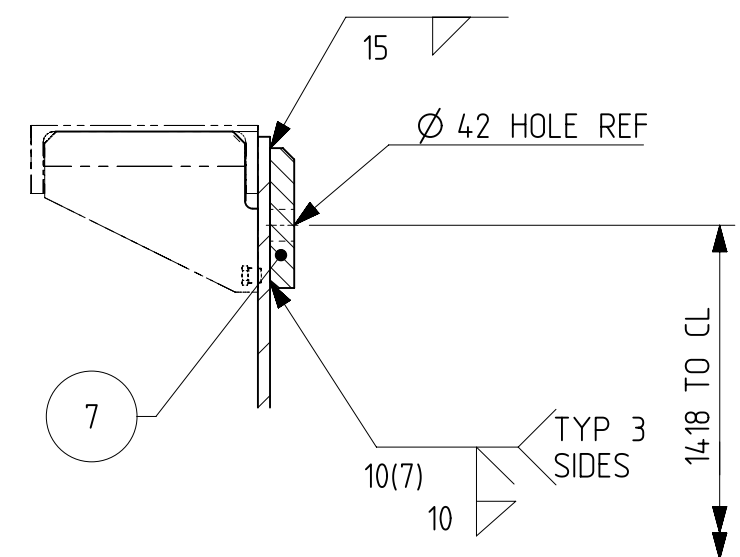


SECTION H-H
SCALE 1:2
TYP 14 PLACES. NTS

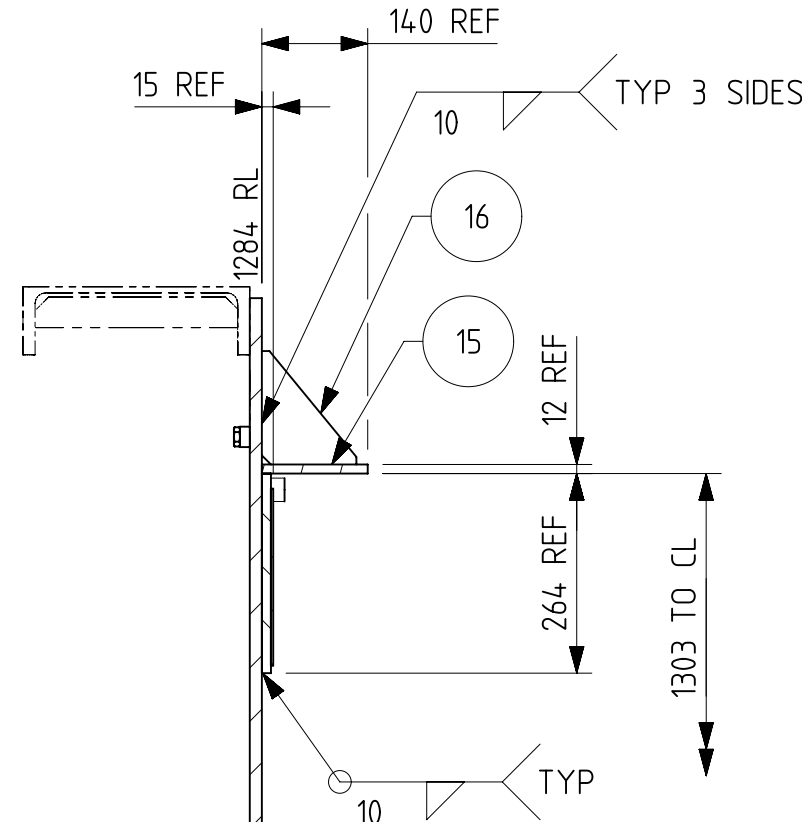
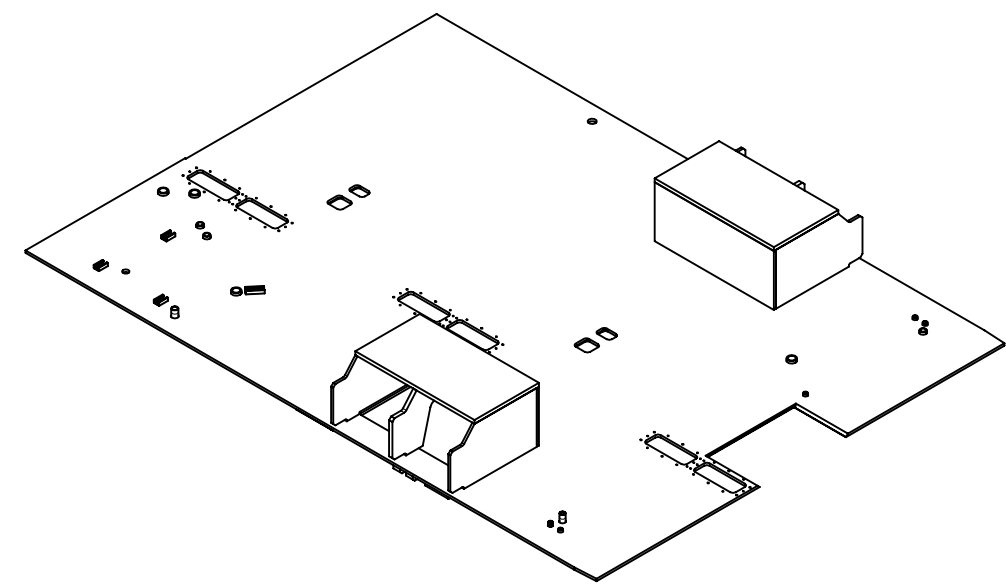
1. ALL DIMENSIONS ARE IN mm
2. C&D NO. T302/067
3. QTY./LOCO: 1 NO.
4. NEXT LEVEL ASSEMBLY 1209-02.126-001
5. USED FOR LOCO WAG-9HC
6. UNSPECIFIED TOLERANCE IN THE DIMENSIONS MENTIONED AT DRAWINGS TO BE FOLLOWED AS PER IS:2102 (PART-1):1993 -TOLERANCE CLASS- MEDIUM OF TABLE - 1

NOTE:
WELDING SHALL BE IN ACCORDANCE WITH ASI554.1-1991 SP/ IS:812/ IS:814/ IS:822.

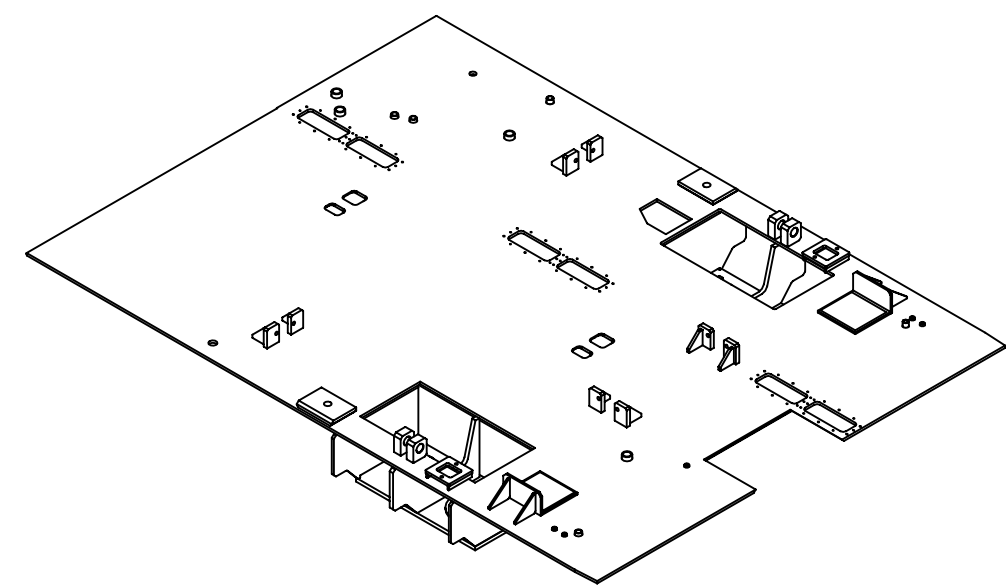
मा. भा. 819 / अ. मा. सं. 2853 WELDING SYMBOLS TO IS:813 / ISO:2553										अनिर्दिष्ट सार - सीमा मा. मा. : 2102 / अ. मा. सं. : 2788 UNSPECIFIED TOLERANCE: TO IS 202 / ISO / 2788 TOL. C.L.S										वर्णन BOLSTER ASSEMBLY (NO. 2 END)									
सतह - रूखाता का मान मा. भा. 3073 / अ. मा. सं. 1302 SURFACE ROUGHNESS VALUE TO IS:3073 / ISO:1302										परीक्षण संख्या 1 DYE/DED (CONV.) MODIFIED DESIGN OF BRACKET ASSEMBLY FOR VERTICAL DAMPER ARM ADDED AT REF. NO 10 & 27 28-46										अपेक्षित संख्या 1:20 DRAWING NO. 1209-02.126-006									
विवरण SYMBOL										प्राधिकार रचन DESCRIPTION ALI. NO. AUTHY										परिवर्तन संख्या सं. / REF. IB021-00350 ALI- 11 ड्राइंग संख्या 1 पर्चा SHEET 1 OF 1 A1									





SECTION B-B
SCALE 1:10



SECTION G-G
SCALE 1:10



1	27	T302/389	1209-02.426-368	BRACKET ASS'Y. FOR VERTICAL DAMPER FIXING AT END-1 L.H & END-2 R.H	1			4.10
	25	/	1209-18.406-055-001	PLUG HEXAGON 1/2" BSP	1	STEEL	IS:2062, Gr.C	—
	24	T302/100	1209-07.429-039-001	PIPE PIECE 1" THREADED x 100 LG	1	STEEL	IS:1239 Gr.Med	
	23	T302/099	1209-18.406-121-002	P3300HS CHANNEL UNISTRUT x 100 LG.	1		IS:5986 Fe-410	0.19
	22	T302/098	1209-18.406-121-001	P3300HS CHANNEL UNISTRUT x 65 LG.	3		IS:5986 Fe-410	0.12
	21	T302/097	1209-02.426-067	SPACING RING	4	STEEL	IS:2062:2011 Gr. E250 CU QUALITY-C, KILLED NORMALIZED	3.50
	20	T302/096	1209-02.426-158	SOCKET CONDUIT	1	STEEL	ASTM A 179 ANNEALED / IS:1239, Gr. MED	0.21
	19	T302/095	1209-18.406-233-004	SOCKET M/STEEL BSP THREAD	4	STEEL	ASTM A-108	0.33
	18	T302/094	1209-18.406-233-004	SOCKET M/STEEL BSP THREAD	3	STEEL	ASTM A-108	0.14
	17	T302/093	1209-18.406-233-002	SOCKET M/STEEL BSP THREAD	5	STEEL	ASTM A-108	0.06
1	16	T302/092	1209-02.426-035	GUSSET	4	STEEL	IS:2062:2011 GR-E-250 CU QUALITY-C KILLED NORMALISED	1.0
	15	T302/088	1209-02.326-032	BRACKET ASSEMBLY (BUMP SHOP)	2			12.1
	14	T302/086	1209-02.326-274	BRACKET R.H. (DAMPER)	2			2.9
	13	T302/083	1209-02.326-273	BRACKET L.H. (DAMPER)	2			2.9
	12	T302/082	1209-02.426-031	LUG	4	STEEL	IS:2062:2011 Gr. E250 CU QUALITY-C, KILLED NORMALIZED	3.8
	11	T302/118	1209-01.212-003	SPRING GUIDE	4	CASTING	DIN 17182 GS-20 Mn5(N)	7.4
	10	T302/390	1209-02.426-371	BRACKET ASS'Y. FOR VERTICAL DAMPER FIXING AT END-2 L.H & END-1 R.H	1			4.10
	9	T302/078	1209-02.326-025	BRACKET ASS'Y L.H.(DAMPER)	2			2.9
	8	T302/075	1209-02.326-022	BRACKET R.H. (DAMPER)	2	-		2.9
	7	T302/074	1209-02.326-021	LIFTING PAD	2	STEEL	IS:2062:2006 Gr. E-410(E-540)/ SAILMA 350H	11.3
	6	T302/073	1209-02.426-020	INNER PLATE (SPRING POCKET)	2	STEEL	IS:2062:2011 Gr. E250 CU QUALITY-C, KILLED NORMALIZED	42.8
	5	T302/072	1209-02.426-019	TOP PLATE (SPRING POCKET)	2	STEEL	IS:2062:2011 Gr. E250 CU QUALITY-C, KILLED NORMALIZED	84.4
	4	T302/071	1209-02.426-018	GUSSET L.H.(SPRING POCKET)	2	STEEL	IS:2062:2011 Gr. E250 CU QUALITY-C, KILLED NORMALIZED	29.1
	3	T302/070	1209-02.426-017	GUSSET MIDDLE (SPRING POCKET)	2	STEEL	IS:2062:2011 Gr. E250 CU QUALITY-C, KILLED NORMALIZED	29.4
	2	T302/069	1209-02.326-016	GUSSET R.H. (SPRING POCKET)	2	STEEL	IS:2062:2011 Gr. E250 CU QUALITY-C, KILLED NORMALIZED	29.1
	1	T302/068	1209-02.226-030	BOLSTER PLATE (NO 2 END)	1	STEEL	IS:2062:2011 Gr. E-250 CU QUALITY-C KILLED	1478.3
	निर्देश संख्या	खाना एवं विवरण	अंग आरेखण संख्या	वर्णन	मात्रा	पदार्थ	विधि	प्रति मात्र वि. प्र.
	REF. NO.	C&D NO.	PART DRG. NO.	DESCRIPTION	QTY.	MATL	SPECN	WT. EACH IN K.G.

 <div> <p>चितरंजन लोकोमोटिव वर्क्स, इंडिया</p> <p>CHITTARANJAN LOCOMOTIVE WORKS, INDIA</p> </div>			
जॉब नं.कार.सं. JOB NO.	RAJESH KUMAR RAJESH KUMAR	वर्ग CLASS	ड्राइंग नं. कार. DR. NO. IN RG.
चक्रवर्ति REVERSED AEE I SEE	चक्रवर्ति REVERSED AEE I SEE	विधि SPEC	2051.7
अनुमोदित चक्रवर्ति APPROVED BY	प्रमाण PROOF पट्टा PATER	वर्णन DESCRIPTION	
दिनांक DATE	08-10-20	BOLSTER ASSEMBLY (NO. 2 END)	
शिपक अनुमति SCALE	1:20	ओरिजिनल संख्या DRAWING NO.	1209-02.126-006
चक्रवर्ति / REF. IB021-00-350 A13- 11		परिवर्तित संख्या ALTERATION NO.	1 पृष्ठ SHEET
		1 OF 1	A1