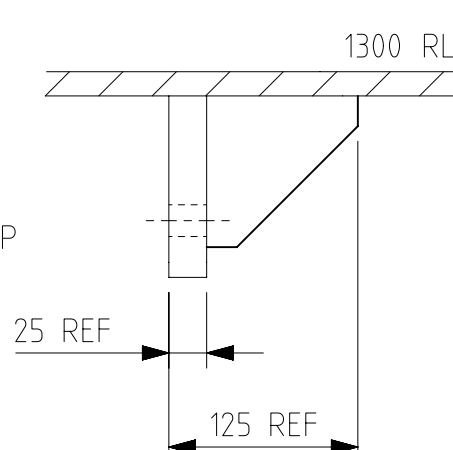
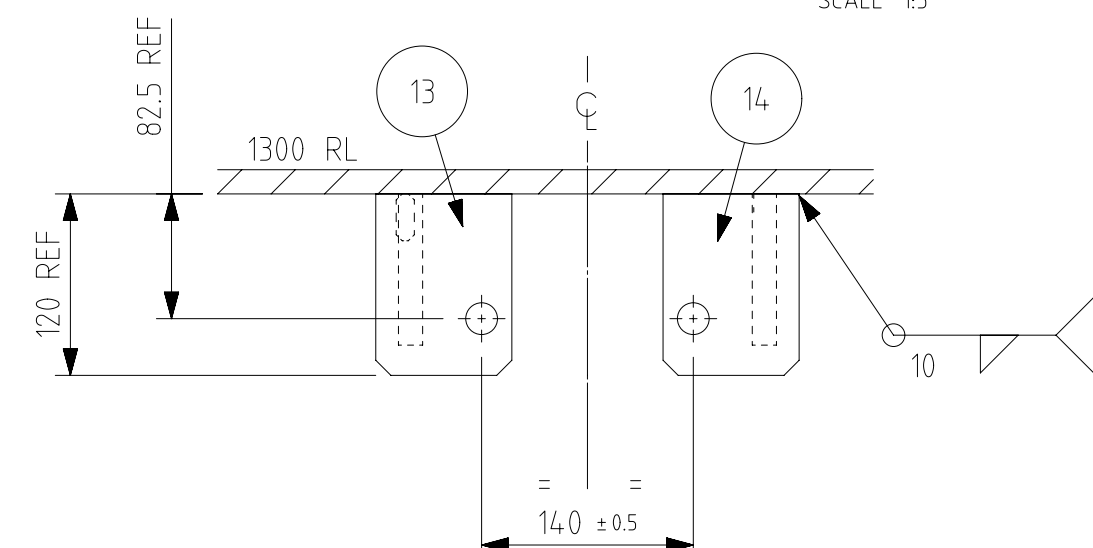
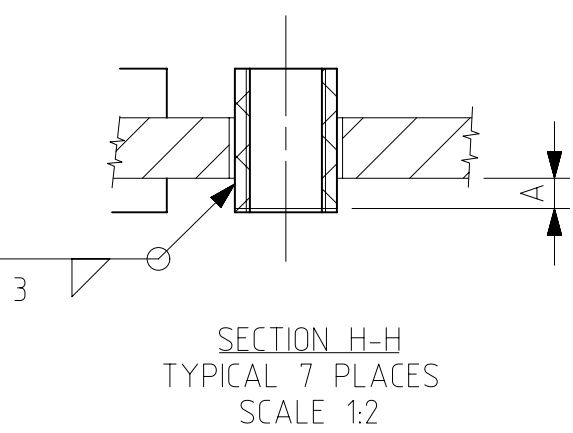
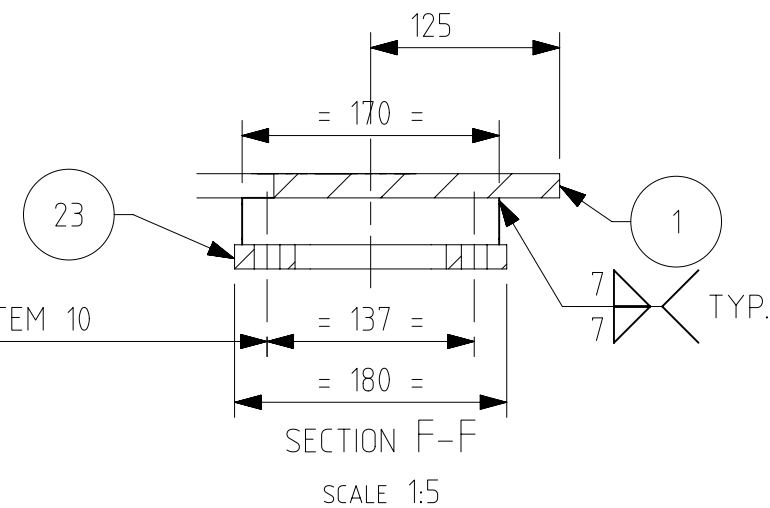
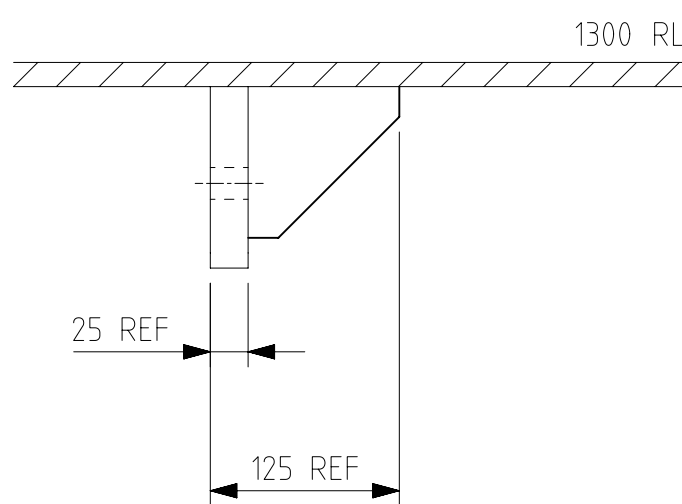
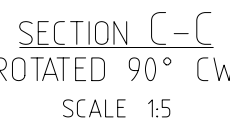
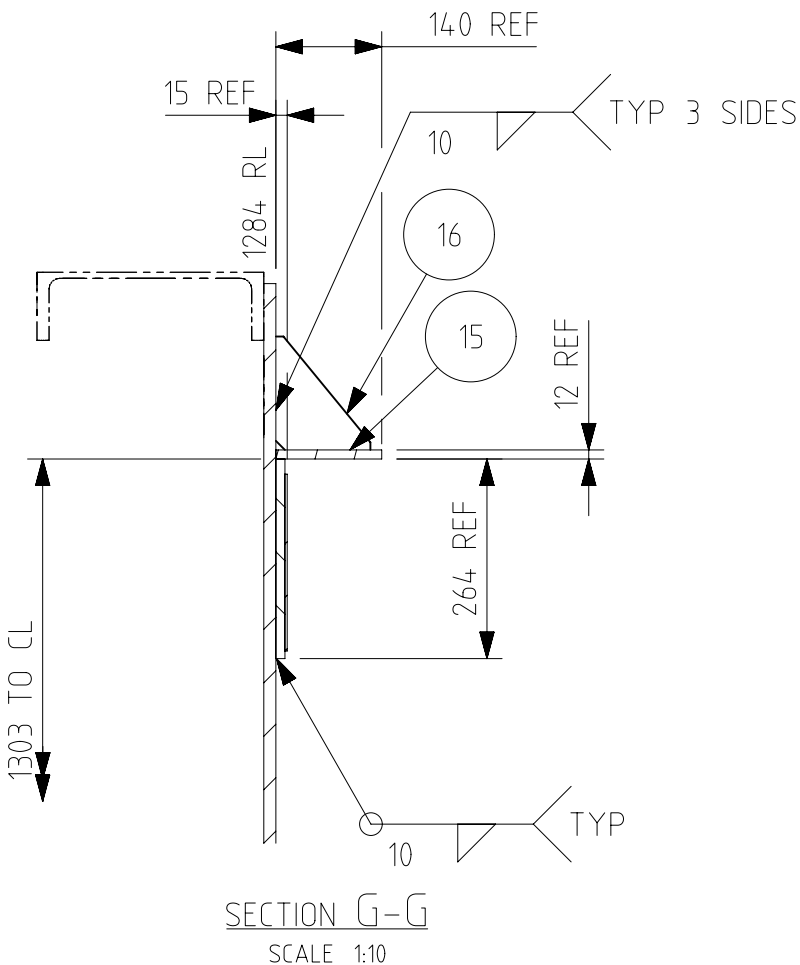



SECTION K-K  
SCALE 1:5

1. ALL DIMENSIONS ARE IN mm
2. C&D NO.: T302/101
3. QTY./LOCQ: 1 NO.
4. NEXT LEVEL ASSEMBLY DRG. NO. 1209-02.126-001
5. USED FOR LOCO- waG-9HC
6. UNSPECIFIED TOLERANCE IN THE DIMENSIONS MENTIONED AT DRAWINGS TO BE FOLLOWED AS PER IS:2102(PART 1):1993-TOLERANCE CLASS-MEDIUM OF TABLE-1



1	23	T302/389	1209-02.426-368	BRACKET ASSLY FOR VERTICAL DAMPER FIXING AT END-1 L.H & END-2 R.H	1			4.10	
	22	C319/	1209-00.340-203	BRACKET ASSEMBLY FOR SHEAVE (HAND BRAKE)	1			12.00	
2	21	T302/097	1209-02.426-067	SPACING RING SECONDARY SPRING - BOGIE	4	STEEL	IS:2062:2011 Gr. E250 CU QUALITY-C, KILLED NORMALIZED	3.50	
	20	T302/133	1209-02.426-158	SOCKET CONDUIT	1	STEEL	ASTM A 179 ANNEALED / IS:1239, Gr. MED	0.21	
	19	T302/132	1209-18.406-233-006	SOCKET MISTEEL BSP THREAD	2	STEEL	ASTM A-108	0.33	
	18	T302/131	1209-18.406-233-004	SOCKET MISTEEL BSP THREAD	1	STEEL	ASTM A-108	0.14	
	17	T302/130	1209-18.406-233-002	SOCKET MISTEEL BSP THREAD	4	STEEL	ASTM A-108	0.06	
	16	T302/129	1209-02.426-035	GUSSET	4	STEEL	IS:2062:2011 GR-E-250 CU QUALITY-C KILLED NORMALIZED	1.0	
	15	T302/125	1209-02.326-032	BRACKET ASSEMBLY (BUMP SHOP)	2			12.1	
	14	T302/123	1209-02.326-274	BRACKET R.H. (DAMPER)	2			2.9	
	13	T302/120	1209-02.326-273	BRACKET L.H. (DAMPER)	2			2.9	
	12	T302/119	1209-02.426-031	LUG	4	STEEL	IS:2062:2011 Gr. E250 CU QUALITY-C, KILLED NORMALIZED	3.8	
	11	T302/118	1209-01212-003	SPRING GUIDE	4	STEEL	DIN 17182 GS-20 MnSiNi	7.4	
	1	10	T302/390	1209-02.426-371	BRACKET ASSLY FOR VERTICAL DAMPER FIXING AT END-2 L.H & END-1 R.H	1			4.10
		9	T302/112	1209-02.326-025	BRACKET ASSLY L.H.(DAMPER)	2			2.9
	8	T302/109	1209-02.326-022	BRACKET R.H. (DAMPER)	2			2.9	
	7	T302/108	1209-02.326-021	LIFTING PAD	2	STEEL	IS:2062:2006 E-40(FE-540)/SAILMA 350 HI	11.3	
	6	T302/107	1209-02.426-020	INNER PLATE (SPRING POCKET)	2	STEEL	IS:2062:2011 Gr. E250 CU QUALITY-C, KILLED NORMALIZED	42.8	
	5	T302/106	1209-02.426-019	TOP PLATE (SPRING POCKET)	2	STEEL	IS:2062:2011 Gr. E250 CU QUALITY-C, KILLED NORMALIZED	84.4	
4	T302/105	1209-02.426-018	GUSSET L.H.(SPRING POCKET)	2	STEEL	IS:2062:2011 Gr. E250 CU QUALITY-C, KILLED NORMALIZED	29.1		
3	T302/104	1209-02.426-017	GUSSET MIDDLE (SPRING POCKET)	2	STEEL	IS:2062:2011 Gr. E250 CU QUALITY-C, KILLED NORMALIZED	29.4		
2	T302/103	1209-02.326-016	GUSSET R.H. (SPRING POCKET)	2	STEEL	IS:2062:2011 Gr. E250 CU QUALITY-C, KILLED NORMALIZED	29.9		
1	T302/102	1209-02.226-015	BOLSTER PLATE (NO.1 END)	1	STEEL	IS:2062:2011 Gr. E250 CU QUALITY-C, KILLED NORMALIZED	147.9		
<div>निर्देश संख्या    लागत एवं मिलान संख्या    अंग आरेखन संख्या    वर्जन    मात्रा    पदार्थ    विविधिति    प्रति मात्र वि. प्र.</div>									
<div>REF. NO.    C&amp;D NO.    PART DRG. NO.    DESCRIPTION    QTY.    MATL    SPECN    WT. EACH IN KG</div>									

चित्ररंजन रेलइंजन कारखाना CHITTARANJAN LOCOMOTIVE WORKS, INDIA			
आदेशिका DCA	जीवा ब्रह्म CHD SSE	ड्राइंग नंबर DWR NUMBER 1209-02.126-003	ड्राइंग शीट DWR SHEET 1 OF 1
परीक्षण चेक REVERSED AEE 1 SSE	सिगनाल SIGNAL PATNA	नाम NAME डी. एच. एन. एस.	प्रो. नं. PRO. NO. 206345
अनुमोदित सचिव APPROVED DYCE	सिगनाल SIGNAL PATNA	स्पेसिफिकेशन SPECIFICATION	बोलस्टर एम्बली BOLSTER ASSEMBLY (NO. 1 END)
दिनांक DATE	20-02-2023	डिस्क्रिप्शन DESCRIPTION	बोलस्टर एम्बली BOLSTER ASSEMBLY (NO. 1 END)
प्रतिक अनुपात SCALE	1:20	ड्राइंग नं. DRAWING NO.	1209-02.126-003
वर्क / REF. IB021-00390	आल्टर- ALT-9	परिवर्तन संख्या ALTERATION NO.	2
ड्राइंग शीट SHEET	1 OF 1	आल्टर- ALT-9	1

NOTE: WELDING SHALL BE IN ACCORDANCE WITH AS1554.1 - 1991 SP./IS:812/IS:814/IS:822

[illegible]

DIMN A=8 (5 PLACES) ITEM 17  
DIMN A=10(1 PLACES) ITEM 18  
DIMN A=20(2 PLACES) ITEM 19