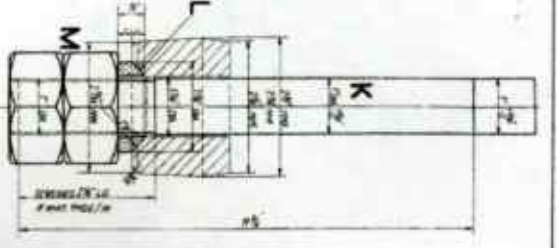
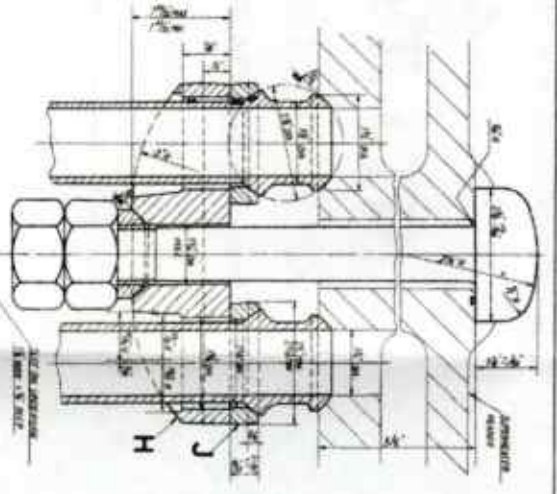
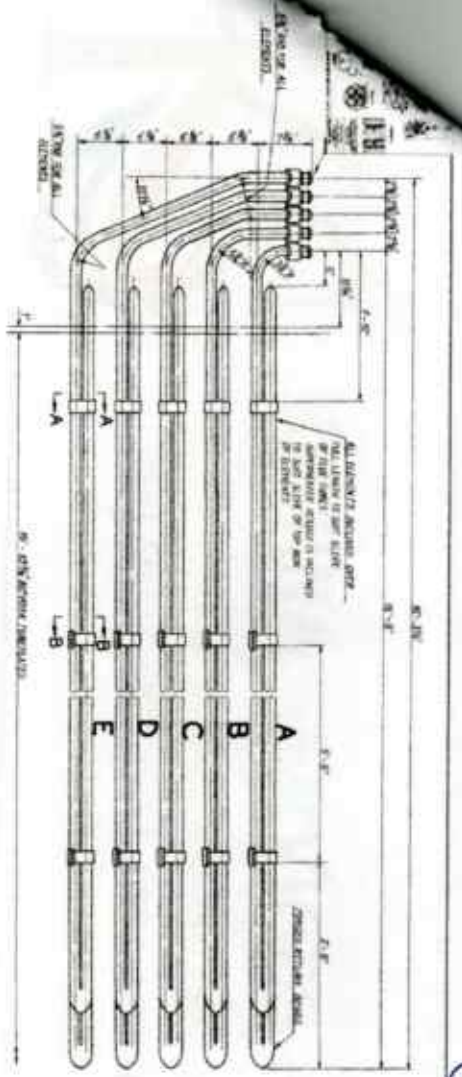
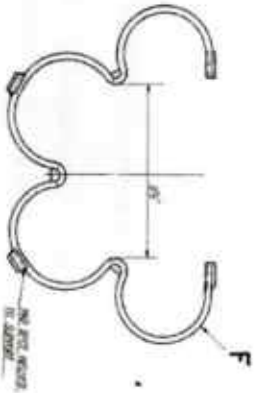


7



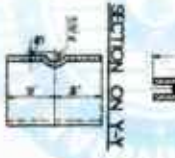
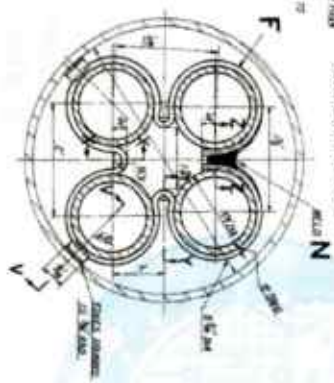
SECTION ON B-B

ALL TUBES TO BE OF STEEL SHEET
STEEL PIPE 20% & 25% OVER
AS SPECIFIED TO BE USED ONLY AS PER LIST
& SPECIFICATIONS FOR THE LENGTHS SPECIFIED
FOR THE TUBES AND SHEET TUBES TO
BE USED AS PER SPECIFICATIONS

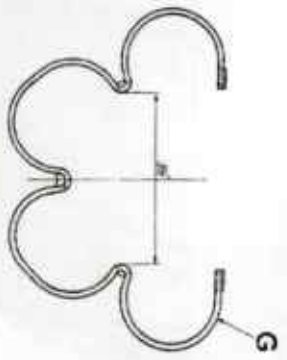
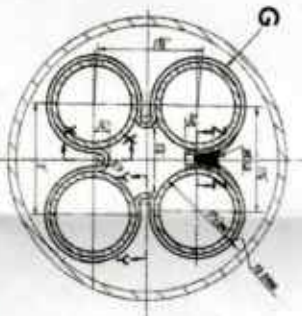


SECTION ON V-V

SECTION ON X-X



SECTION ON A-A



SECTION ON Y-Y

SECTION ON Z-Z

NO.	REMARKS	DATE	BY	CHECKED	APPROVED
1	INDIAN RAILWAY STANDARD				
2	BROAD GAUGE LOCOMOTIVES				
3	WP CLASS 4-6-2 TYPE				
4	SUPERHEATER ELEMENTS				
5	CENTRAL STANDARDS OFFICE				
6	INDIAN RAILWAYS				
7	DRG NO 8WP 46				