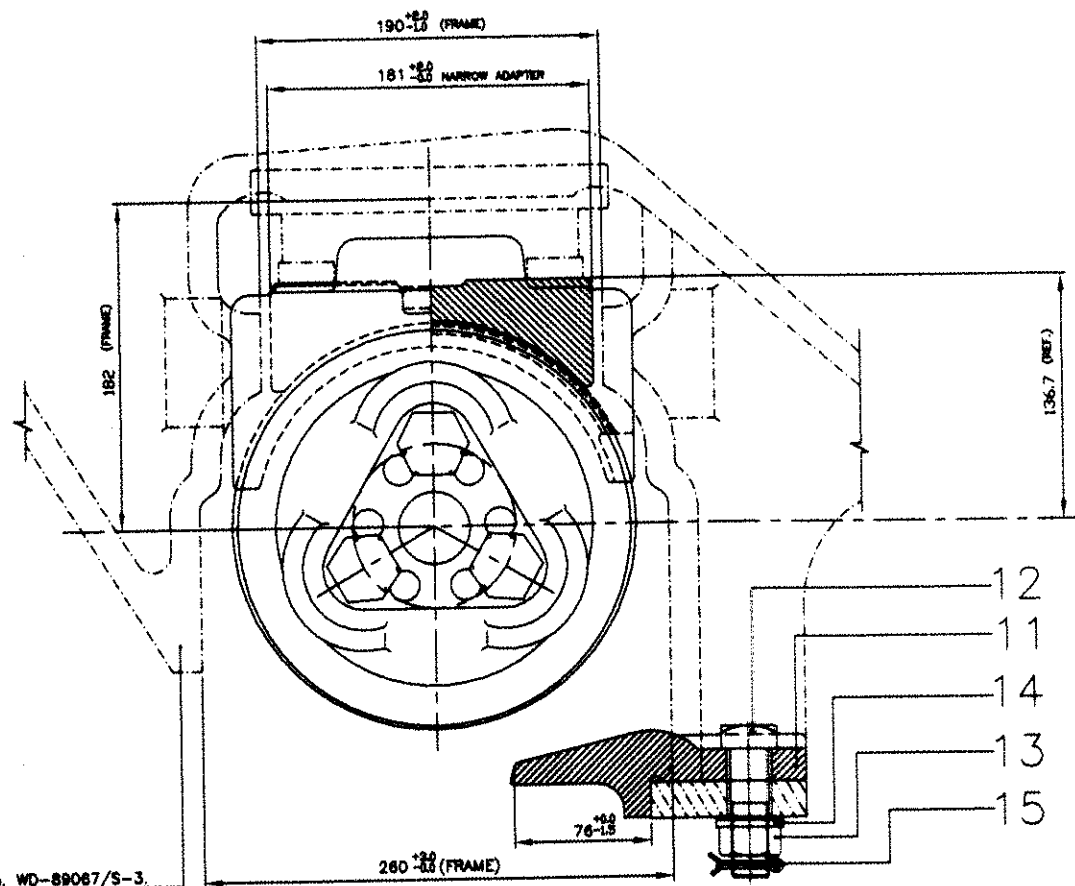


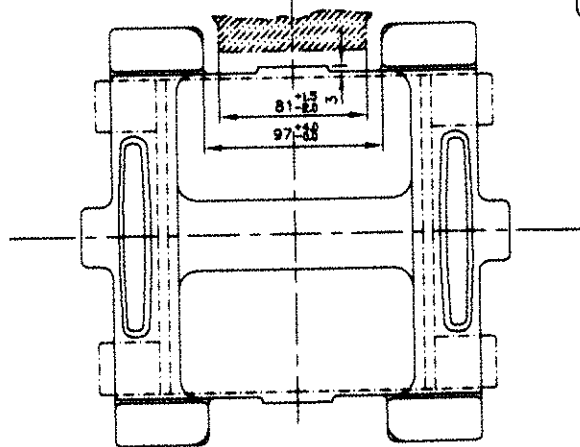
- ① 3 - TAPPED HOLES ON 98.4 P.C.D.
1" - 8 UNC - 2B X 51 DEEP EQUALLY
SPACED FOR AXLE CAP SCREWS SIZE
1" DIA - 8 UNC - 2 A X 2-1/4" LONG.

AXLE TO DRG.No. WD-89025/S-2

BOGIE SIDE FRAME TO DRG.No. WD-89067/S-3.



- NOTE :
1. ALL DIMENSIONS ARE IN MILLIMETRES UNLESS OTHERWISE STATED.
 2. AMOUNT OF GREASE TO BE FILLED AS PER G-81.
 3. GREASE SHALL CONFORM TO SPECIFICATION WD-24-MISC-2003.



15	SPLIT PIN	4	SK-69594 ITEM 9			
14	SPRING WASHER M 20	4	SK-69594 ITEM 9			
13	HEX. NUT M 20 X 2.5	4	SK-69594 ITEM 9			
12	SIDE FRAME KEY BOLT	4	SK-69594 ITEM 9			
11	SIDE FRAME KEY	4	SK-69594 ITEM 6			
10	NARROW JAW ADAPTER	4	WD-89067/S-9			
9	BACKING RING	4	-			
8	LOCKING PLATE	4	WD-87019/S-1			
7	AXLE CAP SCREW (1" DIA - 8 UNC - 2 A X 2-1/4" LONG)	12	-			
6	AXLE END CAP	4	-			
5	GREASE SEAL	8	-			
4	WEAR RING	8	-			
3	SPACER	4	-			
2	CUP	4	-			
1	CONE ASSEMBLY	8	-			
ITEM	DESCRIPTION & DIMENSIONS	QTY	REF. DRGS.	MT. OF ONE (Kg)	MATL. & SPEC.	REMARKS

SUPERSEDED BY

SUPERSEDES DATE

SCALE PASSED - SA -
CHECKED - SA -
DRAWN R.K.GAUR 11/92
TRACED
J.S.NO. WD-92089 11/92

GENERAL ARRANGEMENT
OF CTRB CLASS 'E' 6"X11"
[NARROW JAW]

①	-	WD-13041	NOTE NO. 1,2,3 MODIFIED. Dim. 50.8 & 60 CHANGED TO 51 & 2-1/4" RESPECTIVELY	11/13	-
ALT.	ITEM	AUTHY	DESCRIPTION	DATE	ASSEMBLY DRG.

B.G. R.D.S.O. GROUP
[W]

WD-92089-S-01