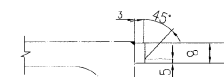
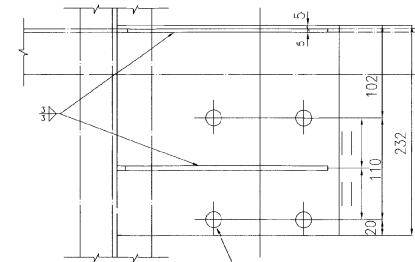


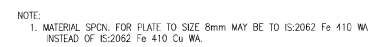
DETAIL AT-'U'



DETAIL AT-'W'



3



ITEM	DESCRIPTION	NO. OF	REF. DRG.	MT OF	MAIL & SPEC.	REMARKS
3	1. SUPPORTING ANGLE FOR AIR RESERVOIR	2		3.43	IS:2062 E250 A	
	2. SUPPORTING BRACKET (ISA 701758)	1				
	3. BRACKET FOR DISTRIBUTOR VALVE	1		5.39	IS: 2062 Fe 410 CU MA	
3	2. AUXILIARY RESERVOIR SUPPORTING BRACKET	3		3.72	" " "	
	1. CROSSBAR & BRACKET FOR UREA CL-INDER	1		38.2	IS: 2062 Fe 410 CU MA	

SUPERSEDED BY		BOGIE OPEN WAGON TYPE 'BOXN/BOXNHS/BOXNHAM/BOXNM1/BOXNM2 AND BOXNHSM1/BOXNHSM2/BOXNXL	
SUPERSEDES		DATE	
SCALE	PASSED	N.P. Gupta	9/83
1.5	CHECKED	M.S.PANCI	3/83
1.2.5	DRAWN	SURESH	3/83
1.1	TRACED	S.PURI	7/93
J.S.NO.			
B.G.		WD-80007-S-16	

UNDER FRAME DETAILS  
(SHEET-3)

WD-80007-S-16