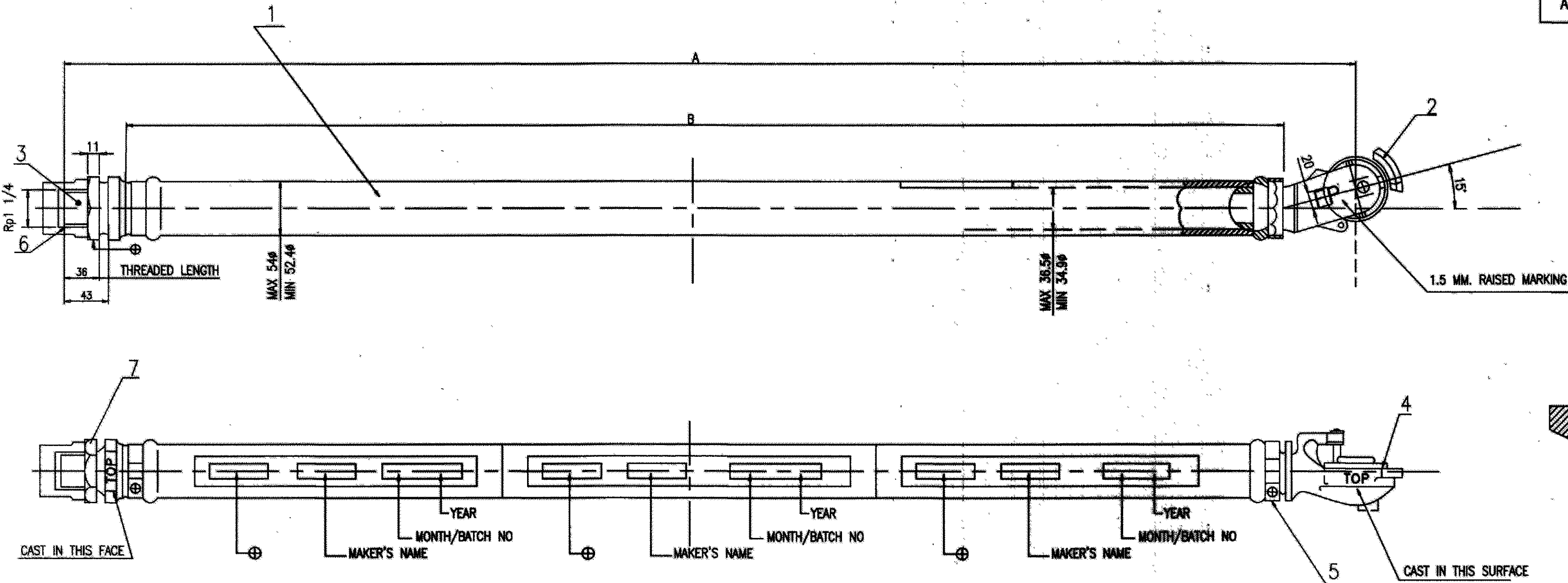


ALL ITEMS TO THIS DRG. SHALL ALSO CONFORM TO LATEST R.D.S.O. SPEC. NO. 02-ABR AND SHALL BE MANUFACTURED BY AND PROCURED FROM R.D.S.O. APPROVED SOURCES ONLY.



NOTE:-

- 1. COUPLING HEAD SHALL BE SIMILAR BUT OF OPPOSITE HAND TO AAR SPECIFICATION S-491-2005.
- 2. WHITE HEART MALLEABLE IRON CASTING TO IS:14329:1995 GR.WM 350 & BLACK HEART MALLEABLE IRON CASTING TO IS:14329:1995 GR. BM 350 ARE PERMISSIBLE ALTERNATIVE MATERIAL FOR COUPLING HEAD AND NIPPLE.
- 3. THREADS SHALL BE PARALLEL TO IS: 554.
- 4. COUPLING HEAD (ITEM-2) AND HOSE NIPPLE (ITEM-3) SHALL BE PAINTED WITH READY MIXED WHITE PAINT TO IS SPECIFICATION-127.
- 5. MOUNTING OF HOSE PIPE ON COUPLING HEAD & NIPPLE SHALL BE IN ACCORDANCE WITH AAR STANDARDS S-437-78 & S-440-7 AND TESTING SHALL BE IN ACCORDANCE WITH AAR STANDARDS S-458-66.
- 6. GAUGING OF COUPLING HEAD AND GASKET SHALL BE IN ACCORDANCE WITH AAR STANDARDS S-456-72 (MODIFIED TO SUIT OPPOSITE HAND WEAR EVER APPLICABLE) & 447-70 RESPECTIVELY.
- 7. THE BEADS & SHANKS OF COUPLING HEAD & NIPPLE SHALL BE GAUGED IN ACCORDANCE WITH AAR STANDARDS S-455-47.
- 8. LENGTH OF NIPPLE ON THE THREADED END & THREADED LENGTH SHALL BE IN ACCORDANCE WITH THOSE INDICATED IN THIS DRAWING.
- 9. REINFORCEMENT OF AT LEAST TWO BRAIDS OF SYNTHETIC FIBRE YARNS INSTEAD OF WRAPPED PLIES OF POLYSTER FABRIC.
- 10. MONOGRAM SHALL BE MARKED SHOWN THUS ⊕

TYPE OF STOCK	A	B
FREIGHT STOCK		
ICF COACHES	790 ± 6 mm	660 ± 6 mm
LHB COACHES		
BCACSM		
i) A CAR (B-END)	655 ± 6 mm	525 ± 6 mm
ii) B CAR		

14	-	WD-2004	HOSE LENGTH OF LHB COACHES REVISED, DRAWING REVISION & NOTE NO 1 & 2 REVISED	10/20	
13	-	WD-1998	HOSE LENGTH OF BCACSM REVISED	10/19	
12	-	WD-1998	HOSE LENGTH OF BCACSM ADDED	10/18	
11	-	WD-1403	HOSE LENGTH OF LHB COACHES ADDED	12/14	
10	-	WD-0200	REVISED	1/2002	
-	-	-	RETRACTED	10/2001	
9	-	WD-0100	NOTE 4 REVISED	10/01	
8	-	WD-0013	MAT. FOR HOSE CLAMP REVISED	03/99	
7	-	WD-0100	M.G. ADDED IN TITLE COLUMN	12/81	
6	-	WD-0003	AAR STANDARDS S-406-47 WAS S-455-77	7/89	
5	1	WD-0010	NOTE 10 ADDED AND ALTERNATE SPEC. DELETED	2/89	
4	1	WD-0012	ALTERNATE SPEC. ADDED	12/88	
3	-	WD-0007	DIMENSION 11 WAS 13	10/86	
2	-	WD-0302	REVISED	06/84	
1	-	WD-0200	REVISED	02/82	
ALT	ITEM	AUTHY	DESCRIPTION	DATE	ASSY. DRG.

7	HEX PIPE NUT Rp 1 1/4	1			STEEL S.S.304	-
6	THRED PROTECTION CAP	1			PLASTIC	-
5	HOSE CLAMP	2			STEEL S.S.304	-
4	GASKET	1			AW-0-02-03	-
3	HOSE NIPPLE	1			AW-0-02-74	SEE NOTE 2 & 8
2	COUPLING HEAD-PIN TYPE	1			-	SEE NOTE 1 & 2
1	HOSE PIPE	1			RUBBER AW-0-02-74	SEE NOTE 9
ITEM	DESCRIPTION	NO. OF	REF. DRG.	BY (DATE)	MATERIAL & SPEC. REMARKS	

SUPERSEDED BY				FOR AIR BRAKE ON WAGONS			
SCALE		PASSED	T.RAGHU	DATE	3/81		
/	CHECKED	SHERA	3/81	<div style="text-align: center;"> <h1>AIR BRAKE HOSE COUPLING FOR FEED PIPE</h1> </div>			
	DRAWN	S.K.G	3/81				
	TRACED	S.PURI	10/2001				
	J.SHEET						
B.G.		R.D.S.O. GROUP		WD-81027-S-01			
[W]							

COMP. BY	SIG.	DATE
M.L.BAHL	Sd-/	10/2001