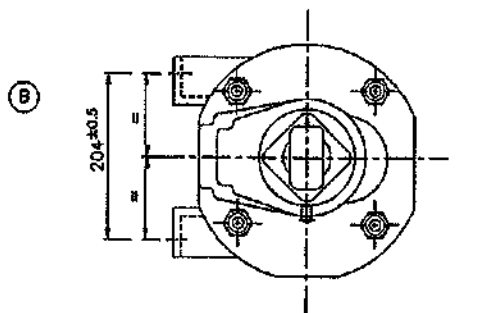
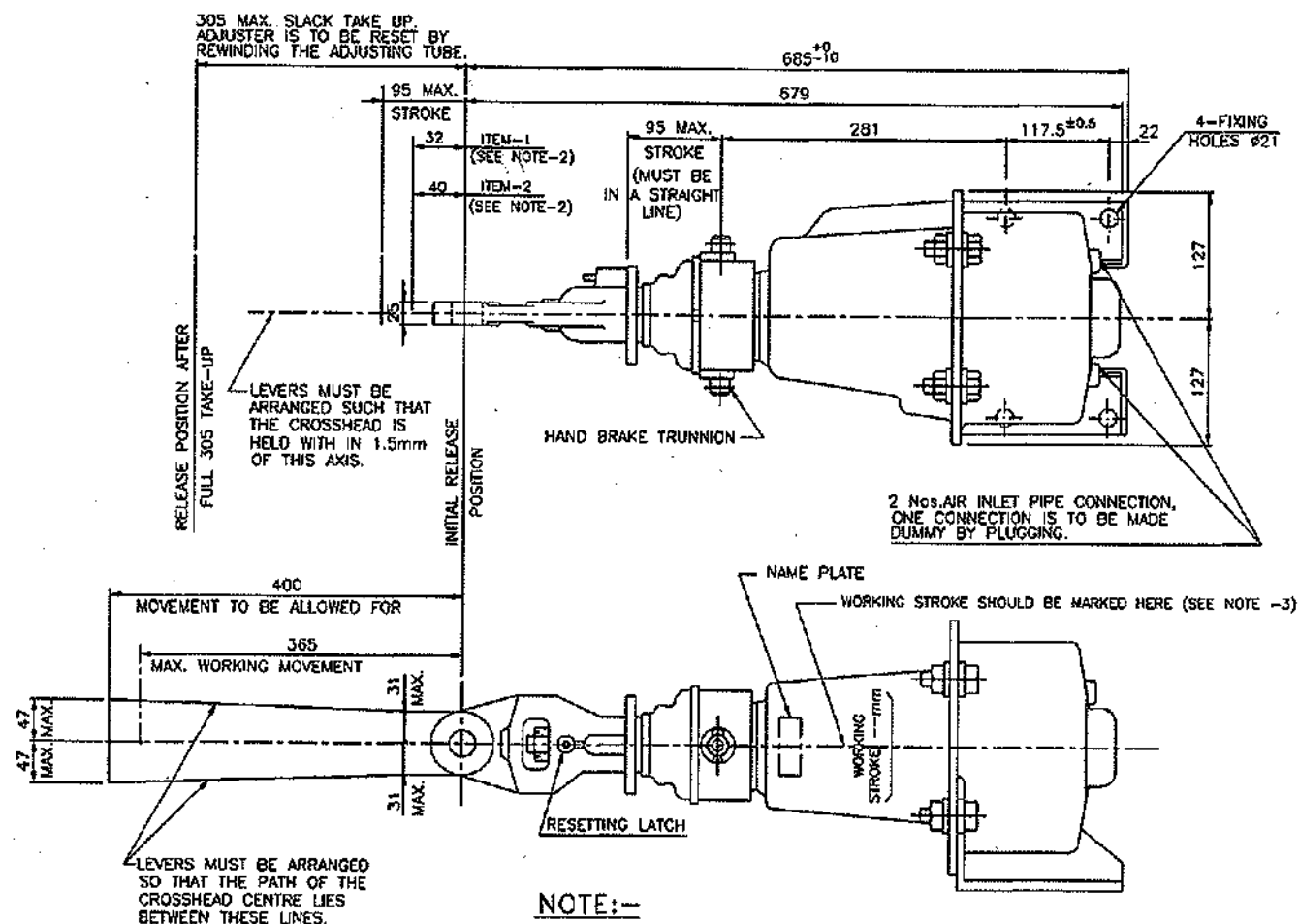


POSITION (A) FOR MAIN LINE SELF GENERATING AND BG EMU TRAILOR COACHES (NON HCC BOGIE)

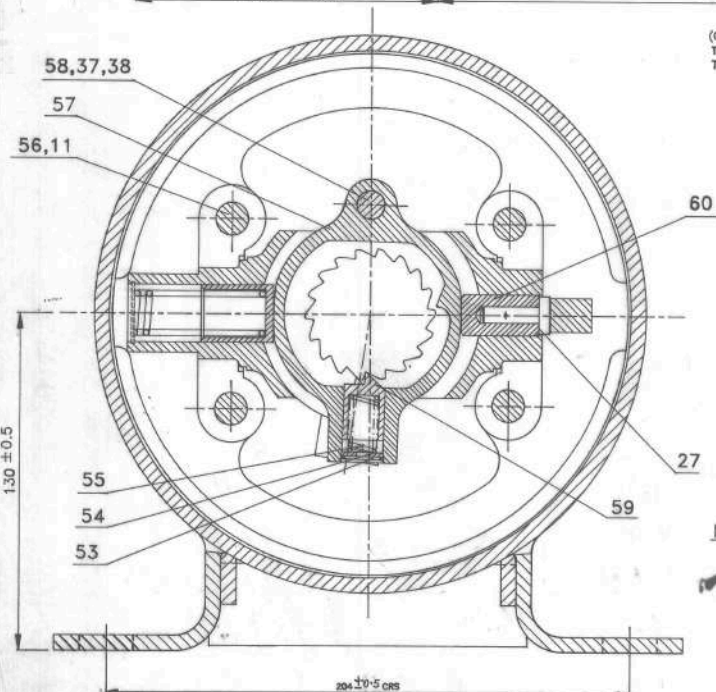
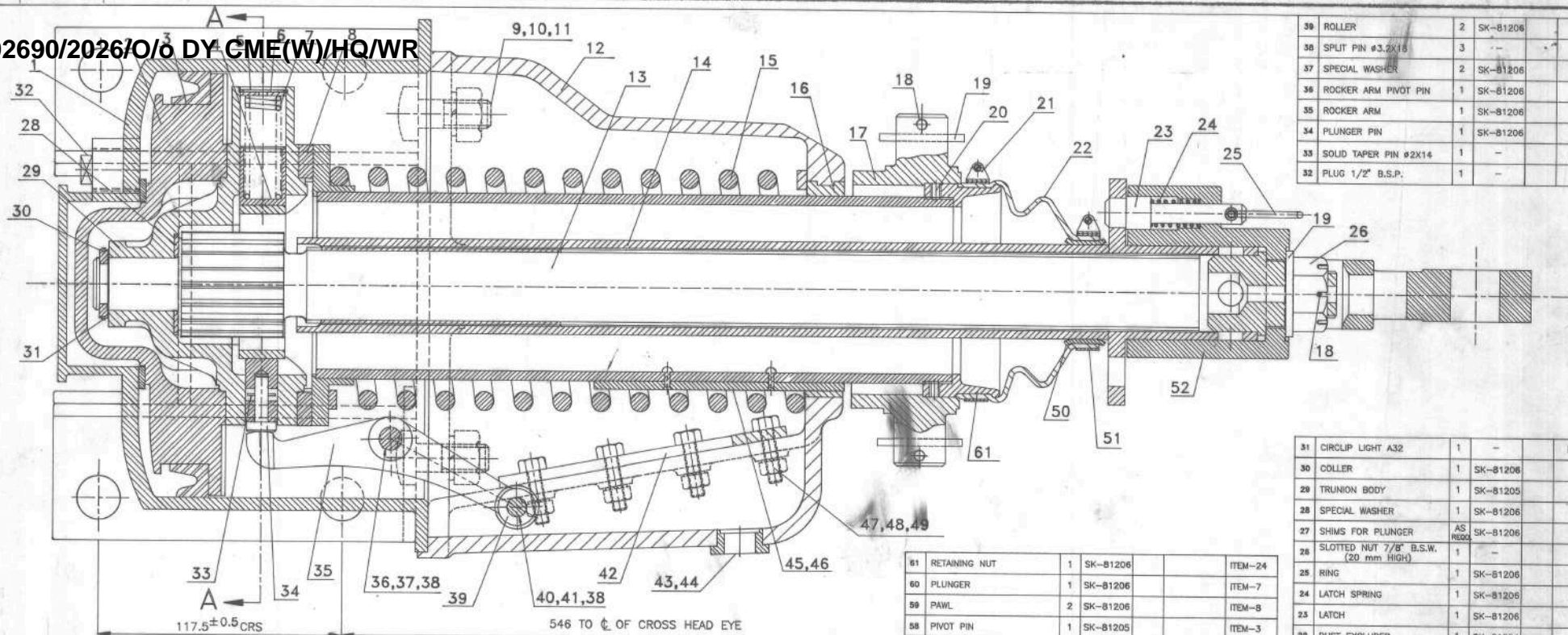


POSITION (B) FOR EMU MOTOR COACHES TRAILER COACHES WITH HCC BOGIE



1. TO MANUFACTURE BOGIE MOUNTED BRAKE CYLINDER FOR MAIN LINE COACHES. REFER RDSO SK-81200 AND THE BILL OF MATERIAL FOR DIFFERENT COMPONENTS.
 2. ITEM-1 (WORKING STROKE-32mm) FOR SELF GENERATING MAIN LINE COACHES AND DEMU TC.
 3. ITEM-2 (WORKING STROKE-40mm) FOR EMU TRAILER (HCC/NON HCC), MOTOR COACHES, MEMU (DMC & TC), DEMU (DPC) AND MAINLINE GS & SLR COACHES.
- WORKING STROKE OF BRAKE CYLINDER (32 OR 40mm) SHOULD BE CAST IN RAISED LETTER BY 1.5 mm HEIGHT ON DOME COVER LETTER SIZE SHALL BE 10mm

11	-	E&S AND DRAWS/03/15	DRAWING CORRECTED	12/15	RDSO/SK-81200	SUPERSEDED BY:	INDIAN RAILWAY STANDARDS
10	-	E&S AND DRAWS/02/15	ITEM-2 IN NOTE NO. 2 IS MODIFIED	11/15	ASSEMBLY DRAWINGS	SUPERSEDES:	EMU, MEMU & DEMU STOCK AND SELF GENERATING MAIN LINE COACHES
9	-	SS/05/03	STROKE 60mm & ITEM-2 OF NOTE-2 DELETED. ITEM -3 MODIFIED & RENUMBERED AS ITEM-2 "NON HCC BOGIE" & TRAILER COACHES "WITH HCC BOGIE" IN POSITION A & B ADDED RESPECTIVELY. NOTE NO. 3 ADDED.	03/05	REFERENCE :-	SCALE P 1:1 C 2:1 D J.S. E&S AND DRAWS/03/15	203.2 mm x 95.25 mm (8" x 3 3/4") BRAKE CYLINDER WITH SLACK ADJUSTER
8	-	SS/02/05	REVISED AND REDRAWN	02/05	FLOPPY No. ----	R.D.S.O. [CG]	SKETCH-81057
ALT	ITEM	AUTHY.	DESCRIPTION	DATE			



SECTION A-A (FULL CROSSSECTION OF CYLINDER SHOWN)

(CROSSSECTION SHOWN IN HORIZONTAL PLANE TO SHOW THE LOCATION OF ROCKER ARM AND BUSH/FILTER ON THE SIDE OF CYLINDER.)

NOTE:-

- ITEM-17 WITH WASHER AND SPLIT PIN TO BE USED WHEN HAND BRAKE IS NEEDED.
- BRAKE CYLINDER SHOULD BE LEAK PROOF WITH TESTING AIR PRESSURE 7 kg/sq.cm.
- REFER ROSO SK-81057 FOR OTHER WORKING PARAMETERS.

ITEM	DESCRIPTION & DIMENSIONS	No. OF	REF. DRG.	WT. OF ONE kg	MTL. & SPEC.	REMARKS
51	RETAINING NUT	1	SK-81206			ITEM-24
60	PLUNGER	1	SK-81206			ITEM-7
59	PAWL	2	SK-81206			ITEM-8
58	PIVOT PIN	1	SK-81205			ITEM-3
57	PAWL HOUSING RING	1	SK-81206			ITEM-6
56	ALLEN SCREW 1/2" BSPX27/8" TD.LENGTH	4	-			GALV.
55	PAWL SPRING	2	SK-81206			ITEM-19
54	SPECIAL WASHER	2	SK-81206			ITEM-13
53	CIRCLIP LIGHT B16	2	-		IS:3075	GALV.
52	CROSS HEAD	1	SK-81203			ITEM-2
51	JUBILEE CLIP SIZE 2	1	-			GALV.
50	BUSH	1	SK-81206			ITEM-17
49	SPRING WASHER M6 TYPE A	8	-		IS:3063	GALV.
48	HEX. NUT M6	8	-		IS:1363	GALV.
47	HEX. HD. BOLT M6X25	8	-		IS:1363	GALV.
46	SNAP HD. RIVET #2.5X8	2	-		IS:2195	GALV.
45	GUIDE BAR	1	SK-81204			ITEM-3
44	FILTER	1	SK-81202			ITEM-4
43	BUSH	1	SK-81202			ITEM-3
42	ROLLER PLATE	1	SK-81201			ITEM-2
41	WASHER	1	SK-81206			ITEM-22
40	ROCKER ARM ROLLER PIN	1	SK-81206			ITEM-9

5	-	55/10/2002	ITEM NO.-22 CORRECTED.	5/02	
4	-	CD/8/2000	VIEW OF BRAKE CYLINDER CORRECTED ALTERNATIVE SIZE FOR ITEM 9 GIVEN AND DIMENSION 130 CHANGED TO 130±0.5mm	11/2000	
3	-	CD/3/99	TOLERANCES ADDED ON DIMENSION 204 CRS ± 0.5	8/99	
2	-	CD/35/98	TITLE CHANGED.	12/98	
1	-	CD/24/98	VIEW CORRECTED.	8/98	

39	ROLLER	2	SK-81206			ITEM-13
38	SPLIT PIN #3.2X16	3	-		IS:549	GALV.
37	SPECIAL WASHER	2	SK-81206			ITEM-13
36	ROCKER ARM PIVOT PIN	1	SK-81206			ITEM-10
35	ROCKER ARM	1	SK-81206			ITEM-1
34	PLUNGER PIN	1	SK-81206			ITEM-11
33	SOLID TAPER PIN #2X14	1	-		IS:2393	GALV.
32	PLUG 1/2" B.S.P.	1	-			GALV.

31	CIRCLIP LIGHT A32	1	-		IS:3075	GALV.
30	COLLER	1	SK-81206			ITEM-4
29	TRUNION BODY	1	SK-81205			ITEM-1
28	SPECIAL WASHER	1	SK-81206			ITEM-12
27	SHIMS FOR PLUNGER	AS REQD.	SK-81206			ITEM-16
26	SLOTTED NUT 7/8" B.S.W. (20 mm HIGH)	1	-			GALV.
25	RING	1	SK-81206			ITEM-23
24	LATCH SPRING	1	SK-81206			ITEM-21
23	LATCH	1	SK-81206			ITEM-3
22	DUST EXCLUDER	1	SK-81204			ITEM-5
21	JUBILEE CLIP SIZE-5	1	-			GALV.
20	SLOTTED HD. CRUB SCREW 1/2" M20X6	2	-		IS:2388	GALV.
19	WASHER M22 TYPE-C	3	-		IS:2016	GALV.
18	SPLIT PIN #5X40	3	-		IS:549	GALV.
17	HAND BRAKE TRUNION	1	SK-81205			ITEM-2
16	GUIDE BUSH	1	SK-81202			ITEM-2
15	RELEASE SPRING	1	SK-81206			ITEM-20
14	ADJUSTING TUBE	1	SK-81204			ITEM-8, 7 & 8
13	BATCHET WITH ADJUSTING SCREW	1	SK-81204			ITEM-9
12	DOME COVER	1	SK-81202			ITEM-1
11	SPRING WASHER M12 TYPE A	8	-		IS:3063	GALV.
10	HEX. HD. NUT M12	4	-		IS:1363	GALV.
9	TEE BOLT M12X35 ALTERNATIVELY M12X45	4	-			GALV.
8	PISTON TRUNK	1	SK-81204			ITEM-1&2
7	PLUNGER SPRING	1	SK-81206			ITEM-18
6	SPECIAL WASHER	1	SK-81206			ITEM-14
5	CIRCLIP LIGHT B22	1	-		IS:3075	GALV.
4	PLUNGER	1	SK-81206			ITEM-2
3	PISTON PACKING	1	SK-81204			ITEM-10
2	PISTON	1	SK-81203			ITEM-1
1	CYLINDER BODY	1	SK-81201			ITEM 1, 3, 4 & 5

ITEM DESCRIPTION & DIMENSIONS No. OF REF. DRG. WT. OF ONE kg. MTL. & SPEC. REMARKS

SUPERSEDED BY: INDIAN RAILWAY STANDARDS

SCALE: 1:1

DATE: 11/2000

GROUP: 01

203mm AIR BRAKE CYLINDER (WITH SLACK ADJUSTER)

B.G. R.D.S.O. (c) SKETCH-81200