

GROUND FLOOR PLAN

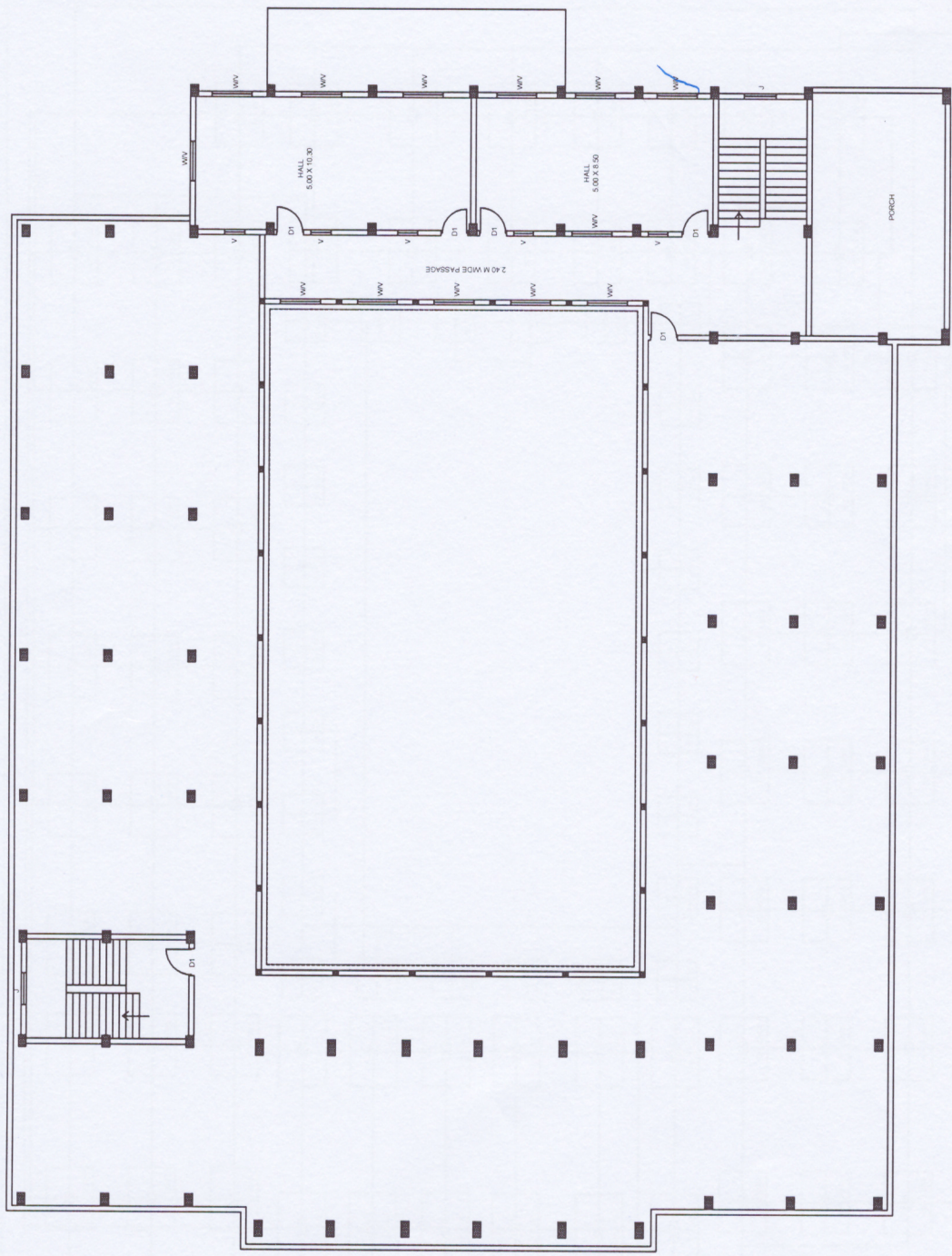
S. No.	DESCRIPTION	Nos.	WIDTH	HEIGHT
1	DOOR-D1	8	1.20	2.10
2	DOOR-D2	22	1.00	2.10
3	DOOR-D3	19	0.80	2.10
4	WINDOW-W	29	1.50	1.30
5	VENTILATOR-V	42	0.75	0.45
6	JALI-J	2	1.20	1.30
7	CHARRED GATE-CG	1	2.40	2.30
8	DRILL GATE-DG	1	1.50	2.10

[Signature]

SUB ENGINEER
RURAL ENGINEERING SERVICE
SUB DIVISION - AMBIKAPUR


[Signature]
Sub Divisional Officer
RURAL ENGINEERING SERVICE
SUB DIVISION - AMBIKAPUR
Sub Dn No-1 Ambikapur

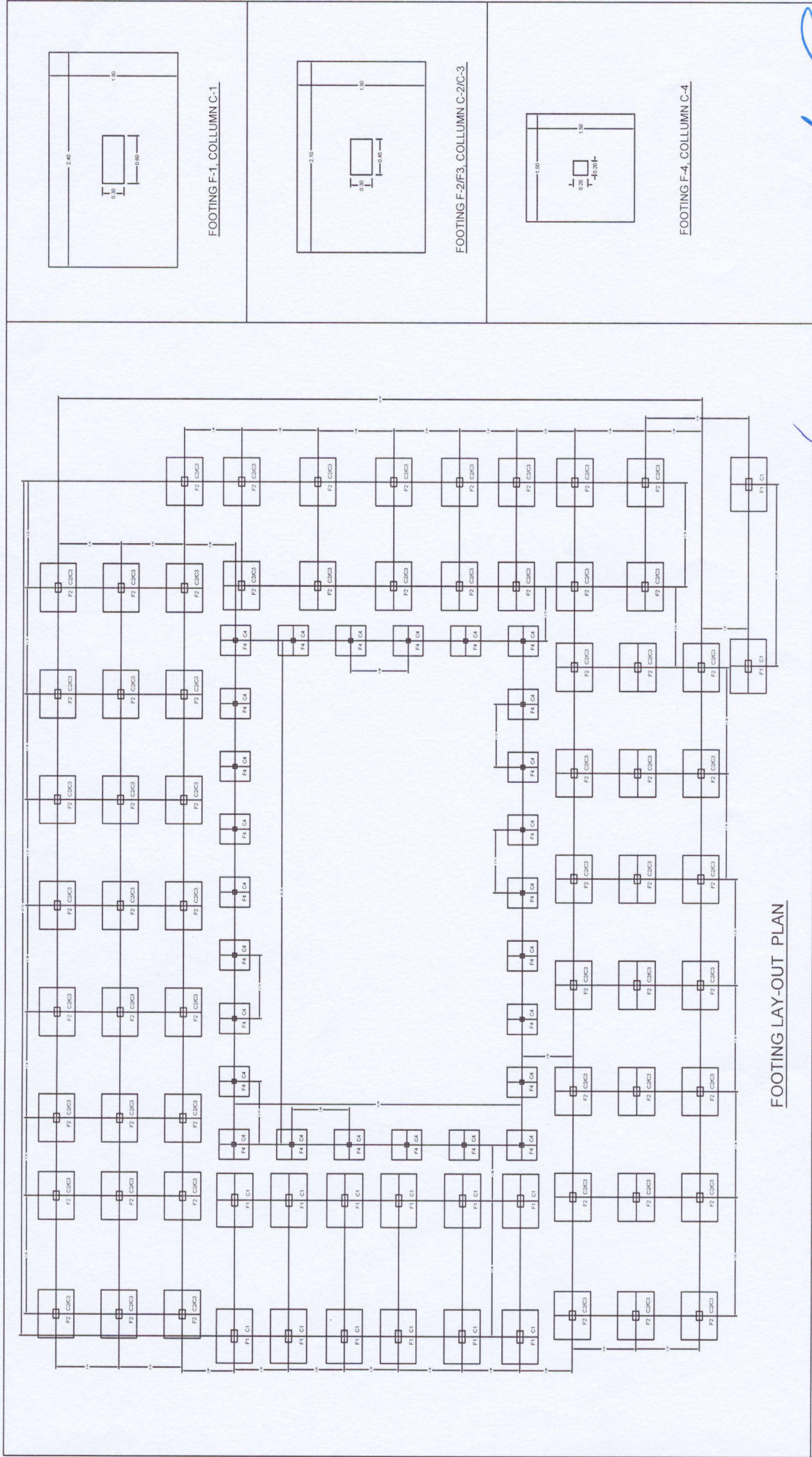
[Signature]
EXECUTIVE ENGINEER
RURAL ENGINEERING SERVICE
DIVISION - AMBIKAPUR



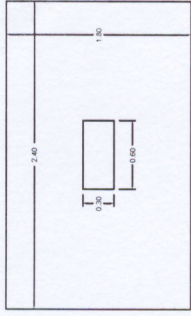
FIRST FLOOR PLAN

FABRICATION DETAIL					
S.N.	DESCRIPTION	QTY	UNIT	WIDTH	HEIGHT
1	DOOR D1	4		1.00	2.10
2	WINDOW W1	13		1.50	1.30
3	WINDOW W2	18		0.75	0.60
4	WALL - J	2		1.20	1.30

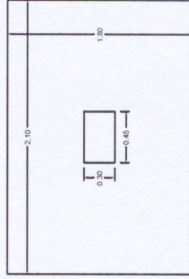

 Sub Divisional Officer,
 Rural Engineering Service
 Sub Division, Ambikapur
 Sub Dn No-1 Ambikapur, E.S. Dn, Ambikapur



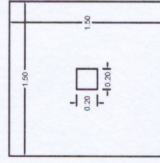
FOOTING LAY-OUT PLAN



FOOTING F-1, COLUMN C-1



FOOTING F-2/F3, COLUMN C-2/C-3



FOOTING F-4, COLUMN C-4

S.No	DESCRIPTION	NO.	LENGTH	WIDTH	DEPTH
1	F-1/FOOT C-1	14	2.40	1.30	1.30
2	F-2/FOOT C-2	60	2.10	1.30	1.30
3	F-4/FOOT C-4	36	1.30	1.30	1.30

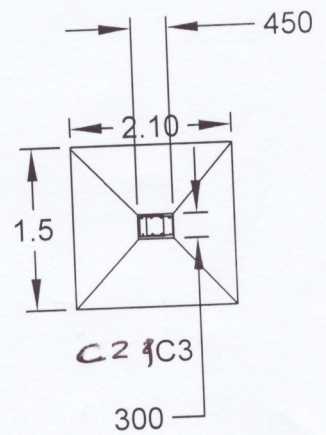
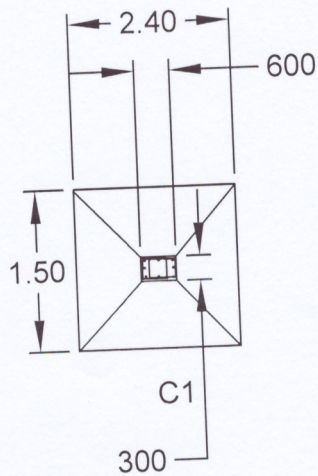
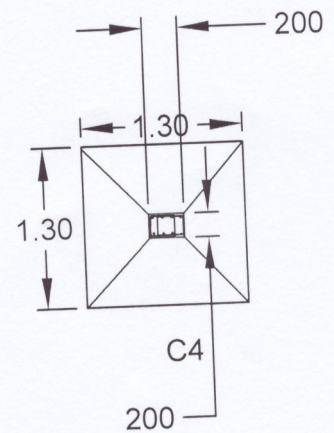
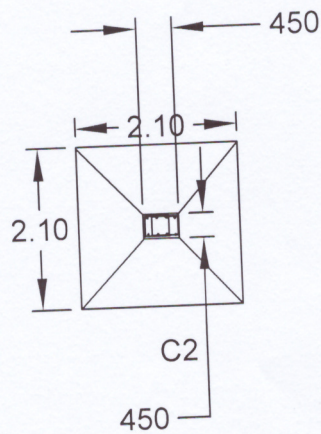
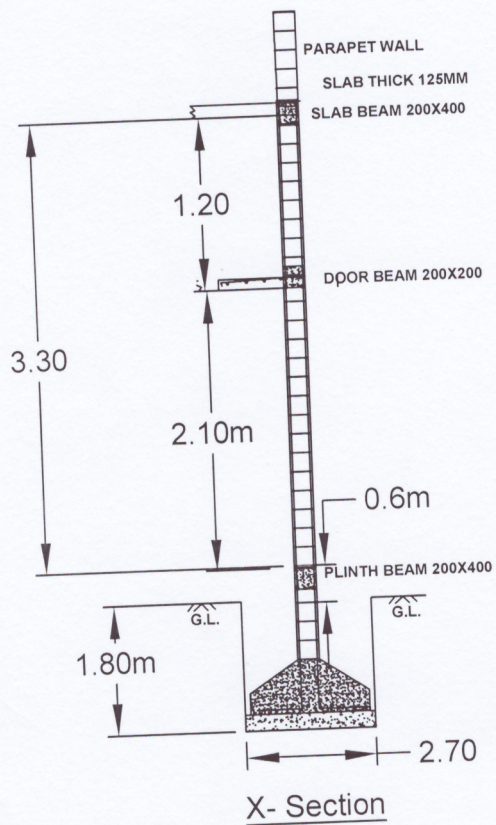
S.No	DESCRIPTION	NO.	LENGTH	WIDTH	DEPTH
1	F-1/FOOT C-1	14	1.30	1.30	1.30
2	F-2/FOOT C-2	60	1.30	1.30	1.30
3	F-4/FOOT C-4	36	1.30	1.30	1.30

[Signature]
SUB-DIVISIONAL OFFICER
RURAL ENGINEERING SERVICE
SUB-DIVISION - AMBAPUR

[Signature]
SUB-ENGINEER
RURAL ENGINEERING SERVICE
SUB-DIVISION - AMBAPUR

[Signature]
EXECUTIVE ENGINEER
RURAL ENGINEERING SERVICE
DIVISION - AMBAPUR

PLAN OF COLUMN FOOTING 50 seater



PLAN OF COLUMN FOOTING

[Signature]
Sub Engineer
R.E.S Sub Dn. Udaipur

[Signature]
Executive Engineer
Rural Engineering Services
Division- Ambikapur (C.G.)

[Signature]
Sub Divisional Officer
Rural Engineering Services
Sub Dn No -1 Ambikapur